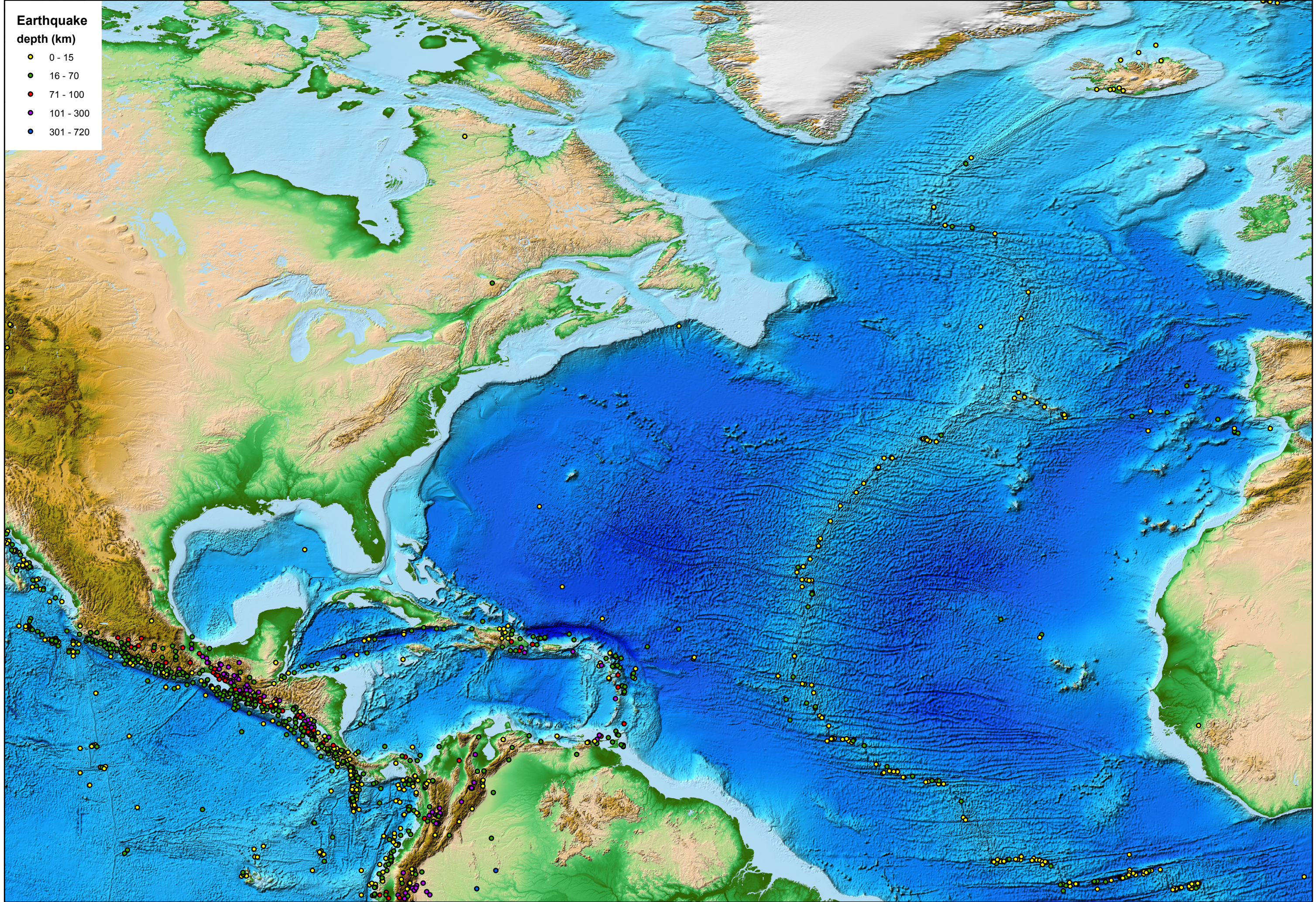


0 750 1,500 3,000 4,500 6,000 Kilometers

Atlantic Group

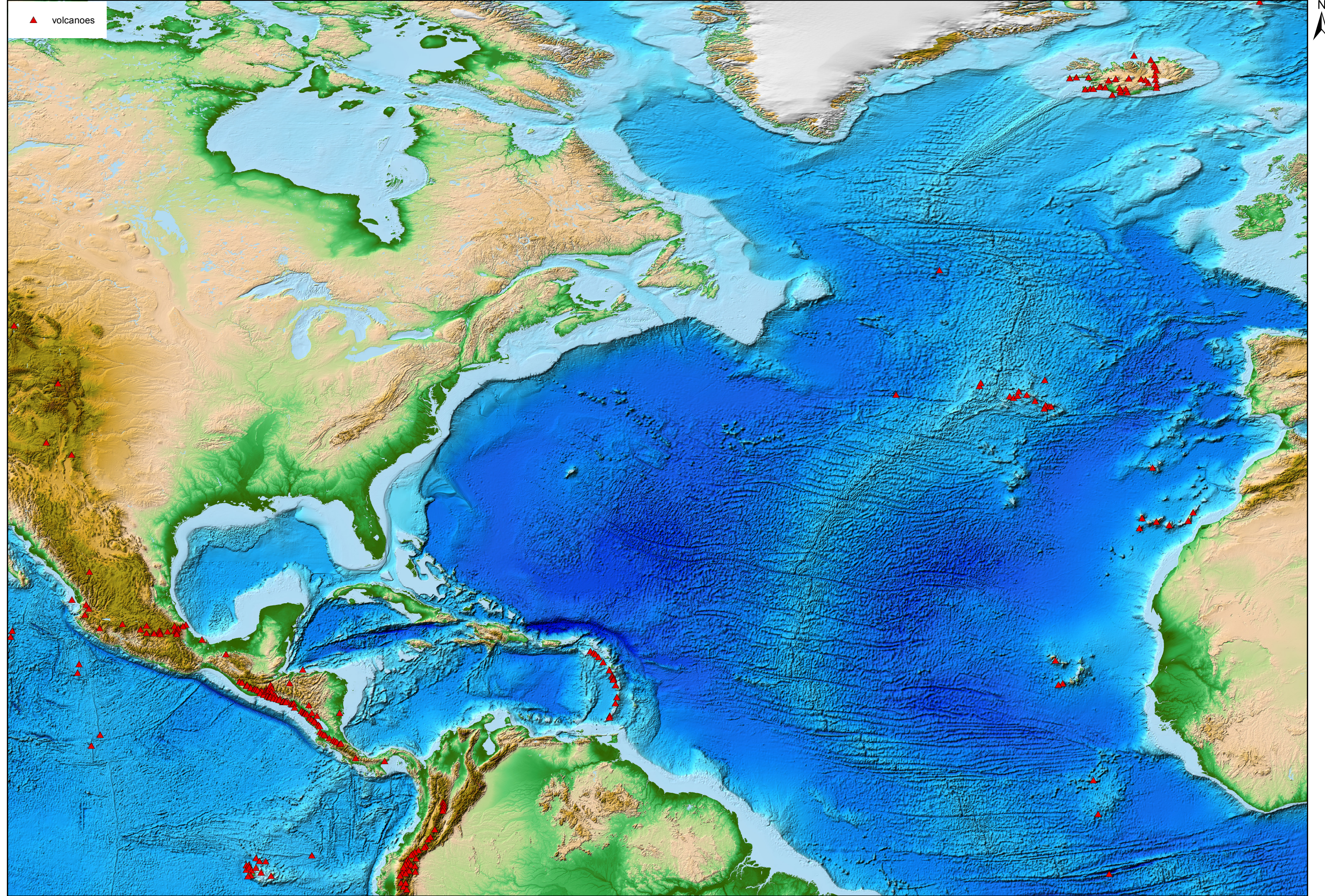
Earthquake depth (km)

- 0 - 15
- 16 - 70
- 71 - 100
- 101 - 300
- 301 - 720



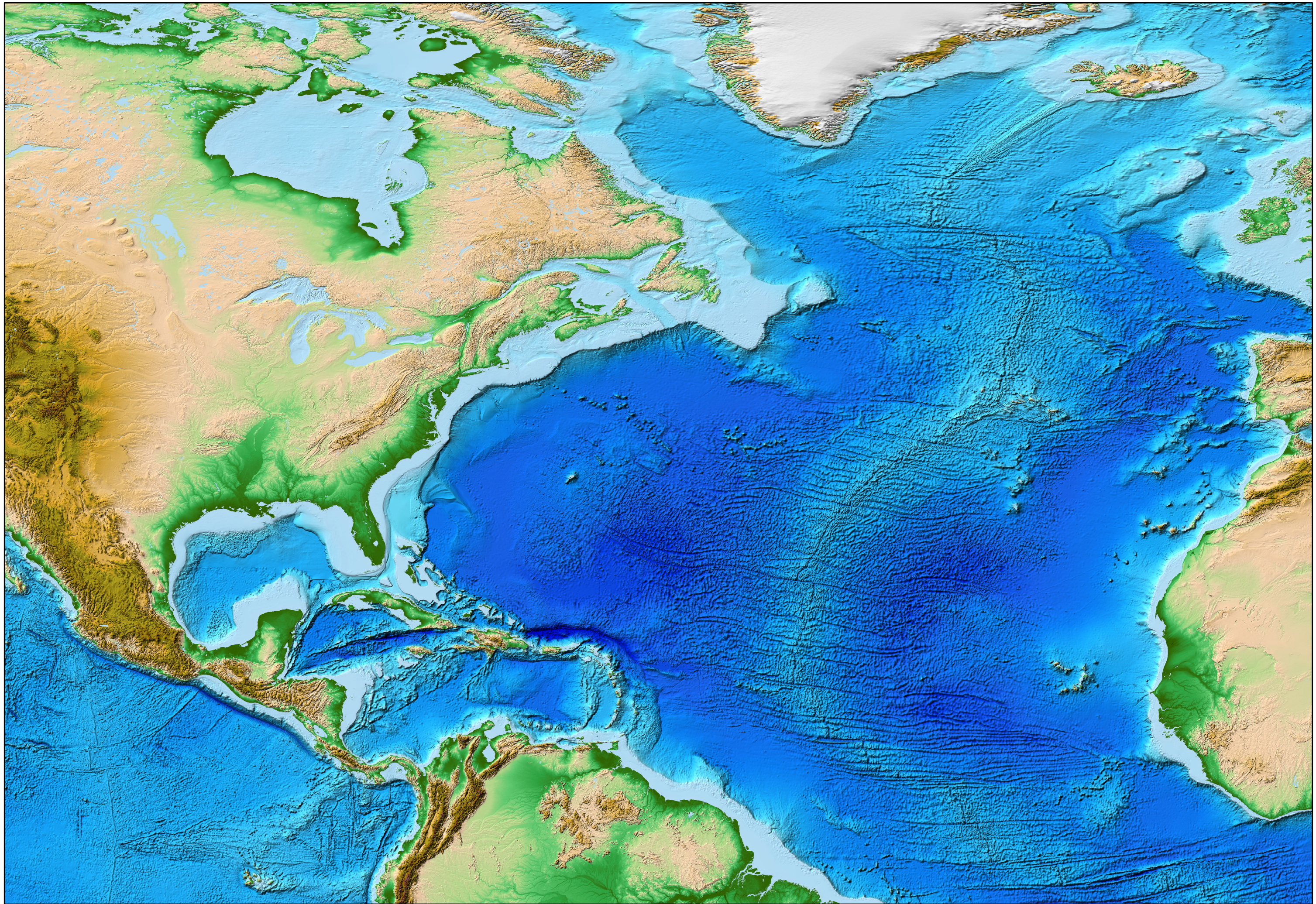
0 750 1,500 3,000 4,500 6,000 Kilometers

Atlantic Group



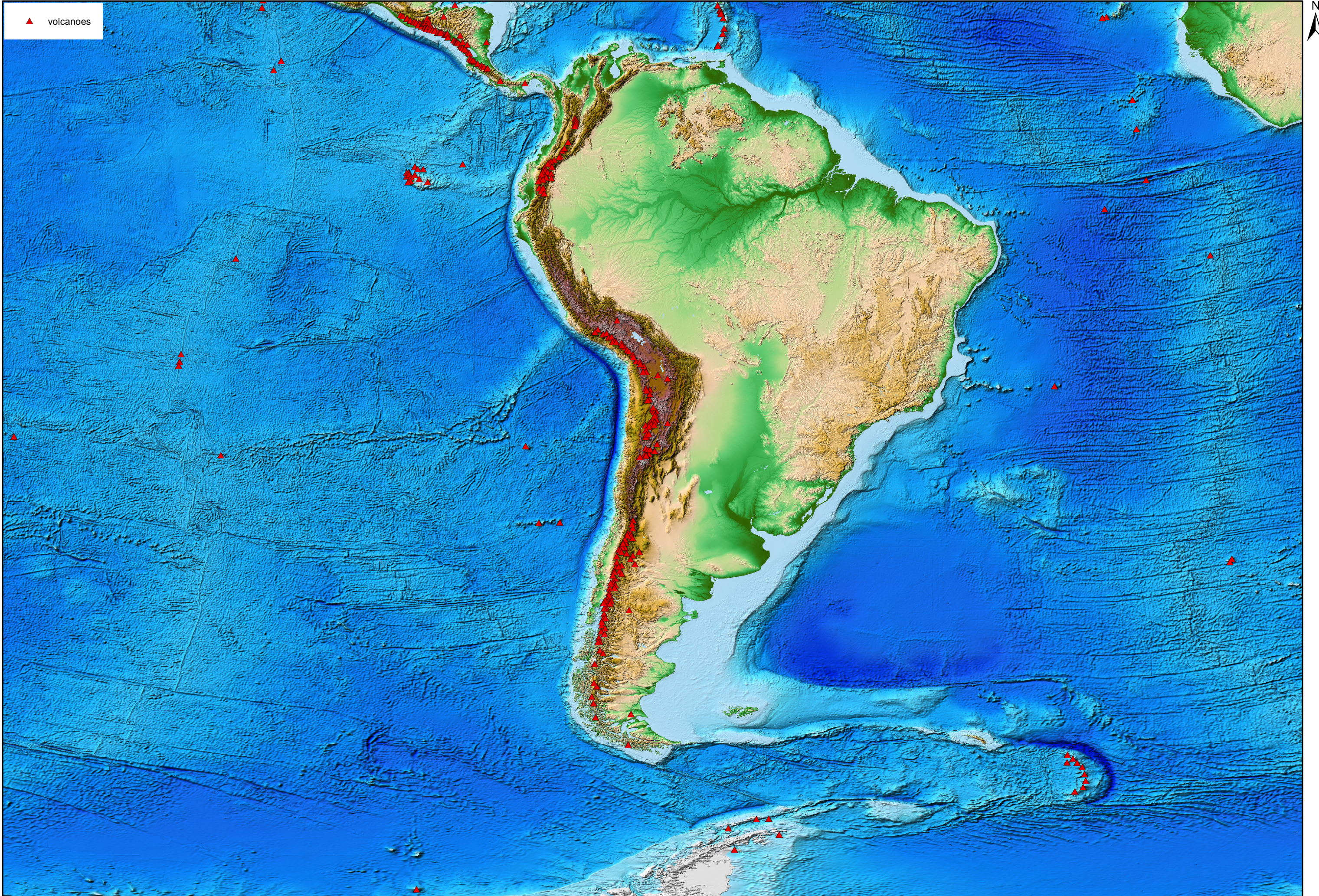
0 750 1,500 3,000 4,500 6,000 Kilometers

Atlantic Group



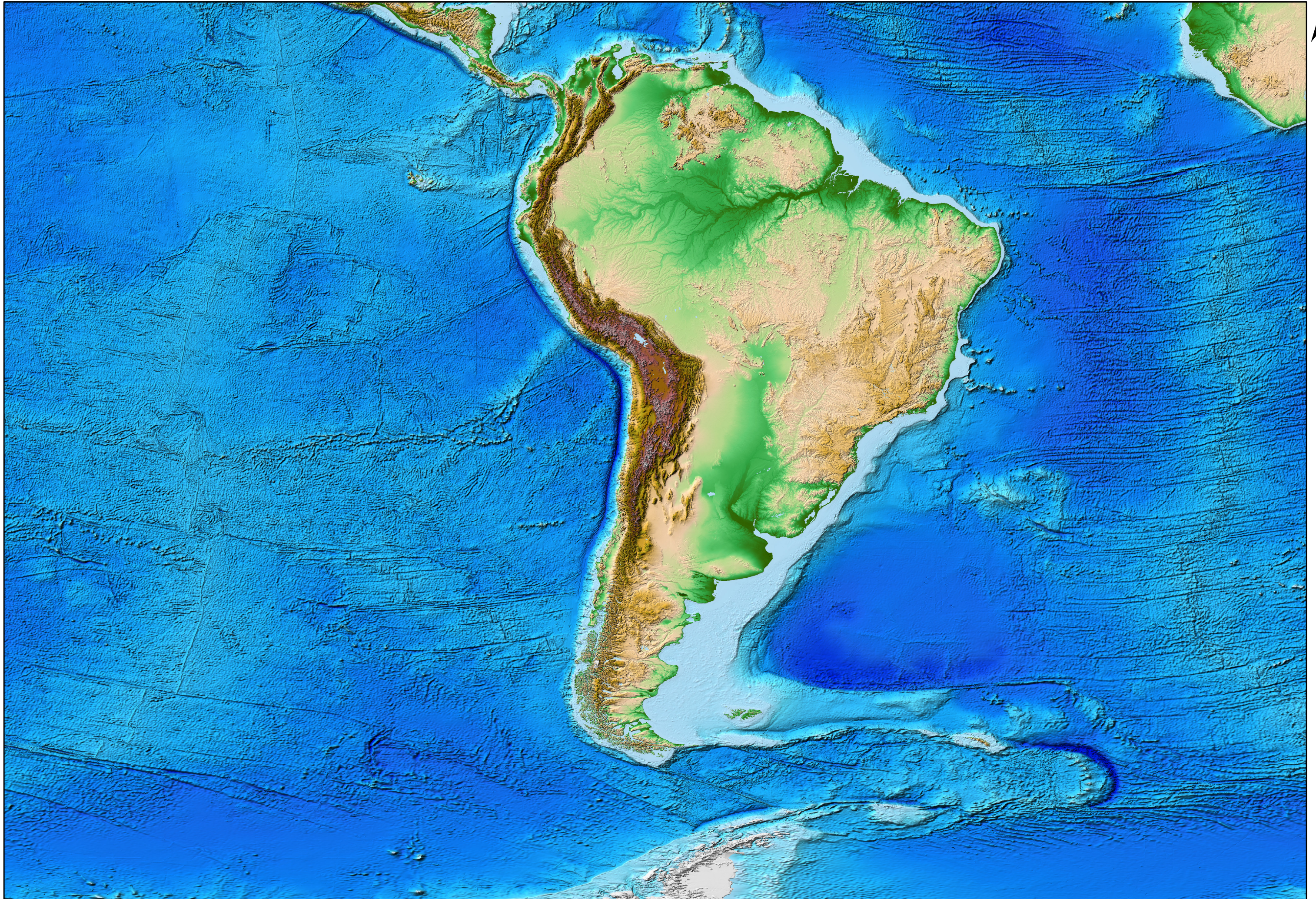
0 875 1,750 3,500 5,250 7,000 Kilometers

South America Group



0 875 1,750 3,500 5,250 7,000 Kilometers

South America Group

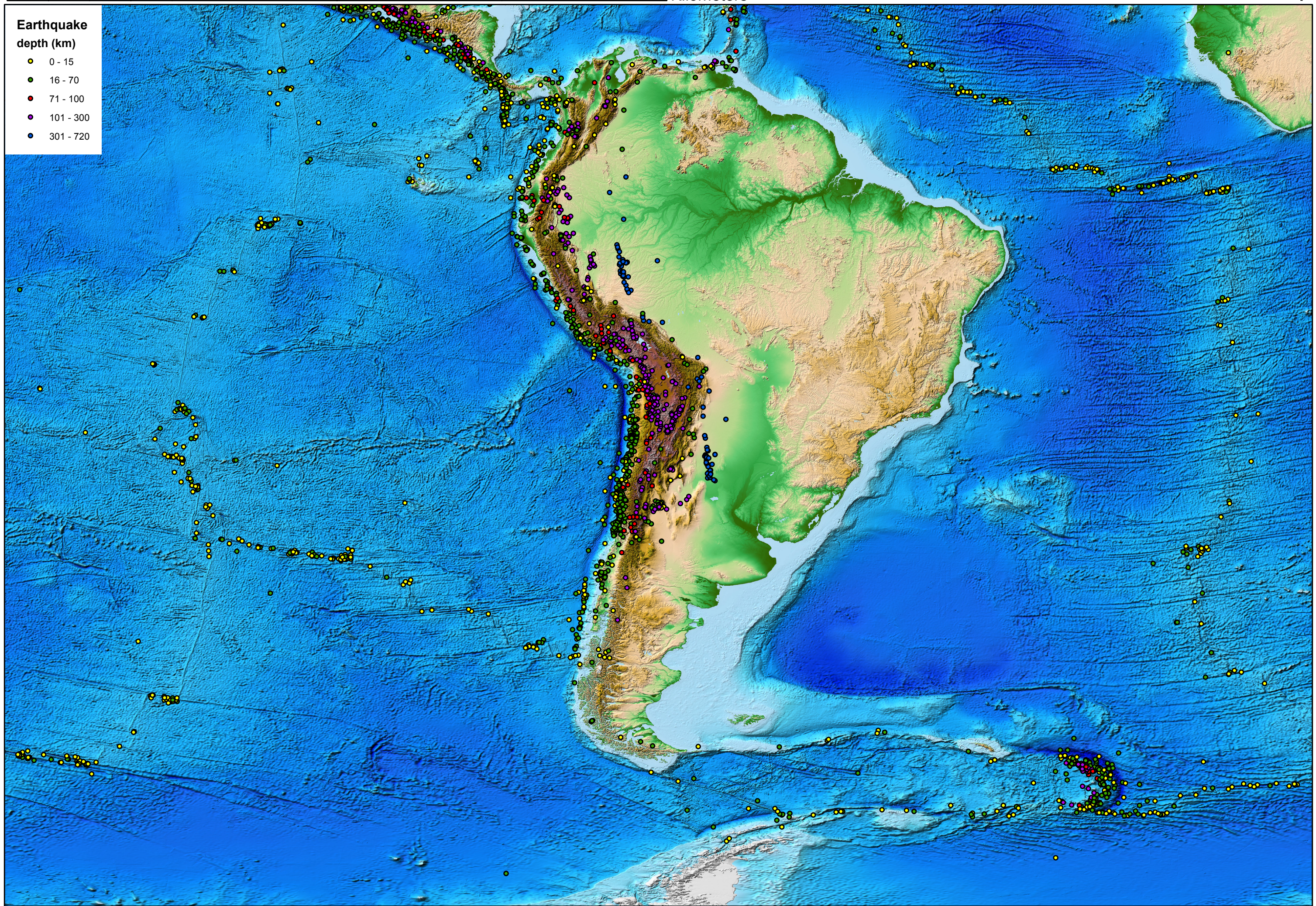


0 875 1,750 3,500 5,250 7,000 Kilometers

South America Group

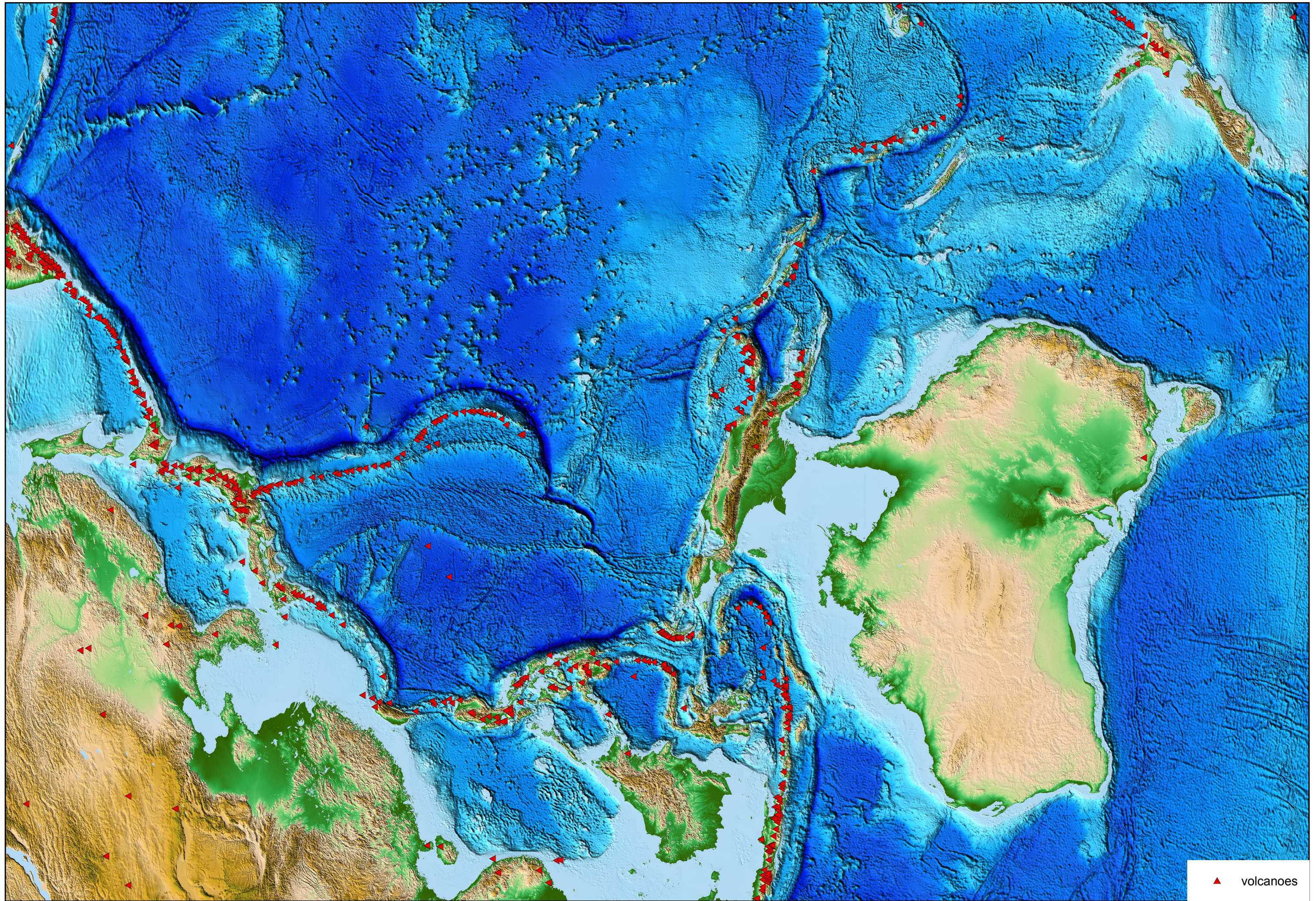
Earthquake depth (km)

- 0 - 15
- 16 - 70
- 71 - 100
- 101 - 300
- 301 - 720



0 750 1,500 3,000 4,500 6,000
Kilometers

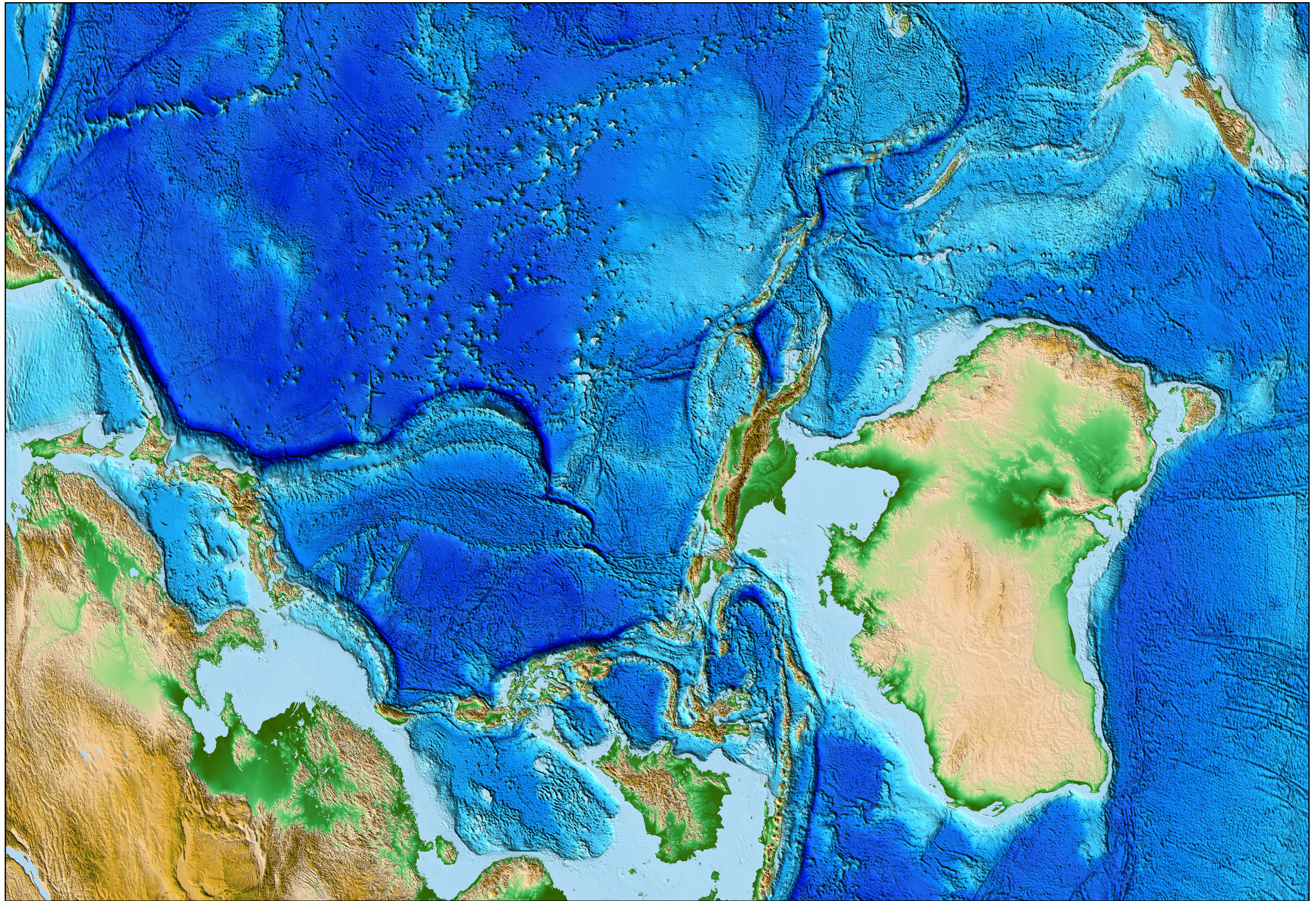
z Pacific Group



▲ volcanoes

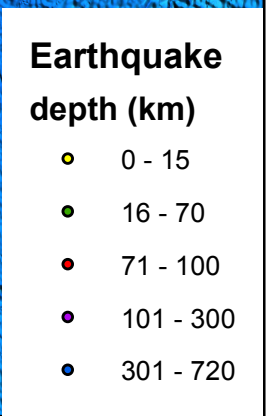
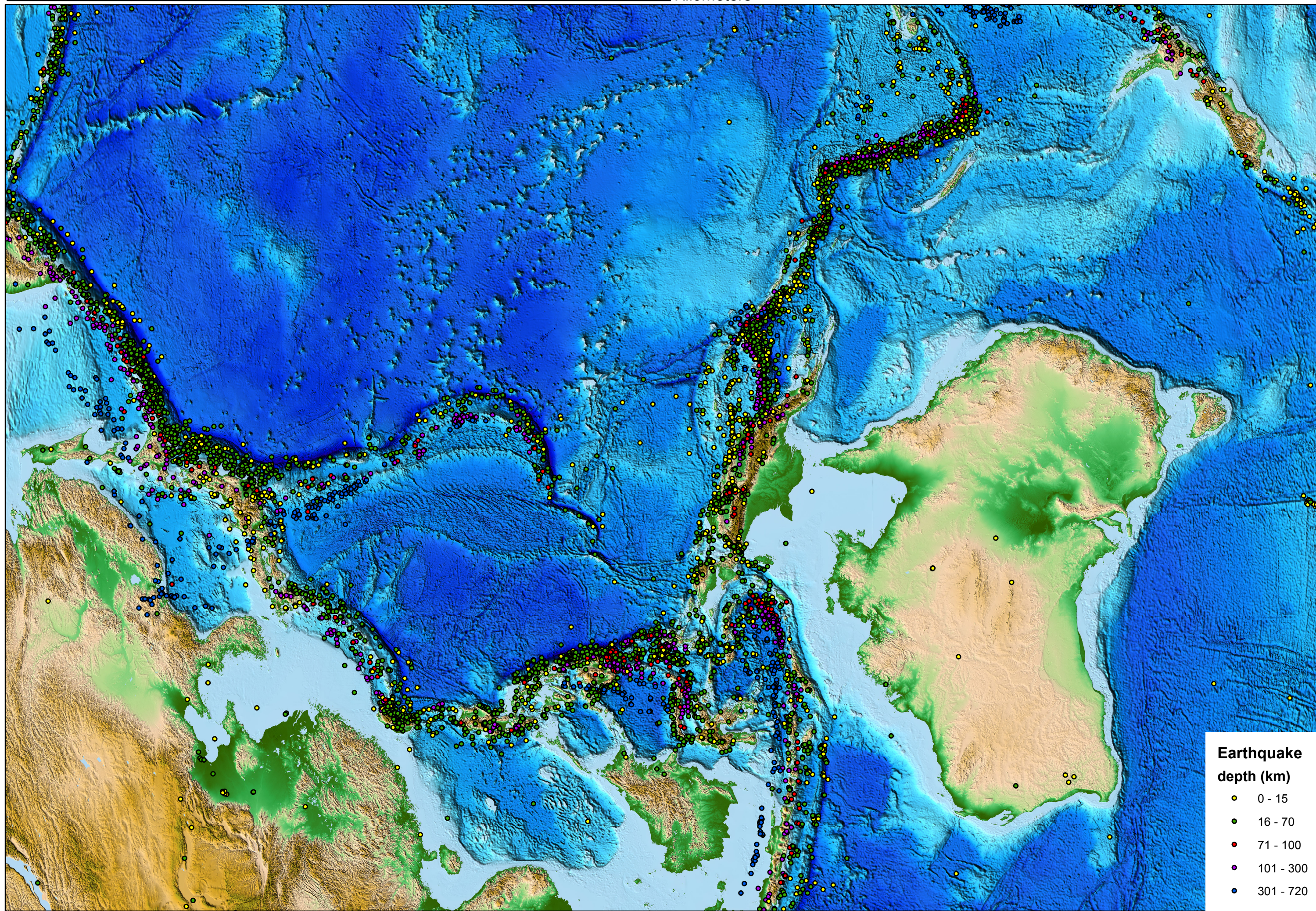
0 750 1,500 3,000 4,500 6,000 Kilometers

z Pacific Group



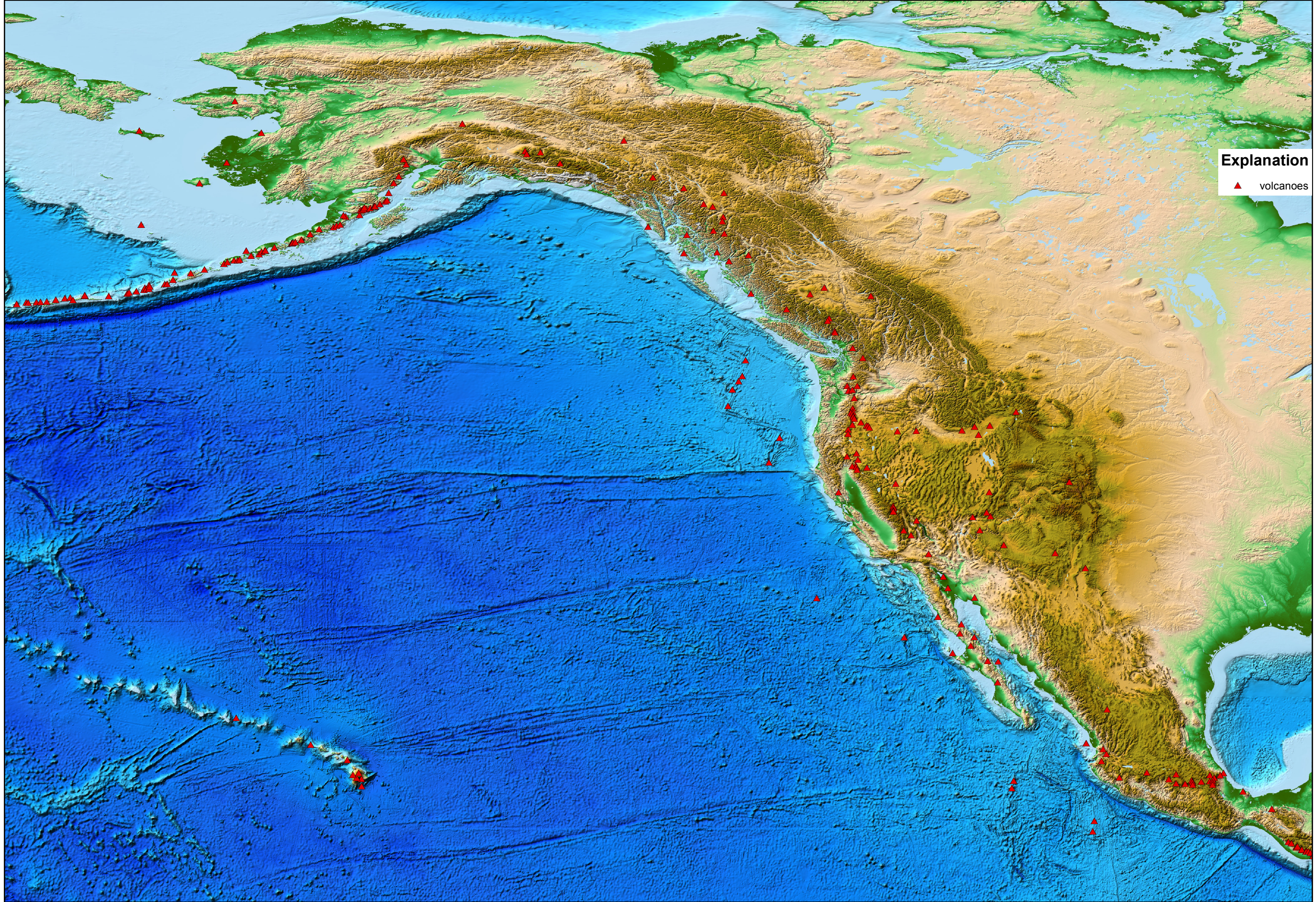
0 750 1,500 3,000 4,500 6,000 Kilometers

z ← Pacific Group



0 625 1,250 2,500 3,750 5,000 Kilometers

North America Group

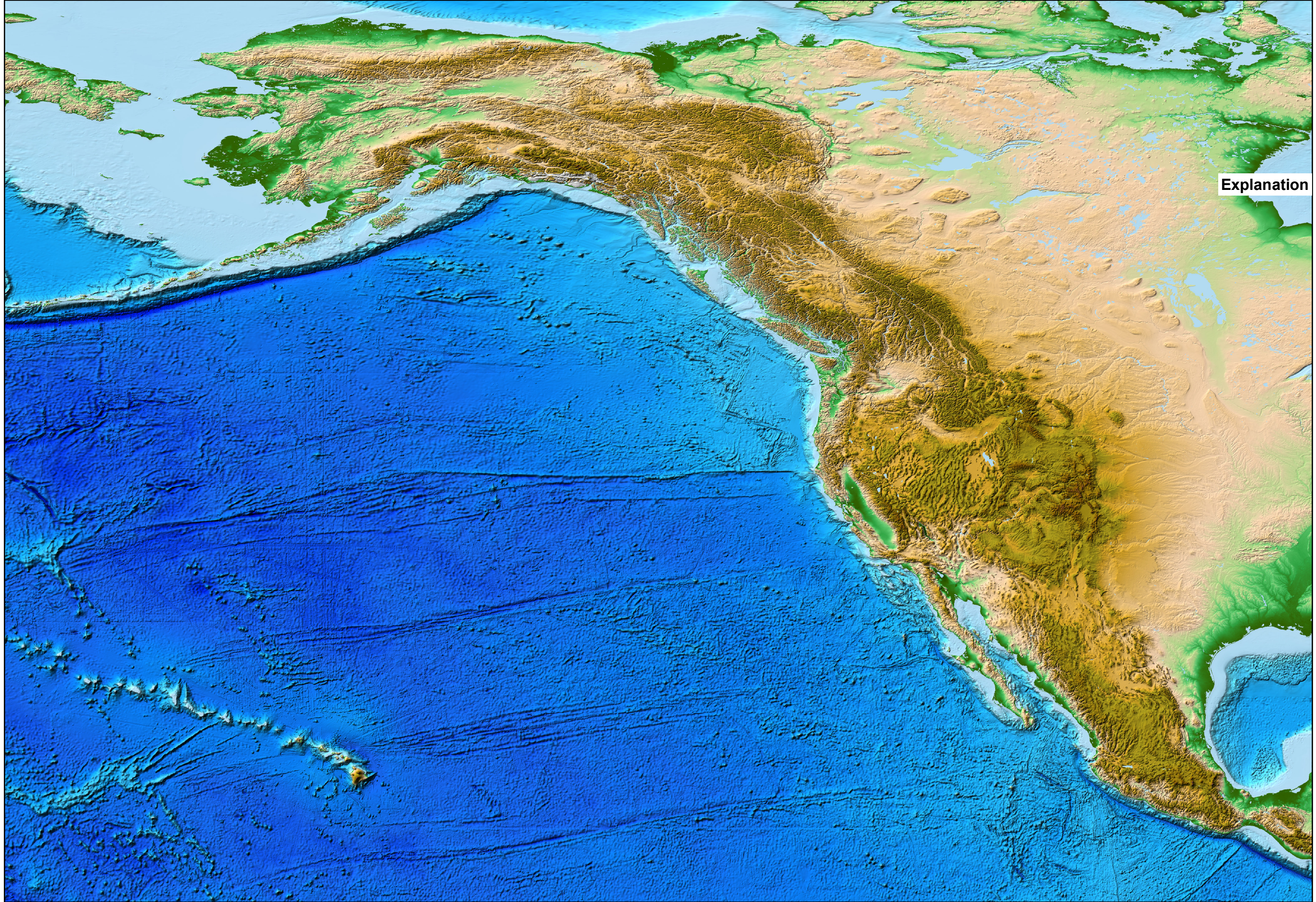


Explanation

▲ volcanoes

0 625 1,250 2,500 3,750 5,000 Kilometers

North America Group



Explanation

0 625 1,250 2,500 3,750 5,000 Kilometers

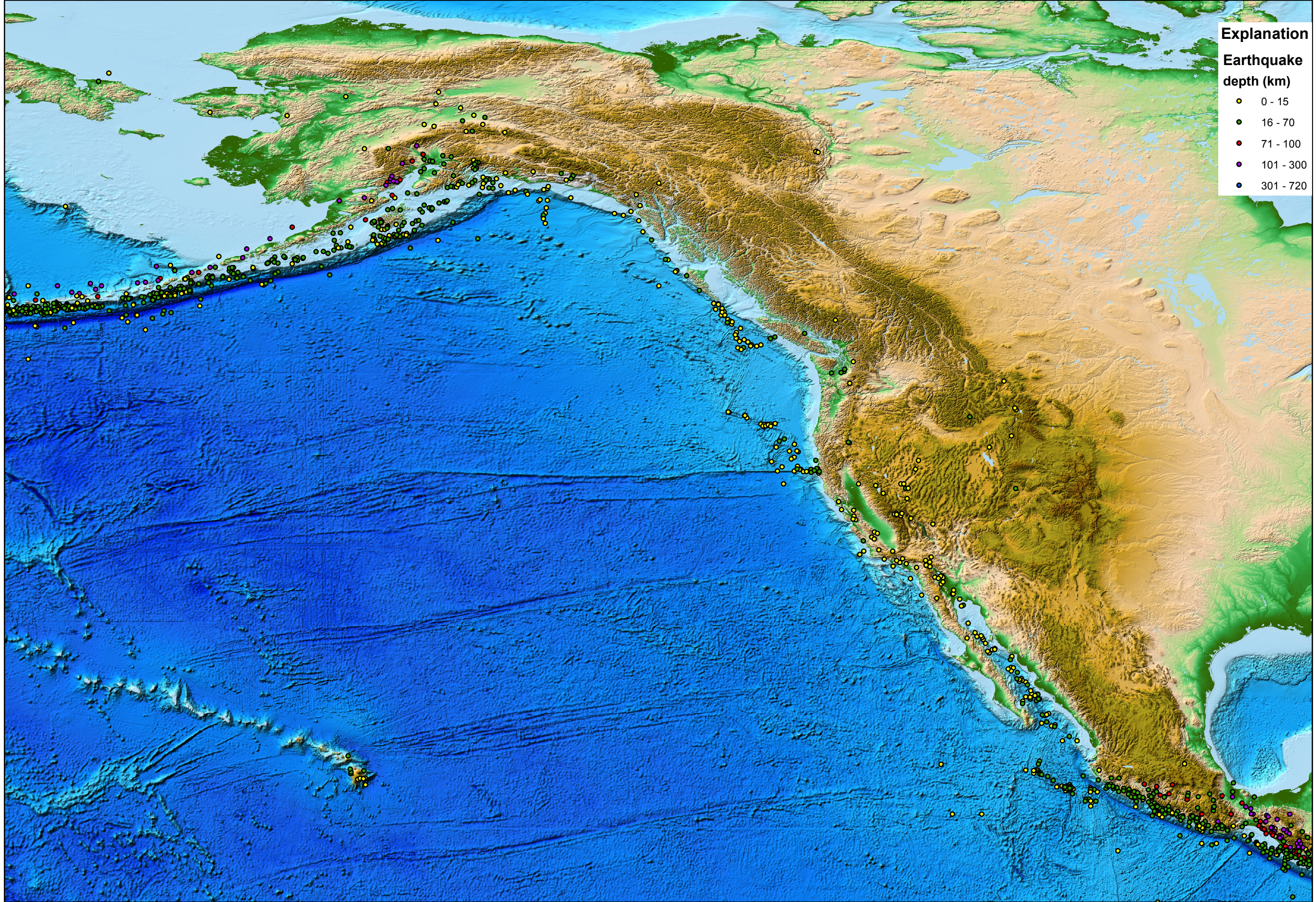
North America Group



Explanation

Earthquake depth (km)

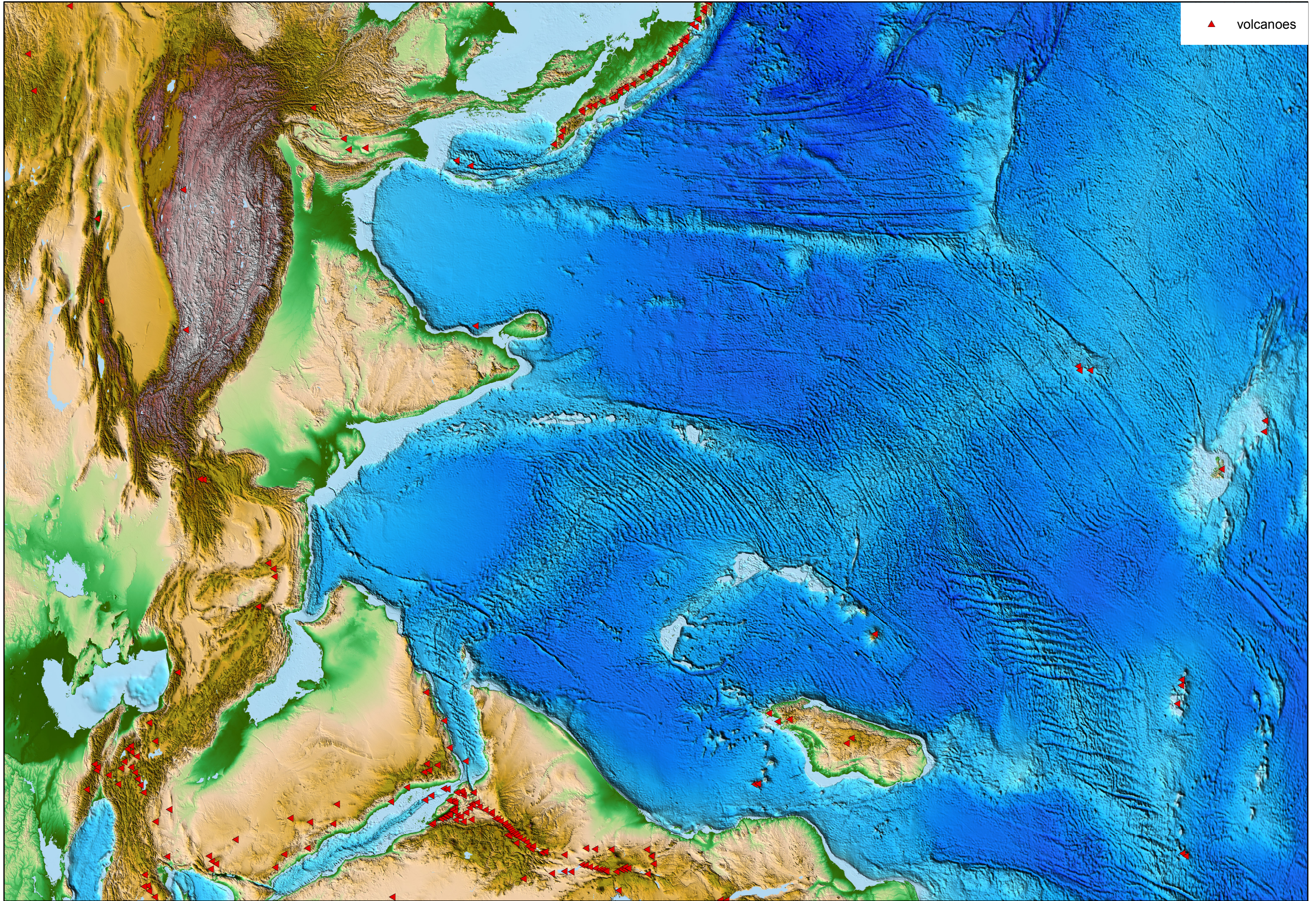
- 0 - 15
- 16 - 70
- 71 - 100
- 101 - 300
- 301 - 720



0 750 1,500 3,000 4,500 6,000 Kilometers

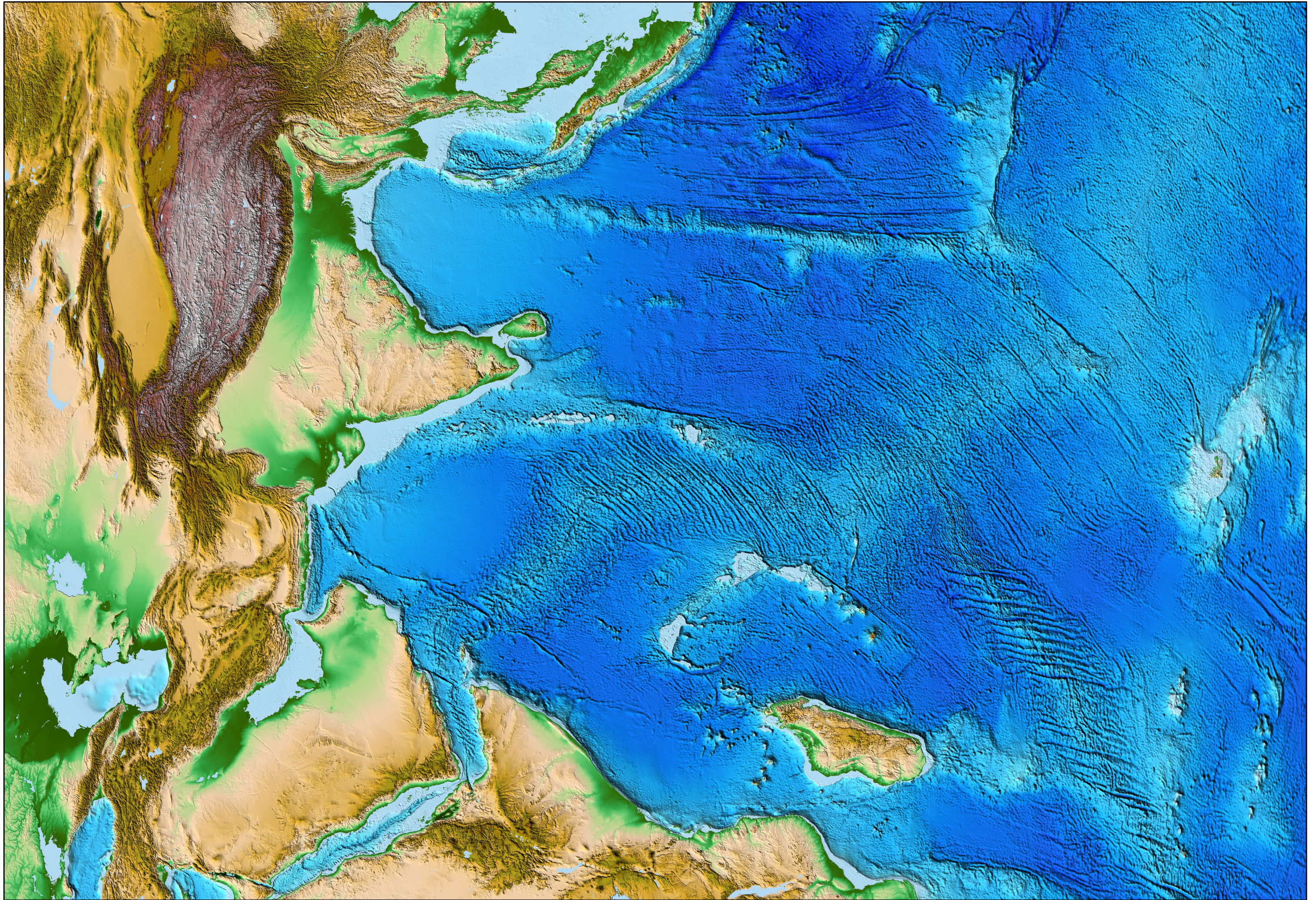
z Indian Ocean Group

▲ volcanoes



0 750 1,500 3,000 4,500 6,000 Kilometers

z Indian Ocean Group



0 750 1,500 3,000 4,500 6,000 Kilometers

