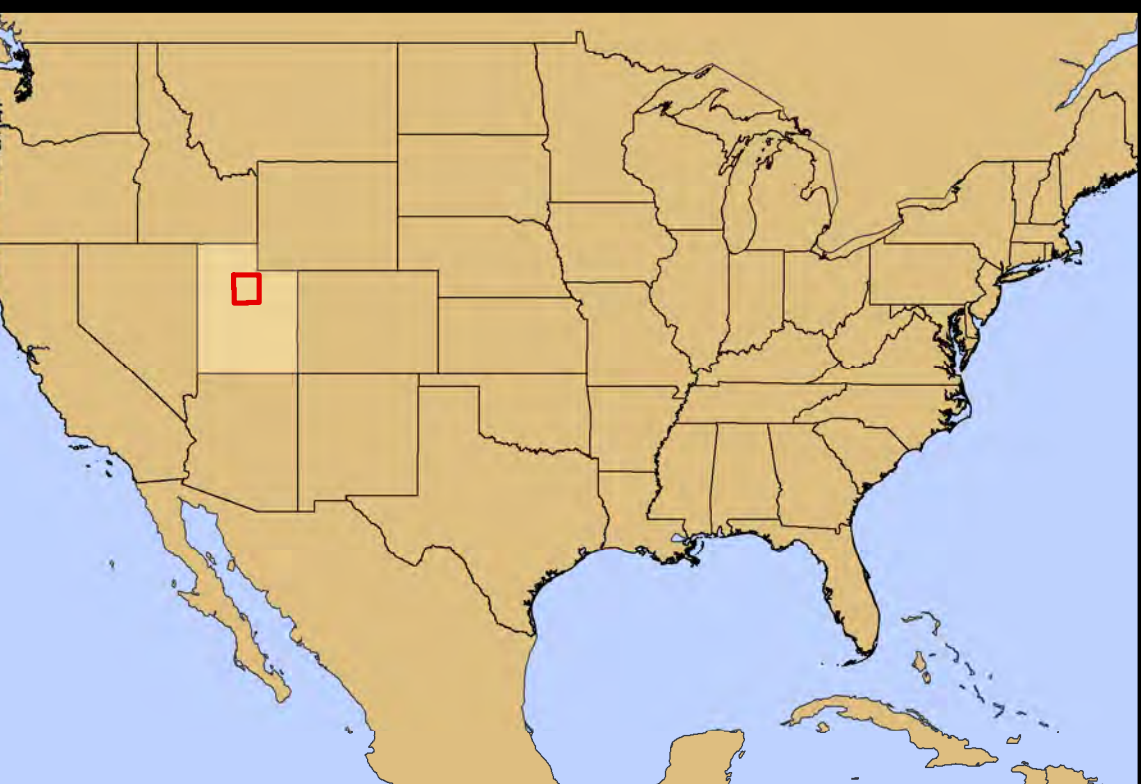
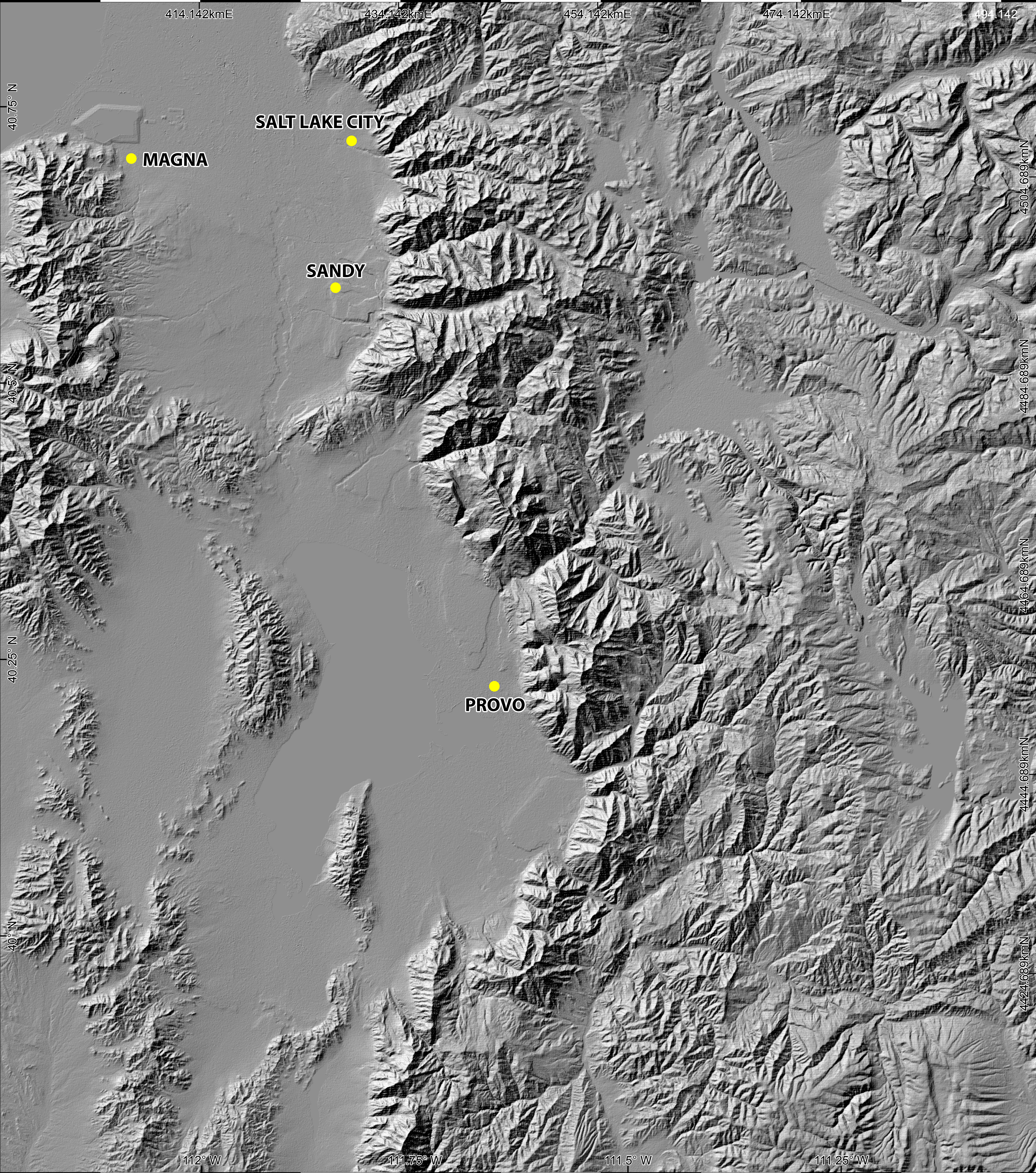


Utah Hillshade



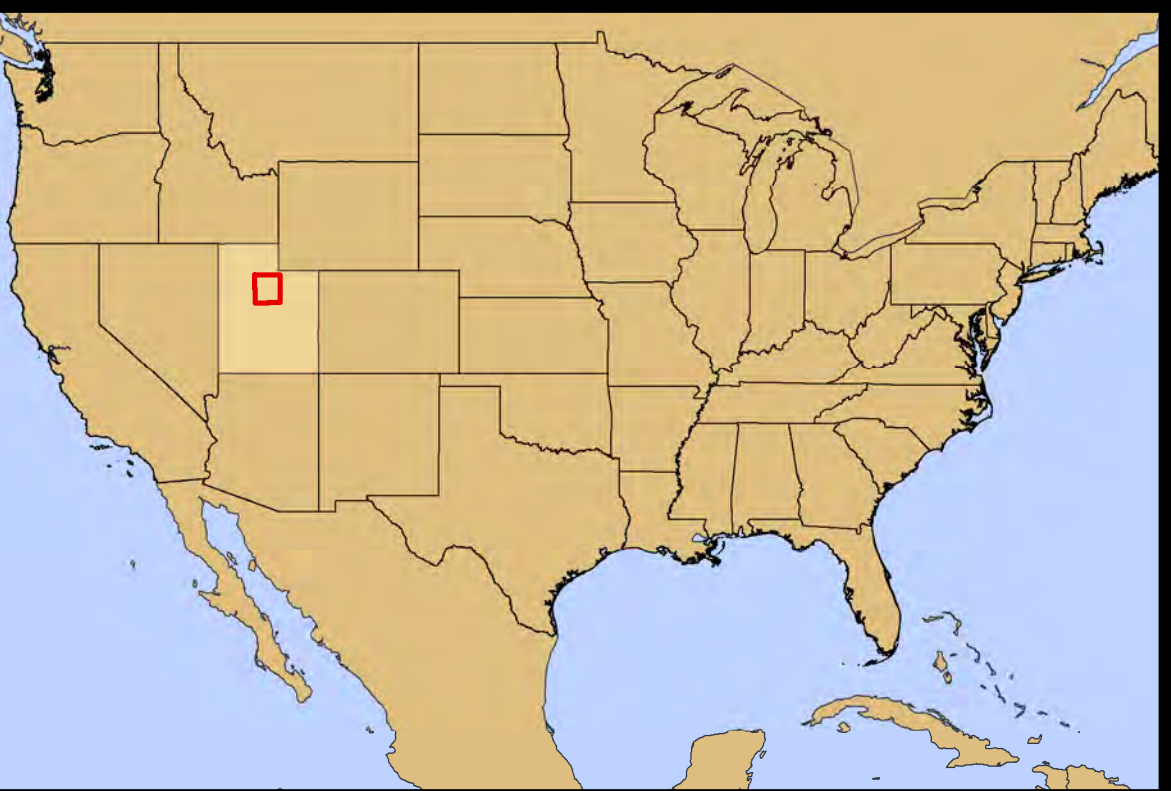
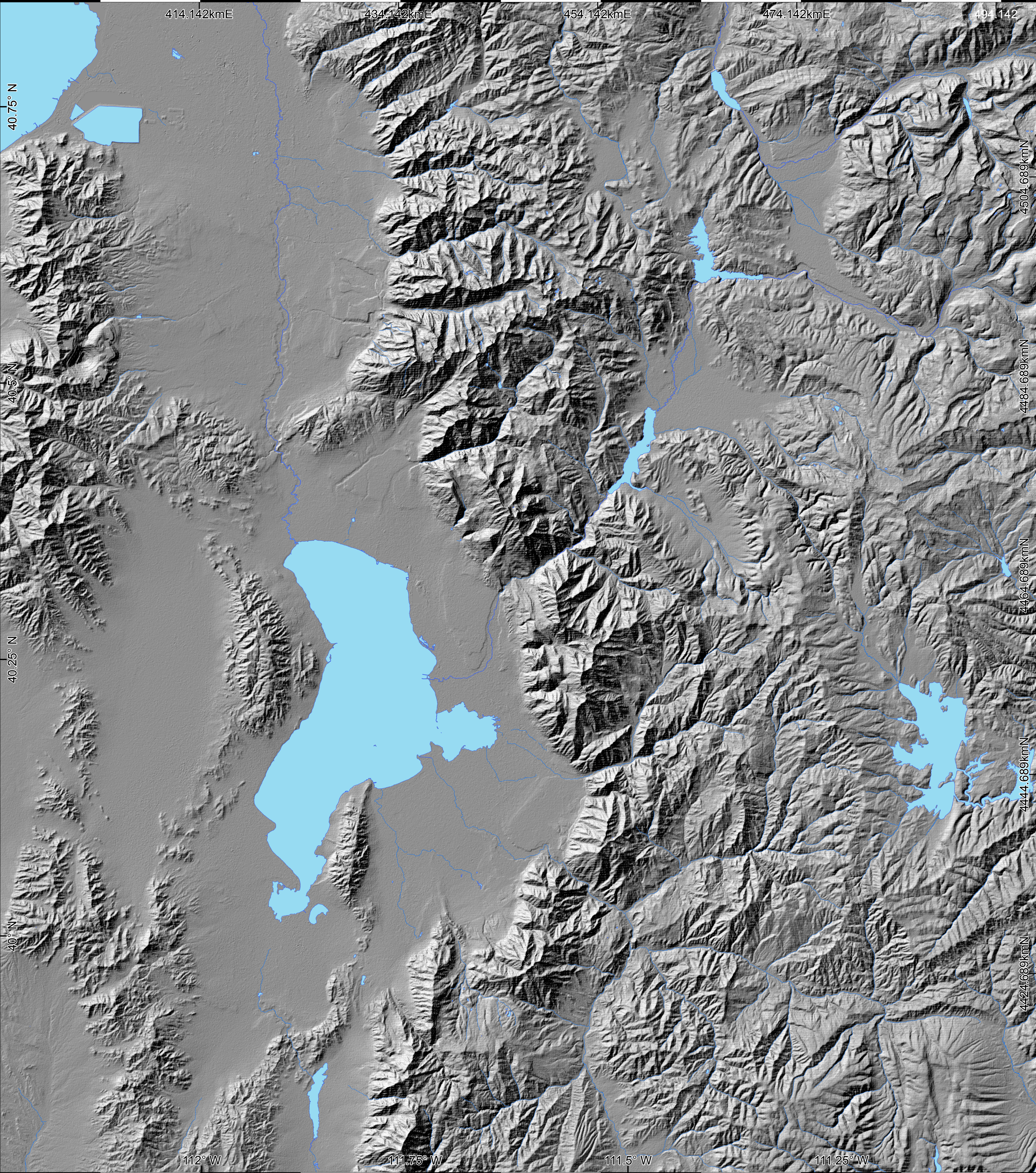
0 12.5 25 km

Sources:
Country and state boundaries
provided by ESRI.
SRTM DEM data provided by
OpenTopography.

1:190,000

N

Utah Hillshade + Water



0

12.5

25

km

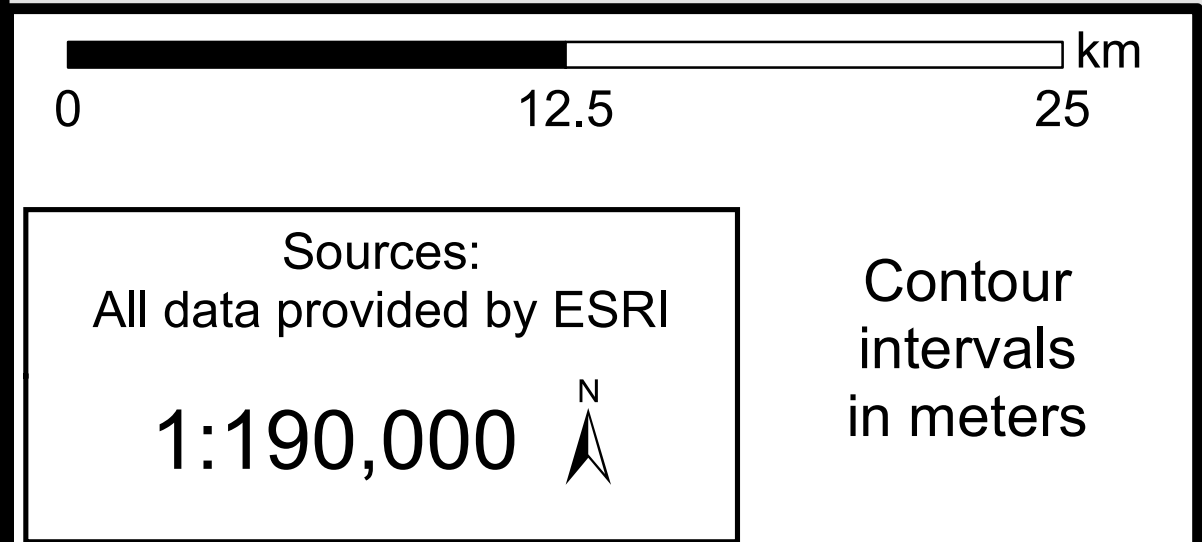
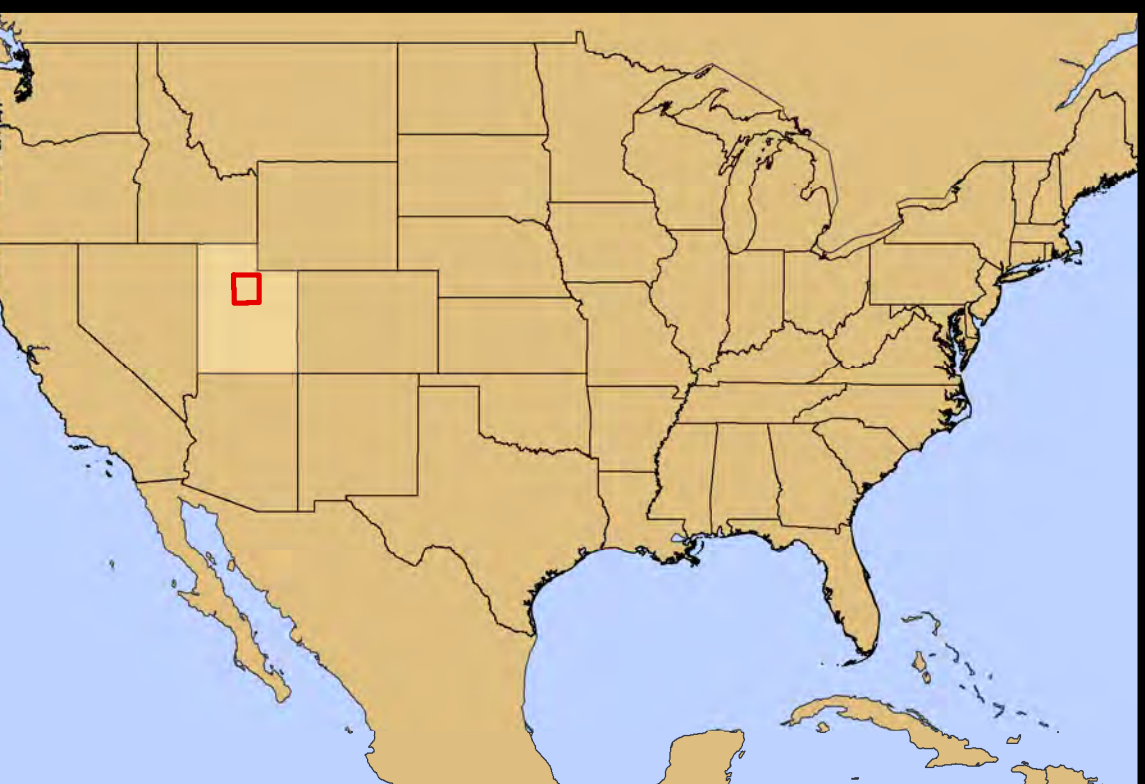
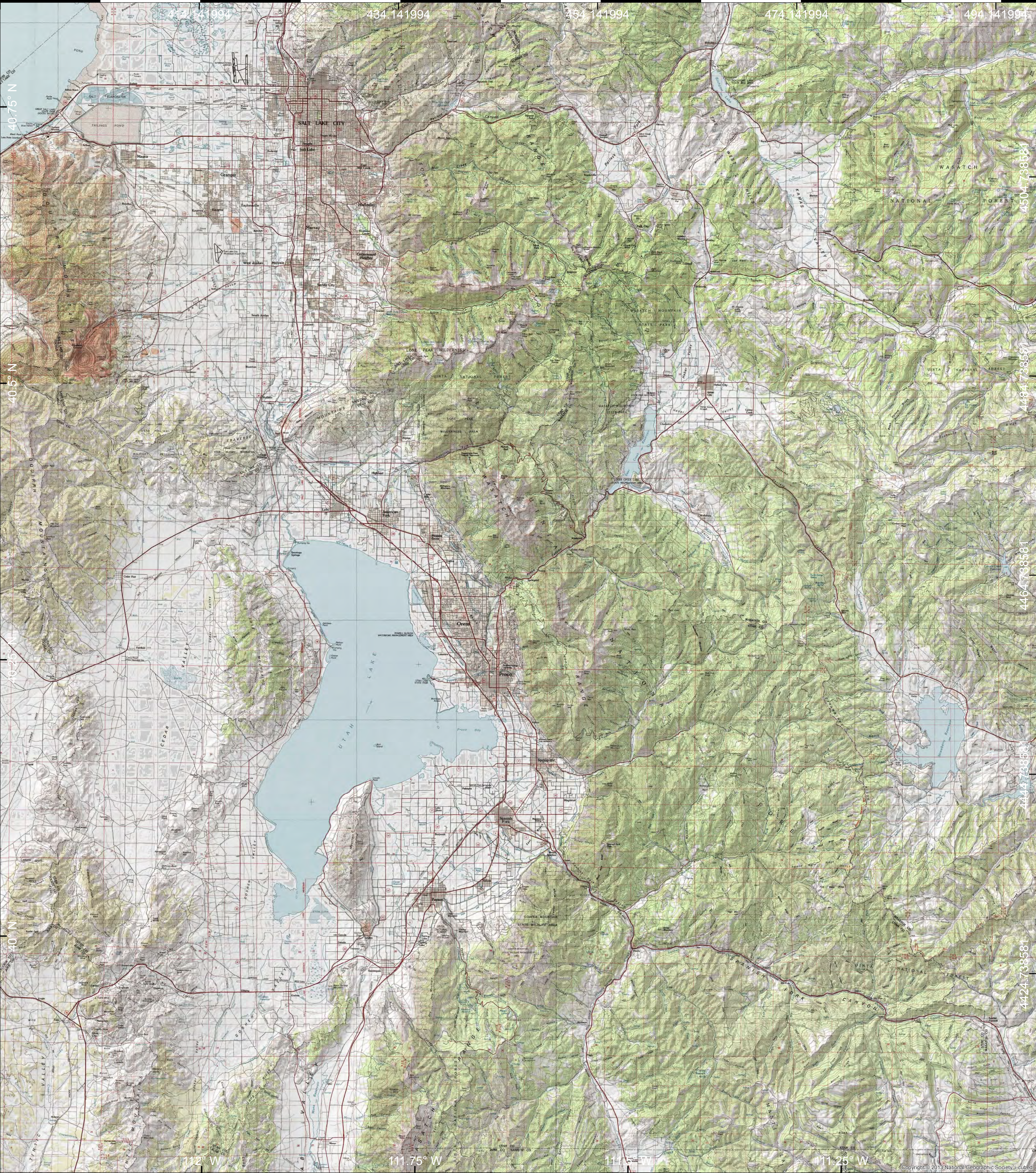
Sources:
Country and state boundaries
provided by ESRI.
Hydrologic data provided by
the USGS.
SRTM DEM data provided by
OpenTopography.

Surface
Water

1:190,000

N

Utah Topography



Utah Aerial Imagery



Sources: Esri, DigitalGlobe, GeoEye, Earthstar Geographics, CNES/Airbus DS, USDA, USGS, AeroGRID, IGN, IGP, eotestops, and the GIS User Community

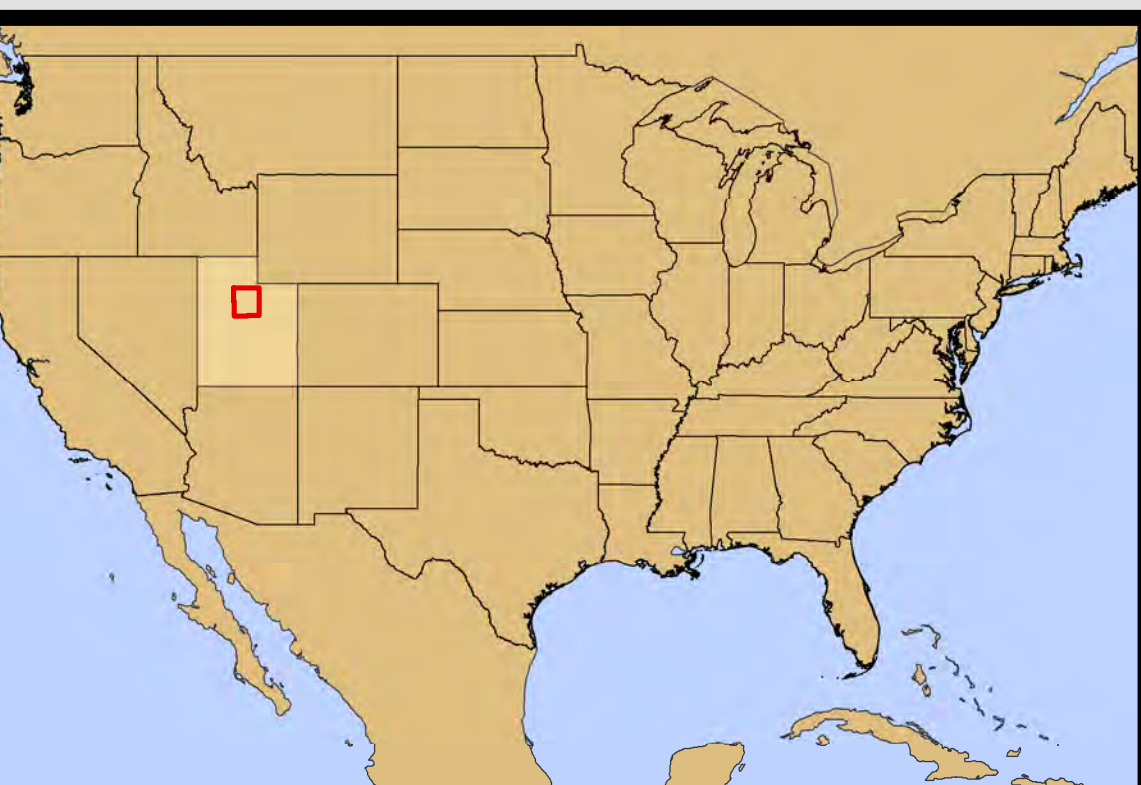
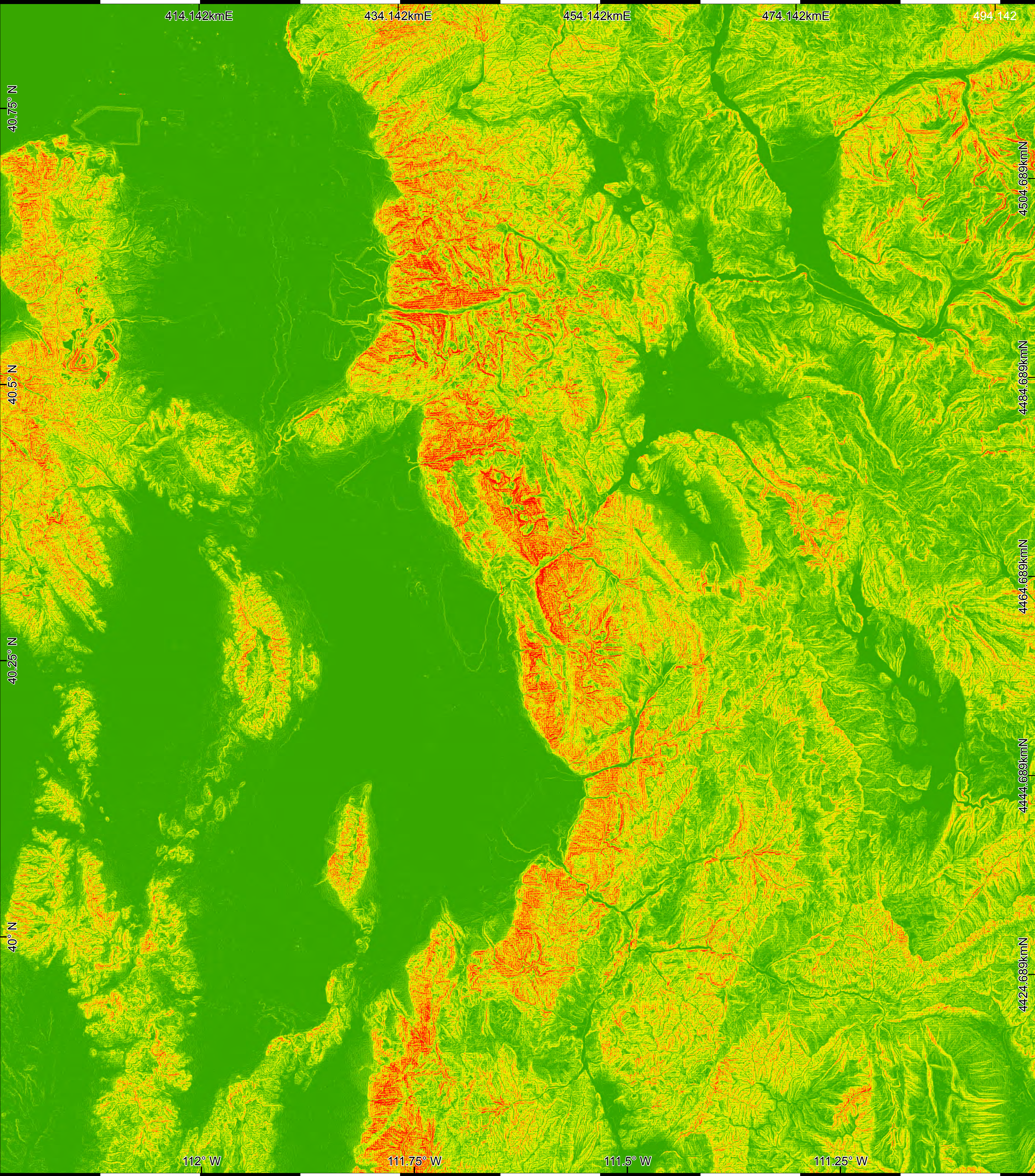
Sources:
All data provided by ESRI
Map made 1/29/16

1:190,000



0 12.5 25 km

Utah Slope



0 12.5 25 km

Slope (degrees)

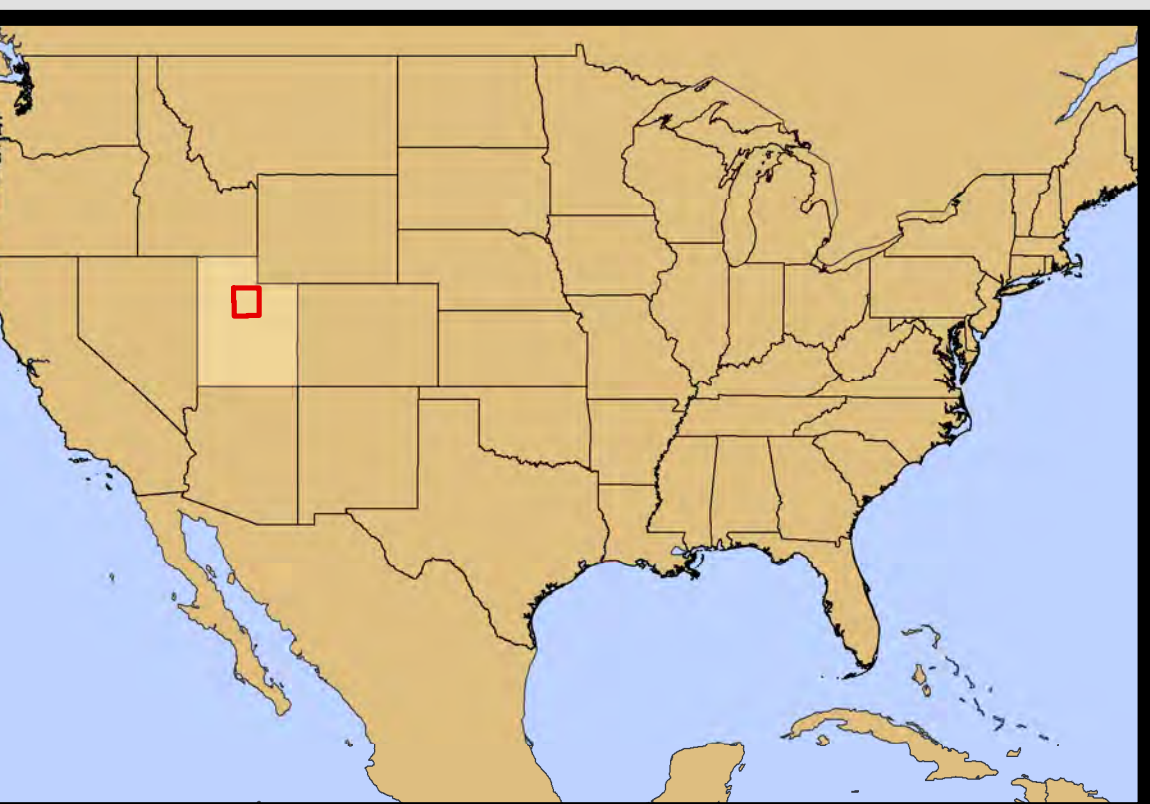
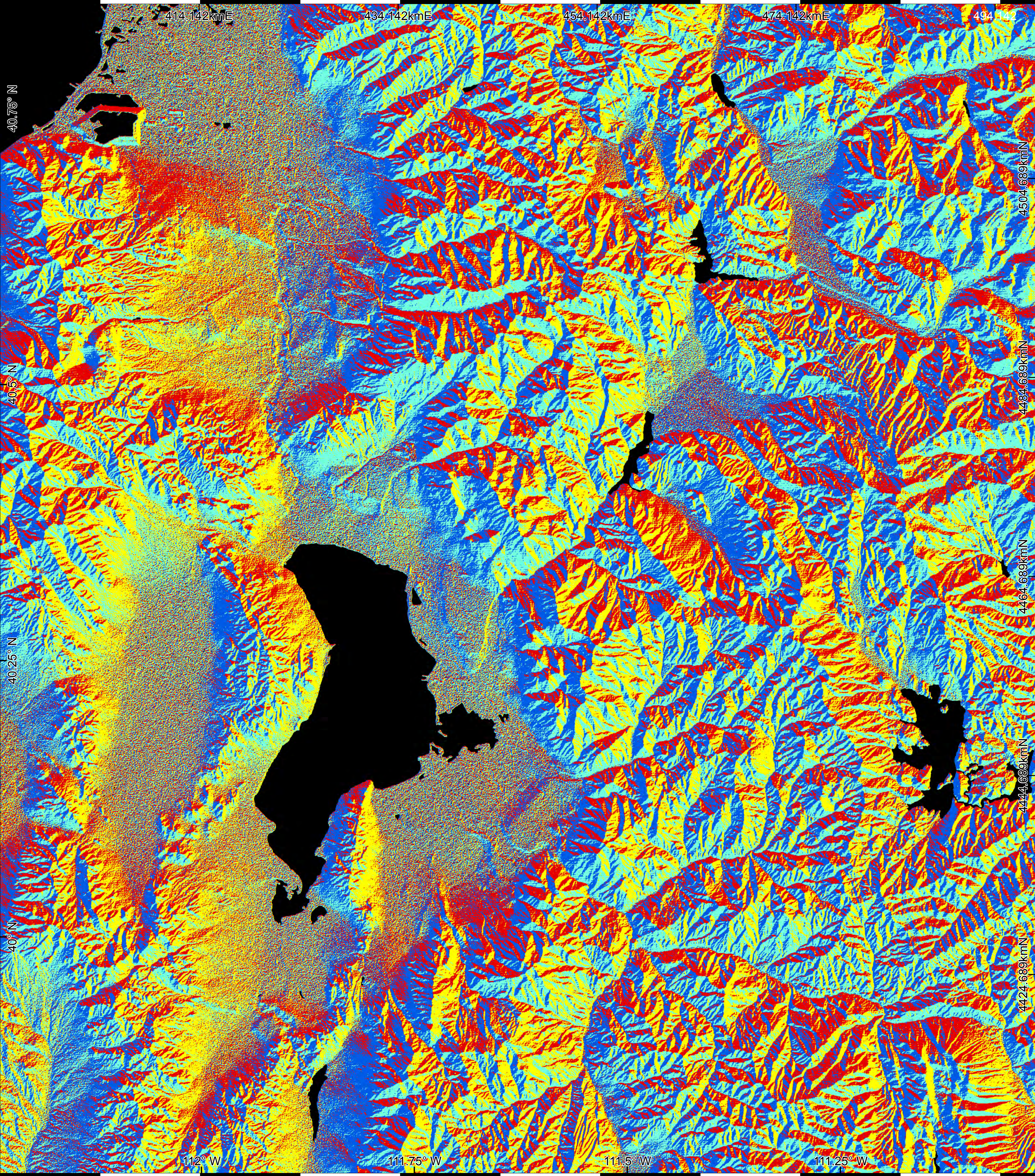
0° - 5°	25° - 30°
5° - 10°	30° - 35°
10° - 15°	35° - 40°
15° - 20°	40° - 45°
20° - 25°	45° - 77.47°

Sources:
Country and state boundaries provided by ESRI.
SRTM DEM data provided by OpenTopography.

1:190,000

N

Utah Aspect



0

12.5

25

km

Aspect (degrees)

Flat

315° - 45°

45° - 135°

135° - 225°

225° - 315°

1:190,000

N

Sources:
Country and state boundaries
provided by ESRI.
SRTM DEM data provided by
OpenTopography.