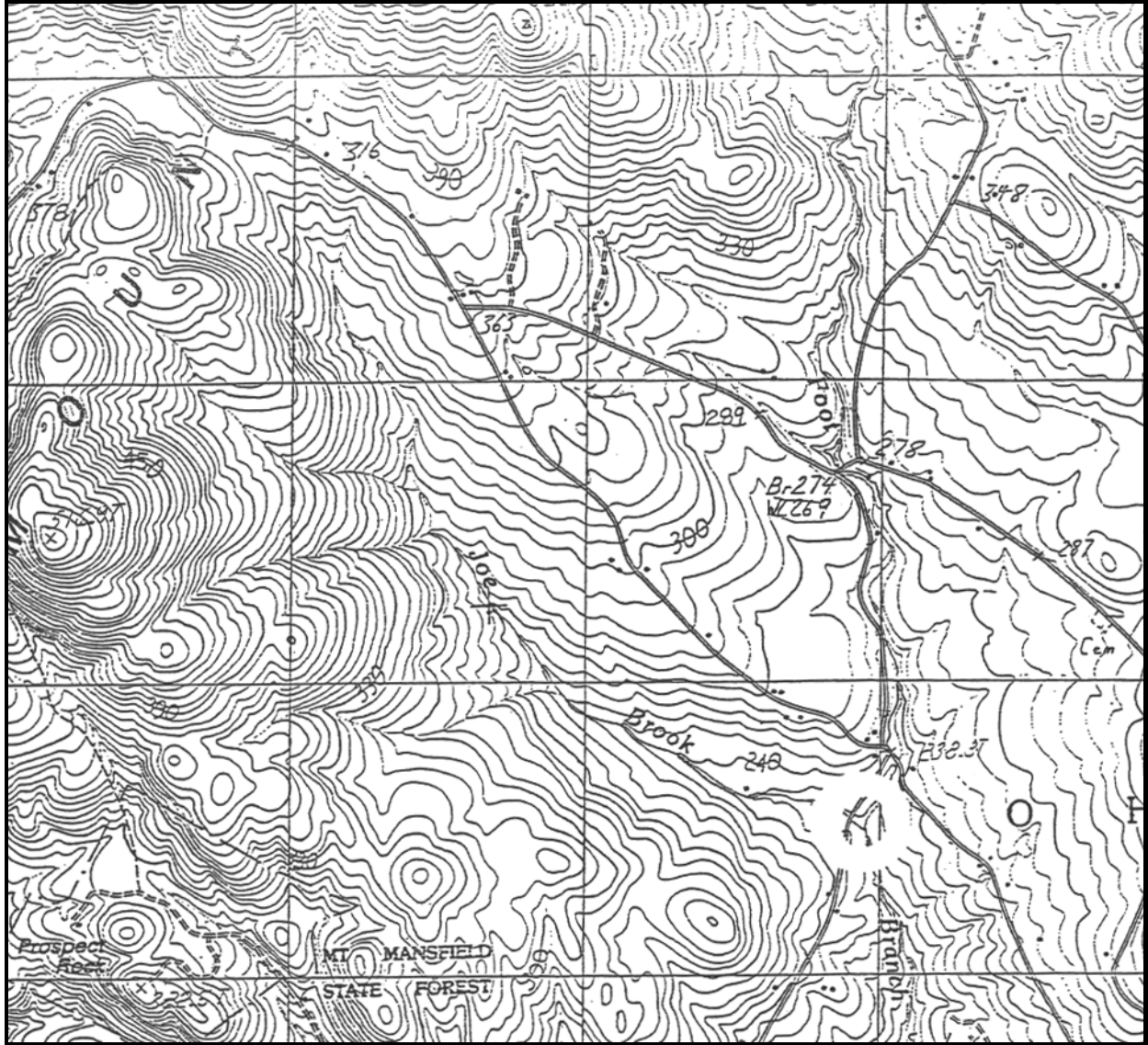


Topographic Maps

Goals: interpret a topographic map, draw a bar scale, and calculate a ratio scale.



1. In the space above this question, draw a bar scale that is 2 km in length given that the distance between the 'J' in Joe and the 'k' in Brook is equivalent to 1 km. Label the bar scale and divide it into four equal segments.
2. Calculate the ratio scale for the map above. Use the back of this sheet to show the mathematics used to determine the ratio scale.
3. All precipitation that falls on the ground and passes through the confluence of Joe Brook and Foot Branch (indicated by the circle) defines the watershed (land area) for Joe Brook. Circumscribe the watershed drained by Joe Brook. Draw carefully and use a very fine point pen.