

About Us

SuAVE is an online tool with a new, visual, approach to exploring and analyzing digital collections and surveys

SuAVE

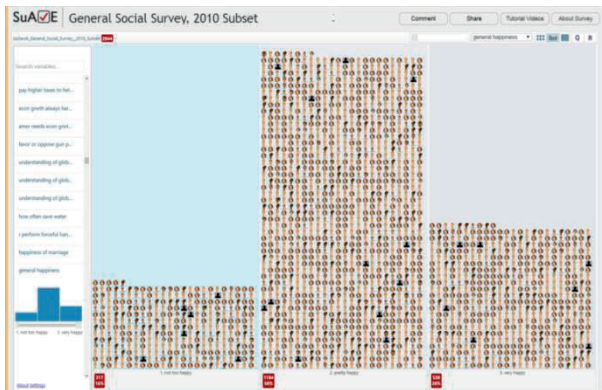
<http://suave.sdsc.edu/>



Supported by NSF
Grant ACI-1443082



*Survey Analysis via
Visual Exploration*



- ✓ Combined intuitive **visual, statistical and cartographic analysis**
- ✓ **Faceted search** to filter items (respondents) based on any combination of characteristics
- ✓ **Exploring distributions** of responses to any question in a given subset
- ✓ Easily **publishing surveys online** with images or icons
- ✓ Analysis of **outliers**
- ✓ Generating **explanatory rules**
- ✓ **Geocoding** on the fly
- ✓ Collaborative survey analysis via **shared annotations**

Application Areas:

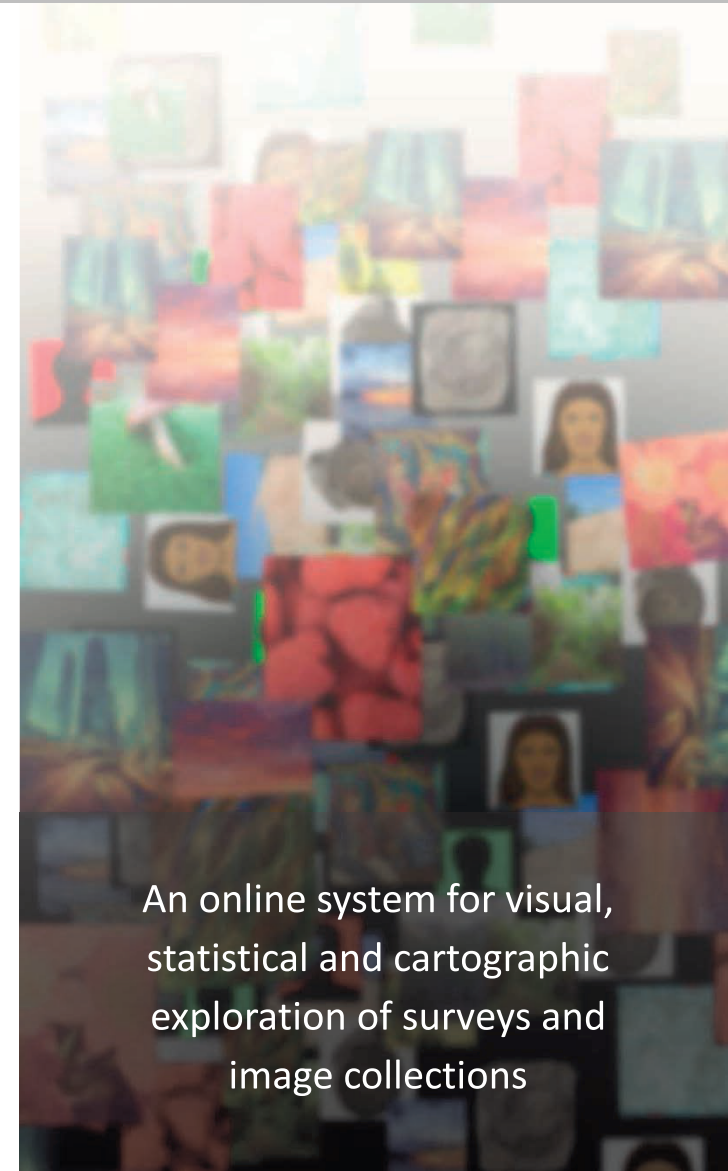
Opinion Surveys
Biology and Ecology
Health Informatics
Library Collections
Geosciences
Visual Arts
Humanities
Archaeology
Urban Planning
Organization Management
Portfolio Analysis

Contact:

Ilya Zaslavsky, SDSC (zaslavsk@sdsc.edu)

© SDSC 2016

Spatial Information Systems Lab



An online system for visual,
statistical and cartographic
exploration of surveys and
image collections

Survey Highlights



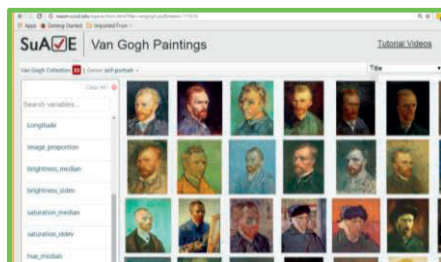
Macrofossils Collection

Browse the award winning collection that British Geological Survey assembled from several natural history museums (8000+ images.)



Sustainable Development Goal (SDG) Indicators

The UN's 2030 Agenda for Sustainable Development outlines 17 SDGs, including ending poverty, achieving food security, and reducing inequality. Explore SDG indicators by countries.



Van Gogh Paintings

This and other art surveys in SuAVE help art historians visualize and interpret artists' styles in different periods of their lives.

SuAVE in the Classroom

SuAVE has been used in teaching research methods to undergraduate students. It proved to be a useful tool when teaching sociology students at UCSD for the last two years. Many students who came to statistics classes with little math background and lots of anxiety benefitted from SuAVE's user-friendly, visual approach to statistical analysis.

Student Quotes

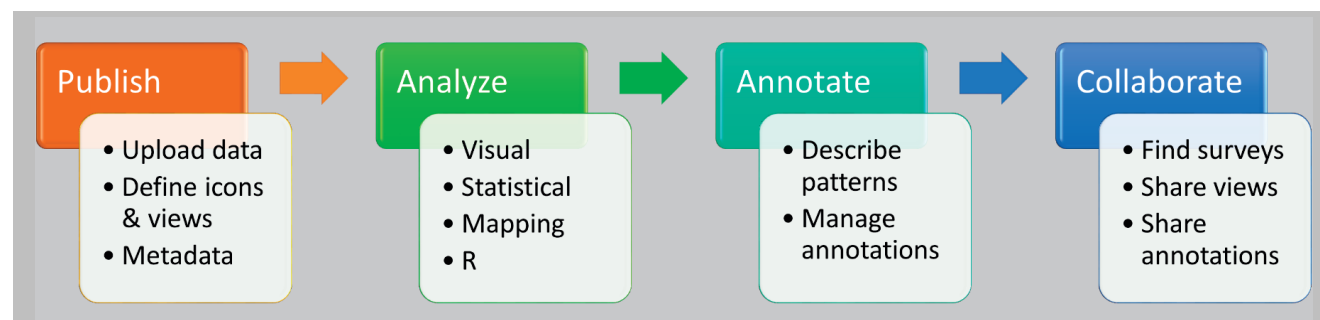
"I really liked using SuAVE. I think the visualization portion of it was extremely useful and I learned a lot from using it. In addition, it was very user friendly and easy to navigate."

"It was cool to see how you can find specific information about one respondent. The way to categorize respondents and understand odd findings was interesting because you would sometimes expect the opposite."

Publish your Own Survey!



1. Register for a SuAVE account, and click "New Survey"
2. Upload a CSV file and give it a name.
Now you can explore it in SuAVE!
3. Customize your survey: define views to include (grid, bar chart, crosstab, map, QCA, R), icons to use, specify variable types, and variables to use for titles and links.
4. Add survey metadata.
5. Make your survey public (or not). To share it, just copy-paste the URL.



See all surveys on our online gallery at
<http://suave.sdsc.edu/>

Register and create your personal survey galleries, and share them with collaborators