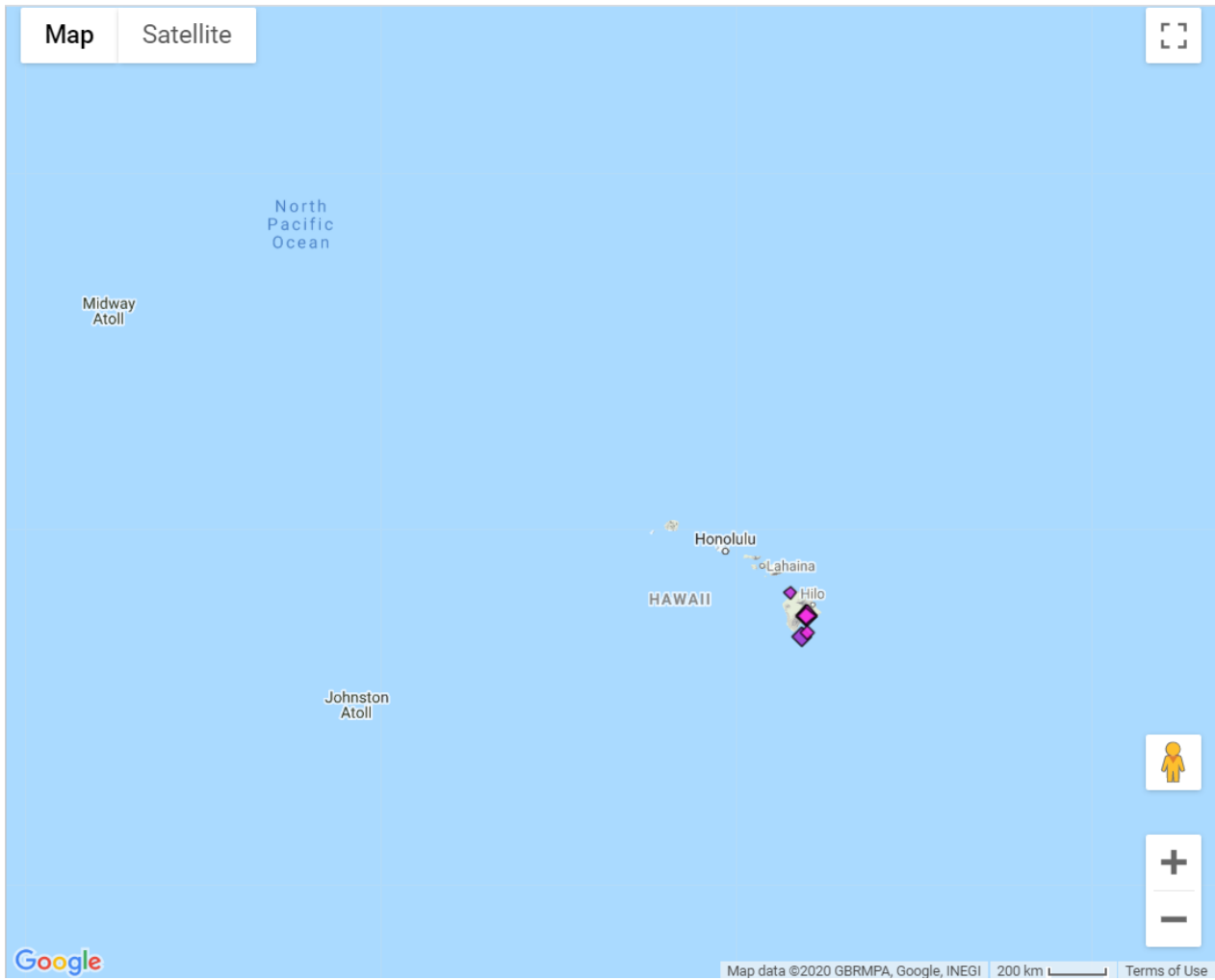
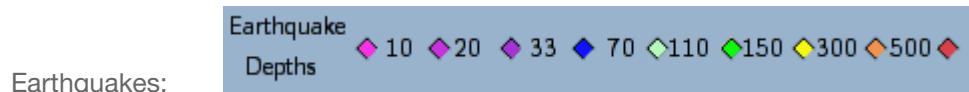


Hawaii_Earthquakes



Symbols:



Earthquakes:

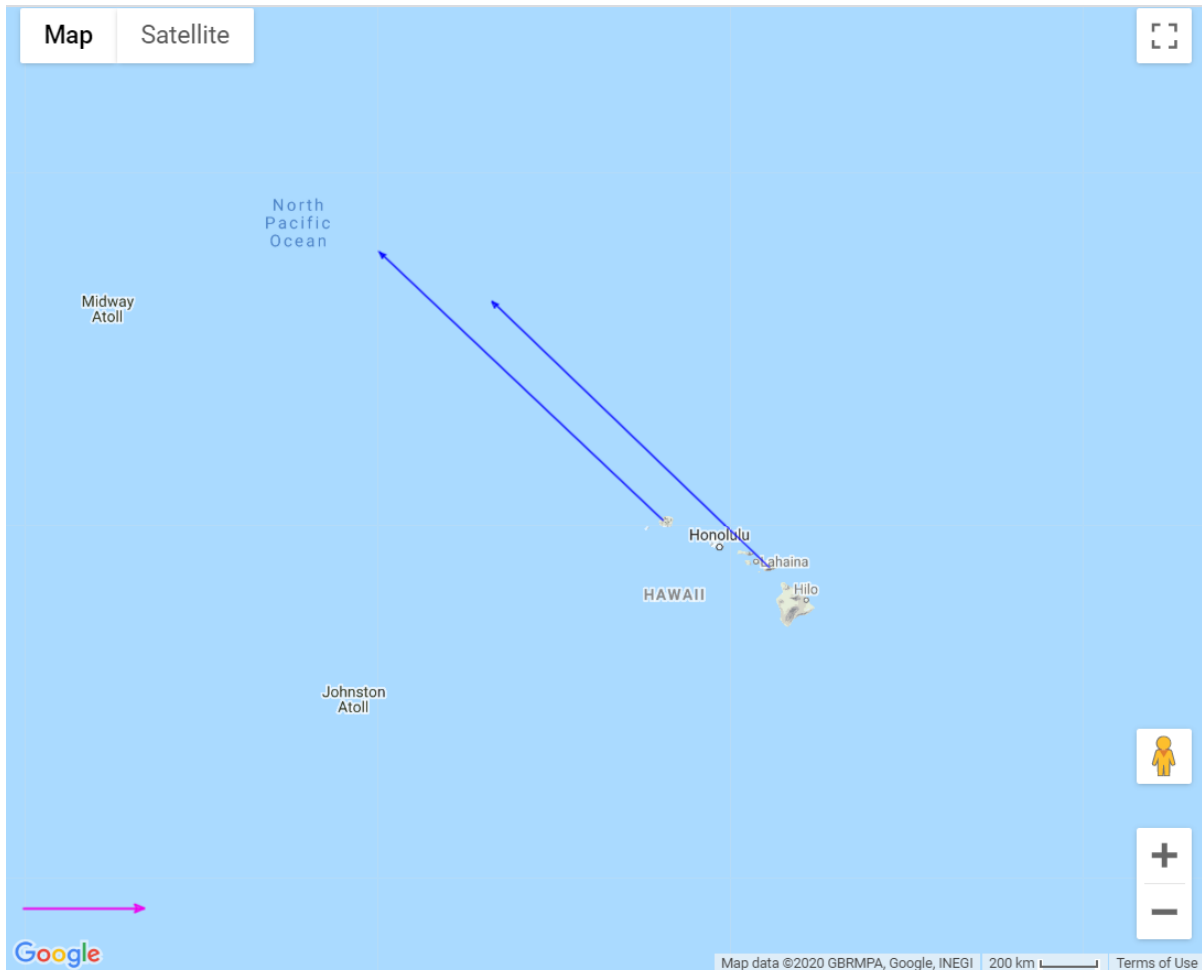
Eq mags 3 to 7:



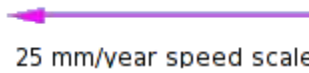
This map is credited from the following website:

<https://www.unavco.org/software/visualization/GPS-Velocity-Viewer/GPS-Velocity-Viewer.html>

Hawaii_GPS

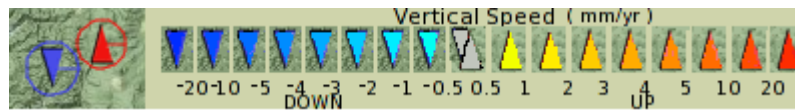


Velocity vector and error ellipse



25 mm/year speed scale

Vertical speeds:



This map is credited from the following website:

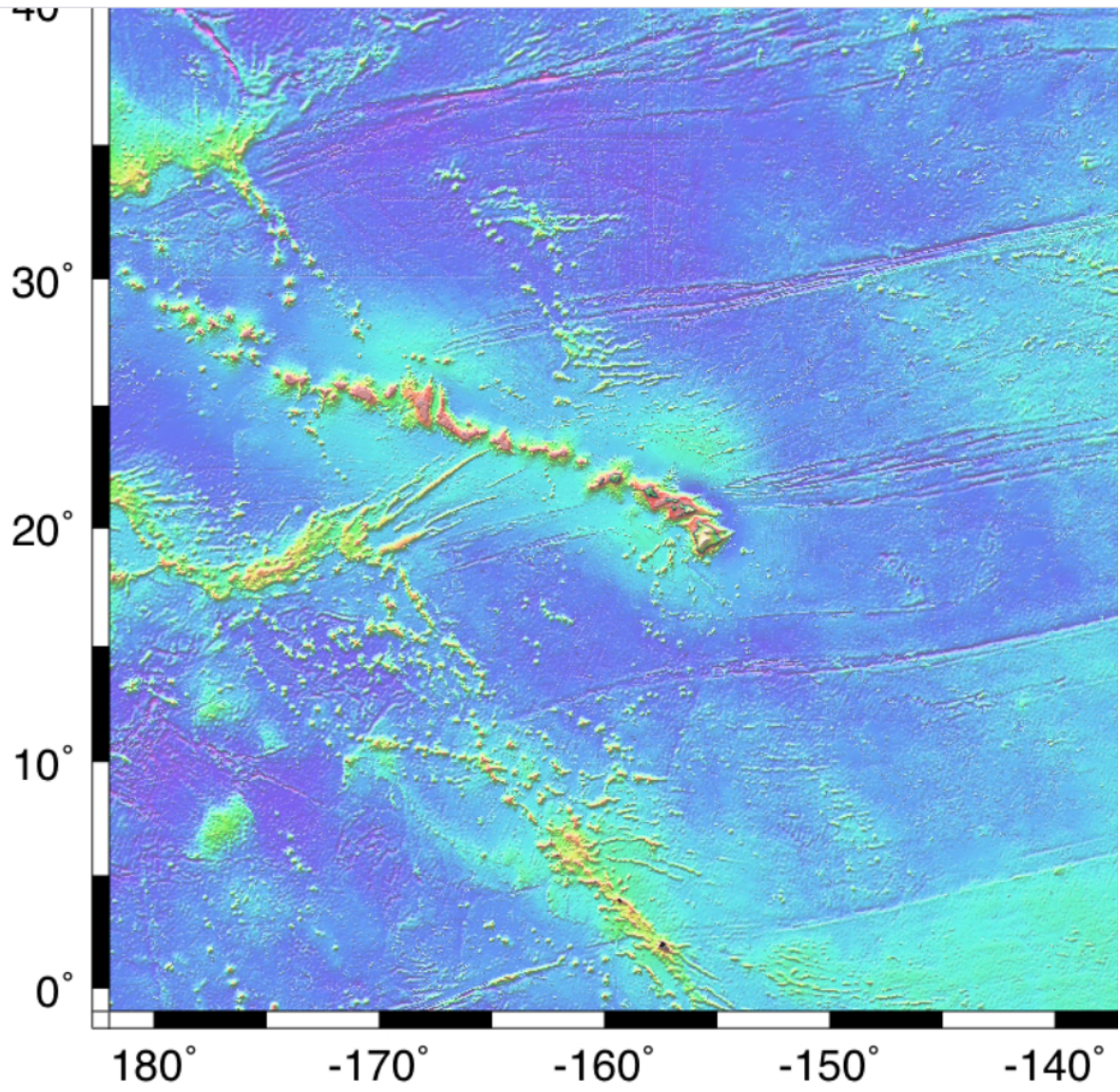
<https://www.unavco.org/software/visualization/GPS-Velocity-Viewer/GPS-Velocity-Viewer.html>

Seafloor Map of Hawaii

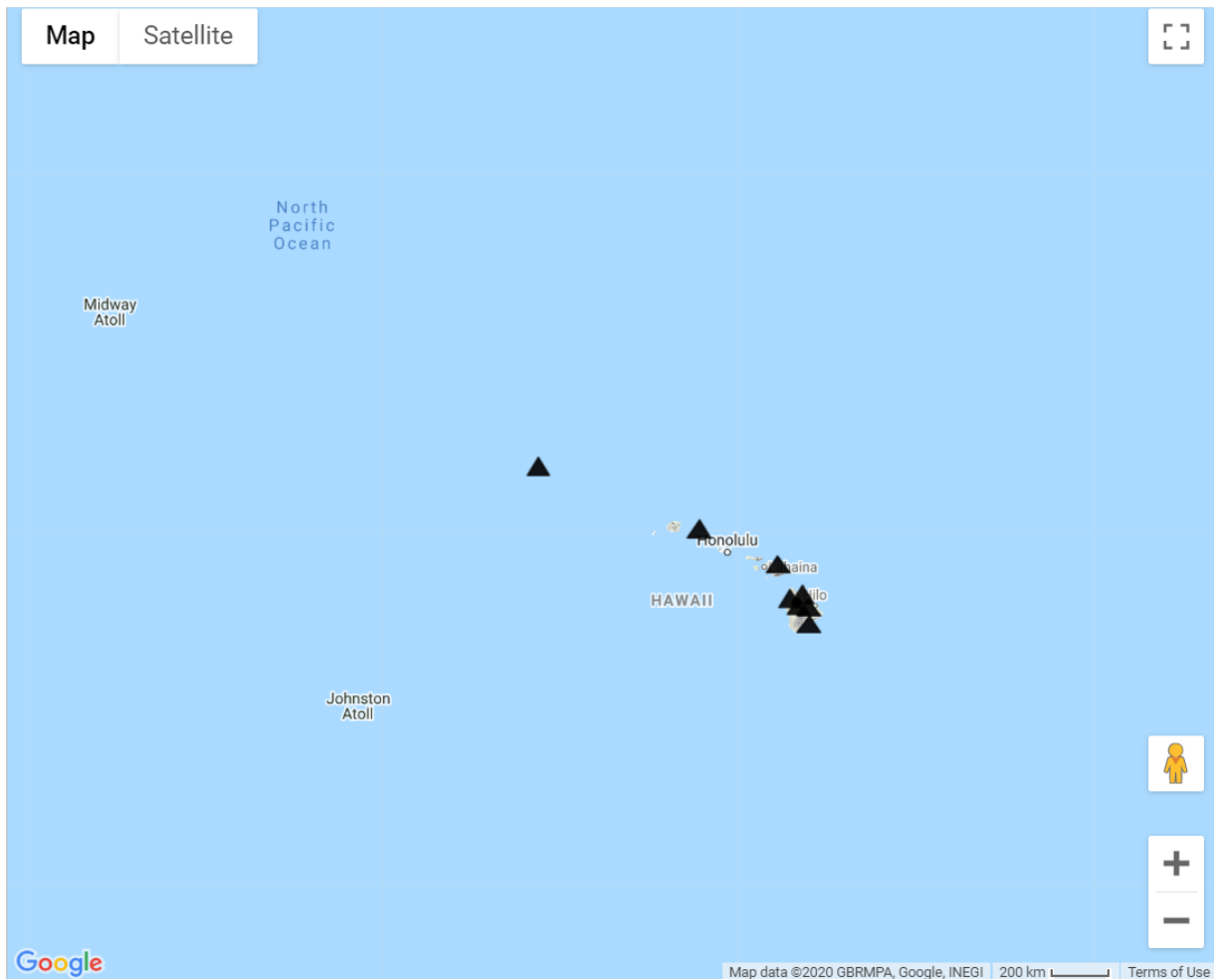


This map is credited from the following website: www.shadedrelief.com/hawaii/ .

Hawaii Topography



Hawaii Volcanoes



Symbols:



Volcanoes:

This map is credited from the following website:

<https://www.unavco.org/software/visualization/GPS-Velocity-Viewer/GPS-Velocity-View>