

North Atlantic_Earthquakes

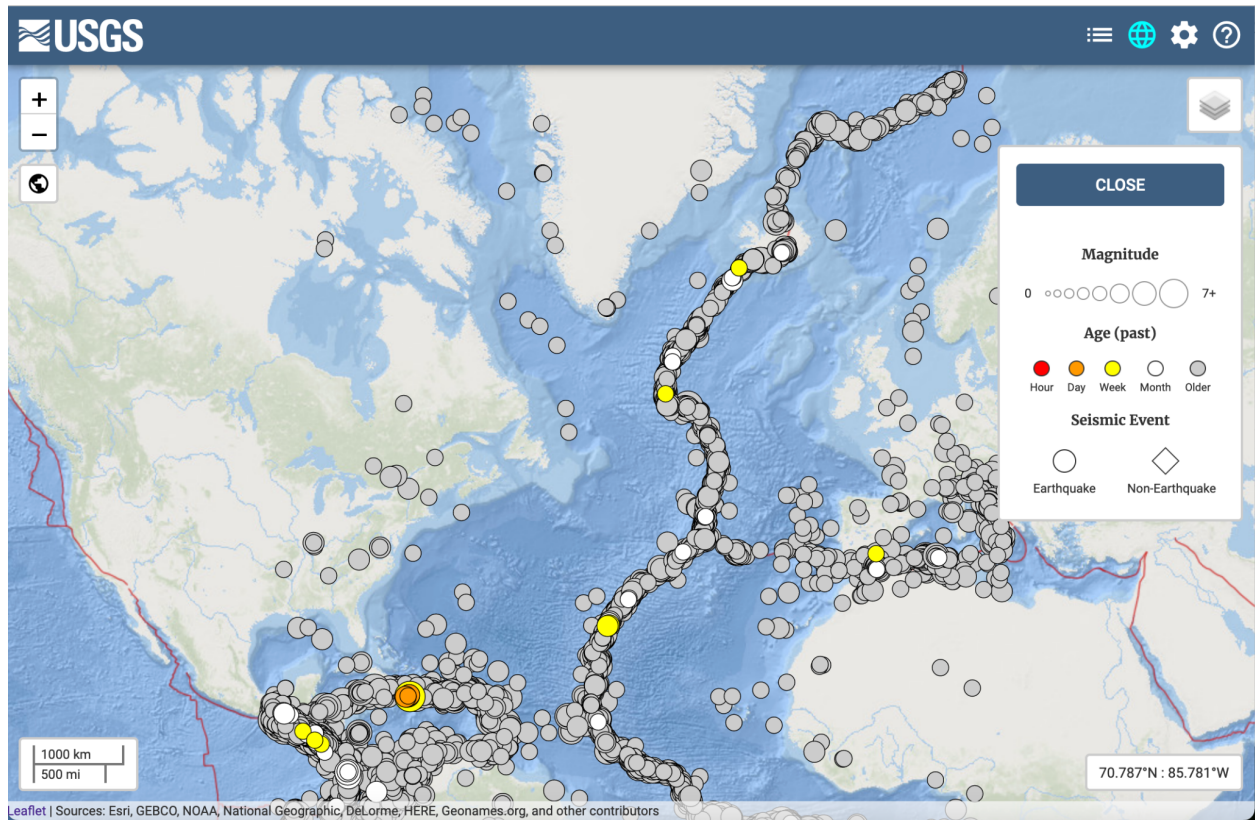
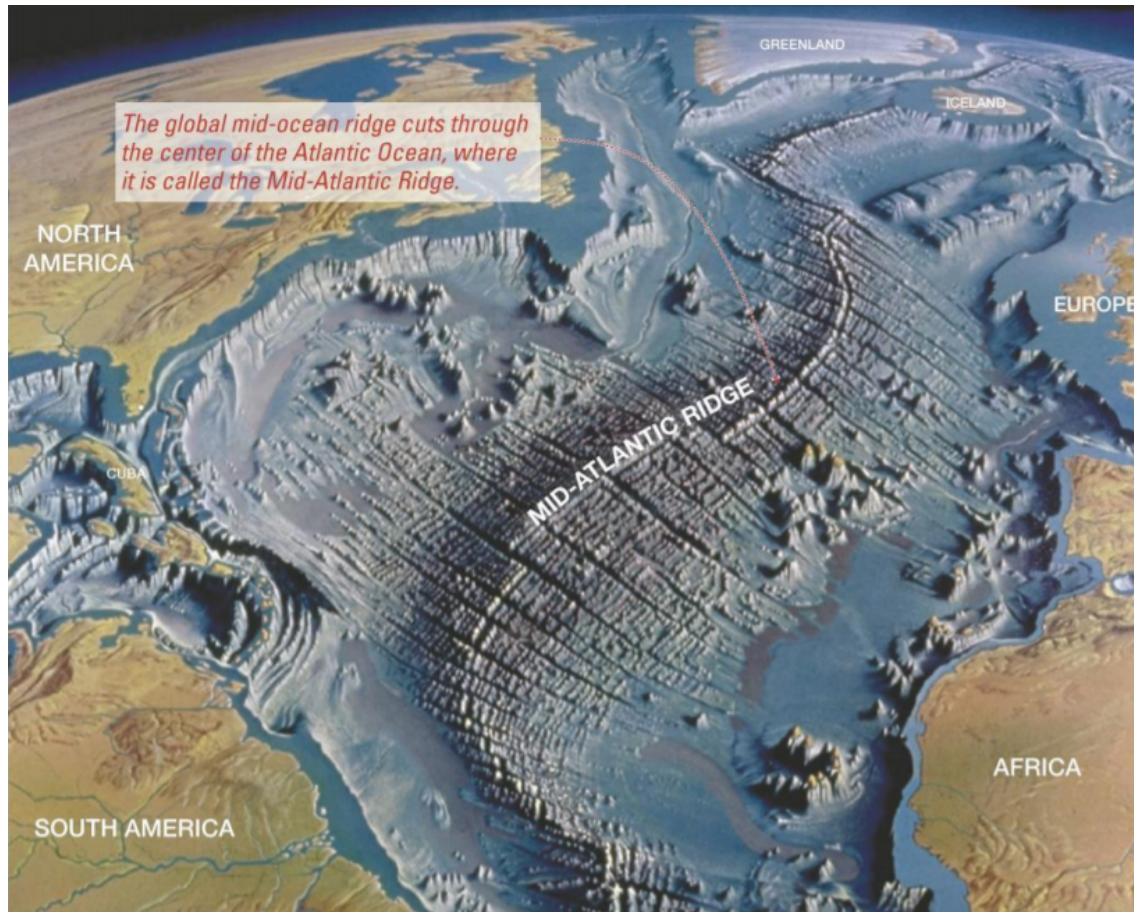


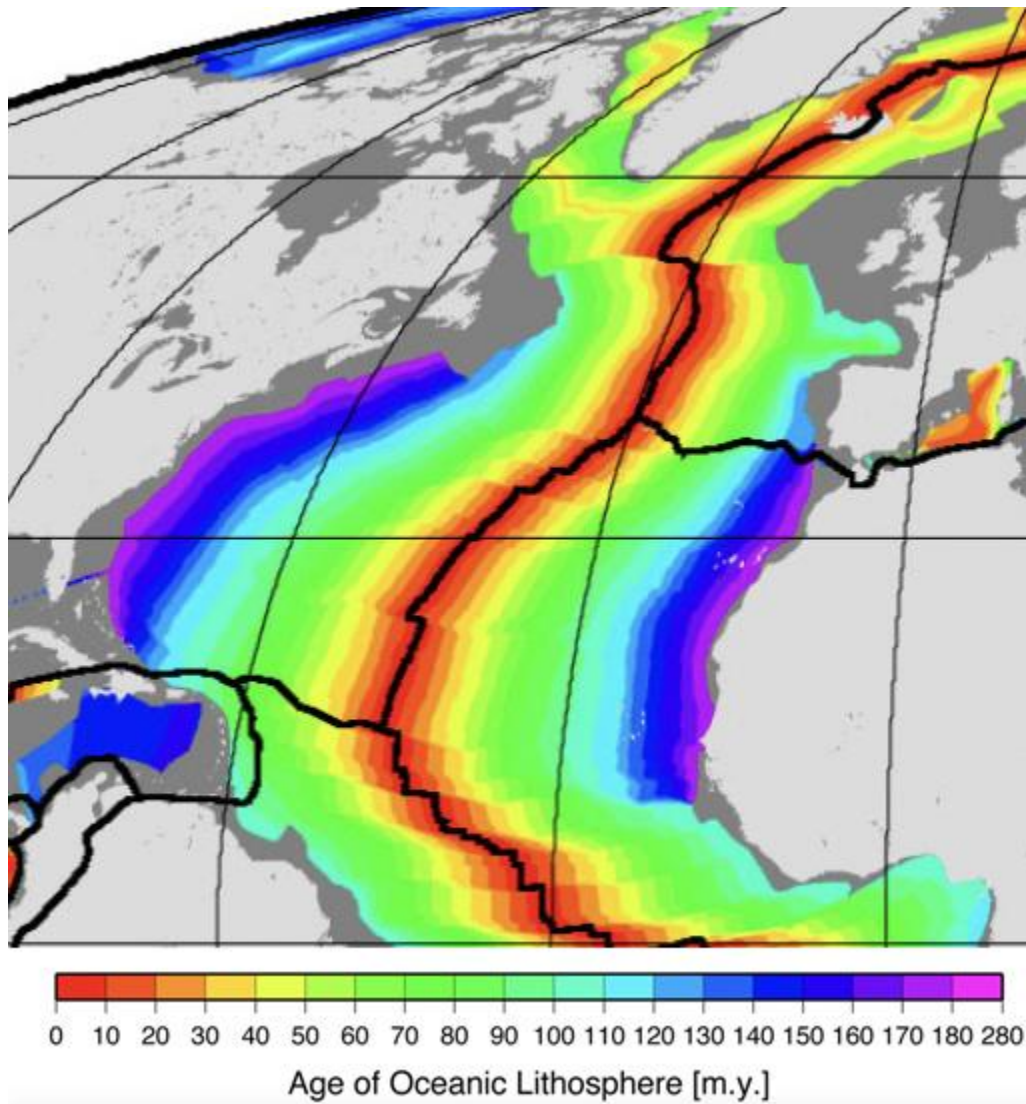
Image of the northern Atlantic Ocean showing the Mid-Atlantic Ridge and recorded seismic (earthquake) event locations. From 2000-2021, over 10,000 earthquakes ($M > 4.5$) were recorded, mostly along the Mid-Atlantic Ridge and along the subduction zone in the Caribbean (image from USGS search).

North Atlantic_Faults



This map was created by the National Geographic Society.

North Atlantic_Seaflor Age



This map is credited from NOAA: Müller, R.D., M. Sdrolias, C. Gaina, and W.R. Roest 2008. Age, spreading rates and spreading symmetry of the world's ocean crust, *Geochem. Geophys. Geosyst.*, 9, Q04006, [doi:10.1029/2007GC001743](https://doi.org/10.1029/2007GC001743).

North Atlantic_topo

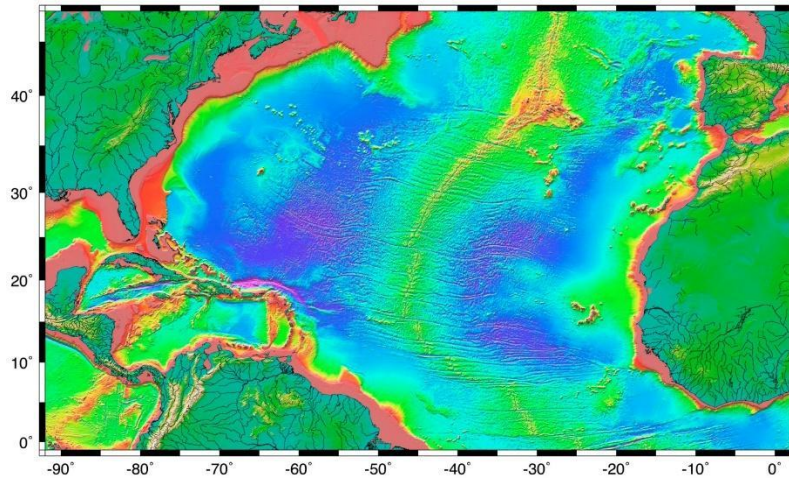


Figure 18.2 The topography of the Atlantic Ocean sea floor between 0° and 50° north. Red and yellow colours indicate less than 2,000 m depth; green less than 3,000 m; blue 4,000 m to 5,000 m; and purple greater than 6,000 m. [from NASA/CNES at: http://topex.ucsd.edu/marine_topo/jpg_images/topo8.jpg]

North Atlantic_Volcanoes_



This map is credited from the website:
<https://www.unavco.org/software/visualization/GPS-Velocity-Viewer/GPS-Velocity-Viewer.html>