

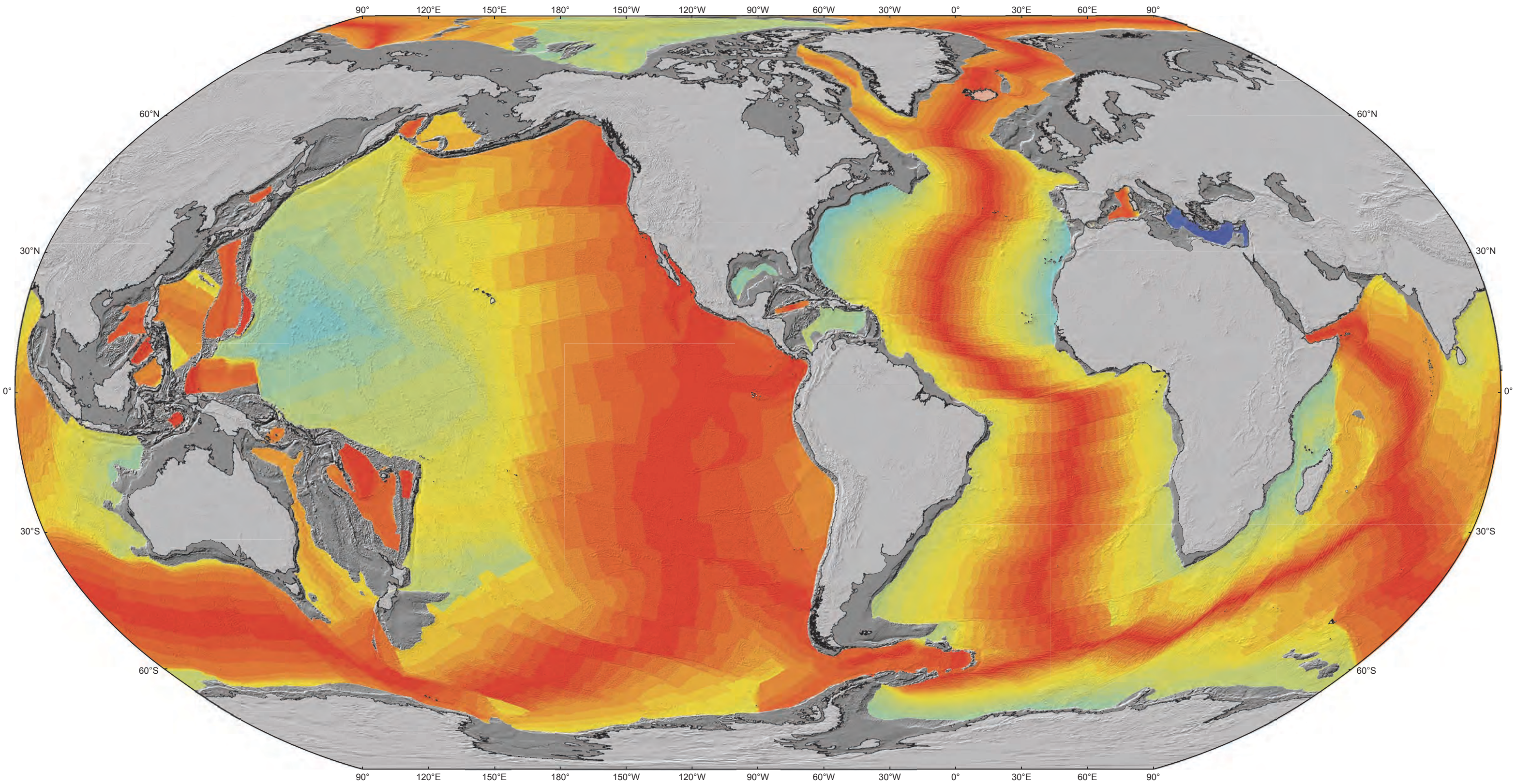
Map A

Earthquake depth (km)

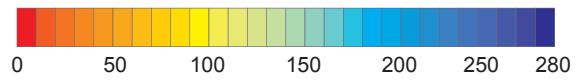
- All earthquakes $M \geq 4.0$
- 0 – 12
 - 13 – 33
 - 34 – 70
 - 71 – 120
 - 121 – 200
 - 201 – 400
 - > 400

Data from the ANSS composite catalog

Earthquakes



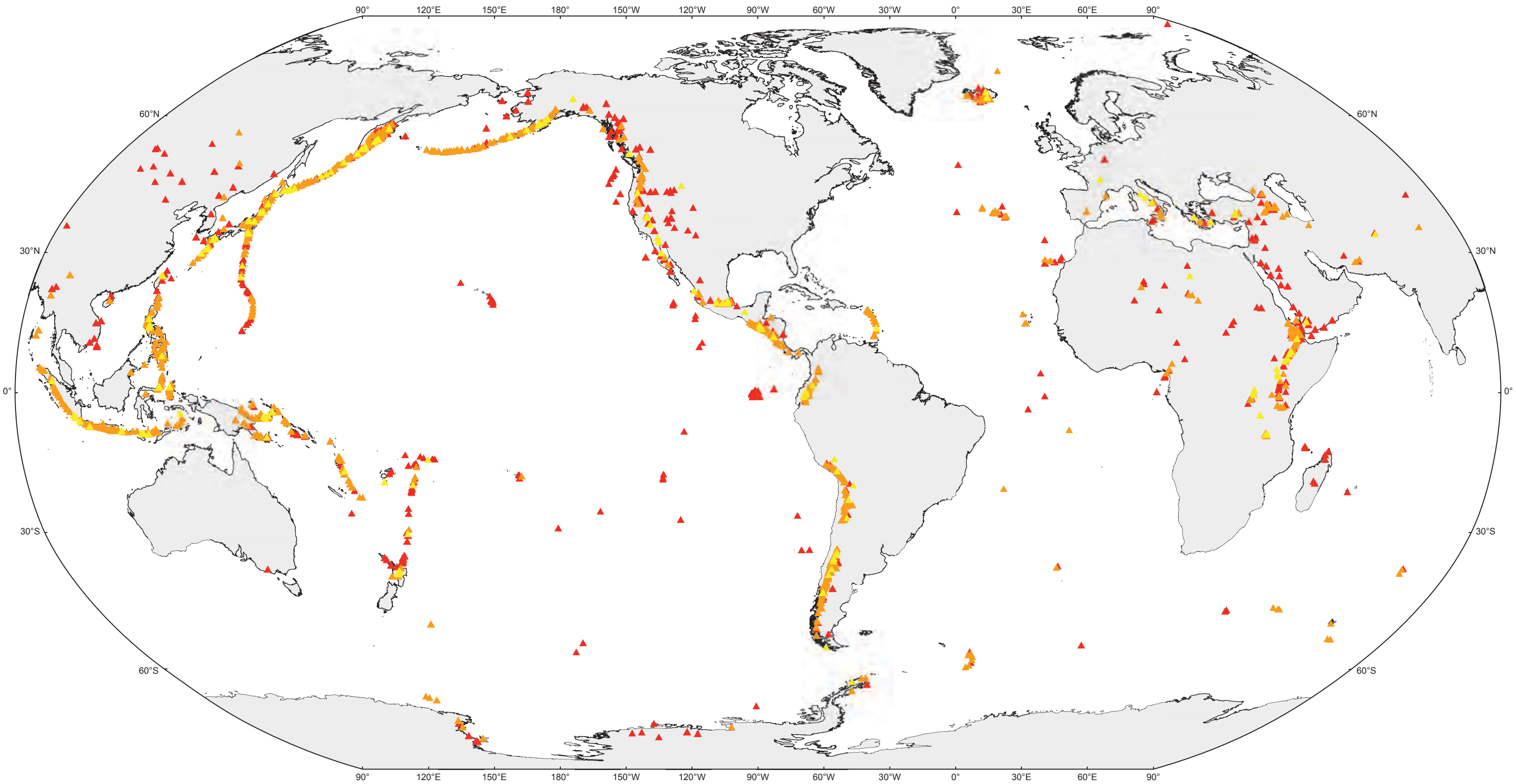
Crustal age (in millions of years)



Data from the National Environmental Information Centers at NOAA

Age of the Ocean Crust

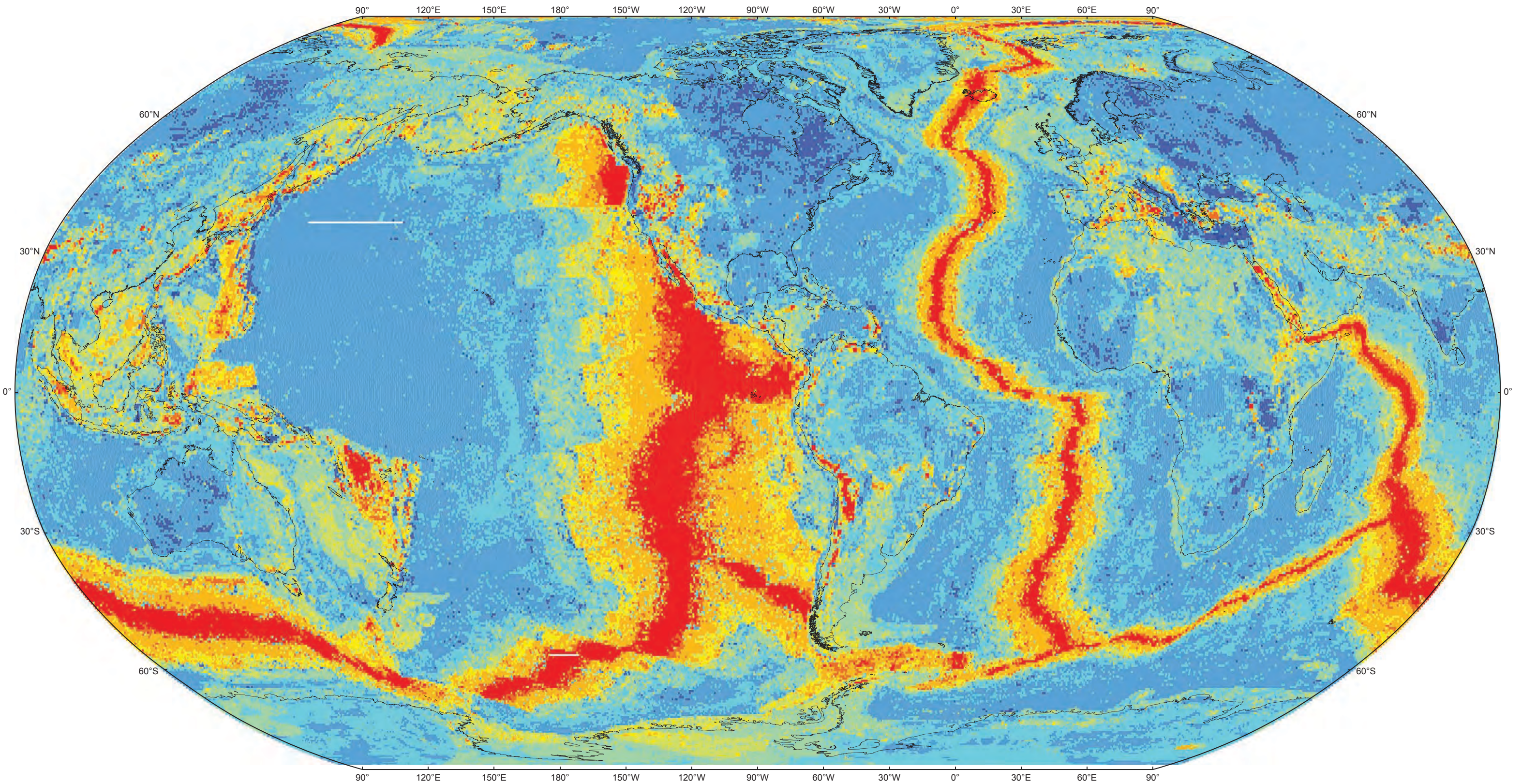
Map B



Types of volcanoes
Active = erupted in the last 10,000 yrs
 ▲ Calderas, lava domes
 ▲ Stratovolcanoes, compound volcanoes
 ▲ Shield volcanoes, fissure vents, submarine volcanoes
 Data from the Smithsonian Institution, Global Volcanism Program

Active volcanoes

Map C

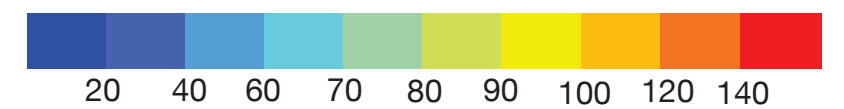


Heat flow

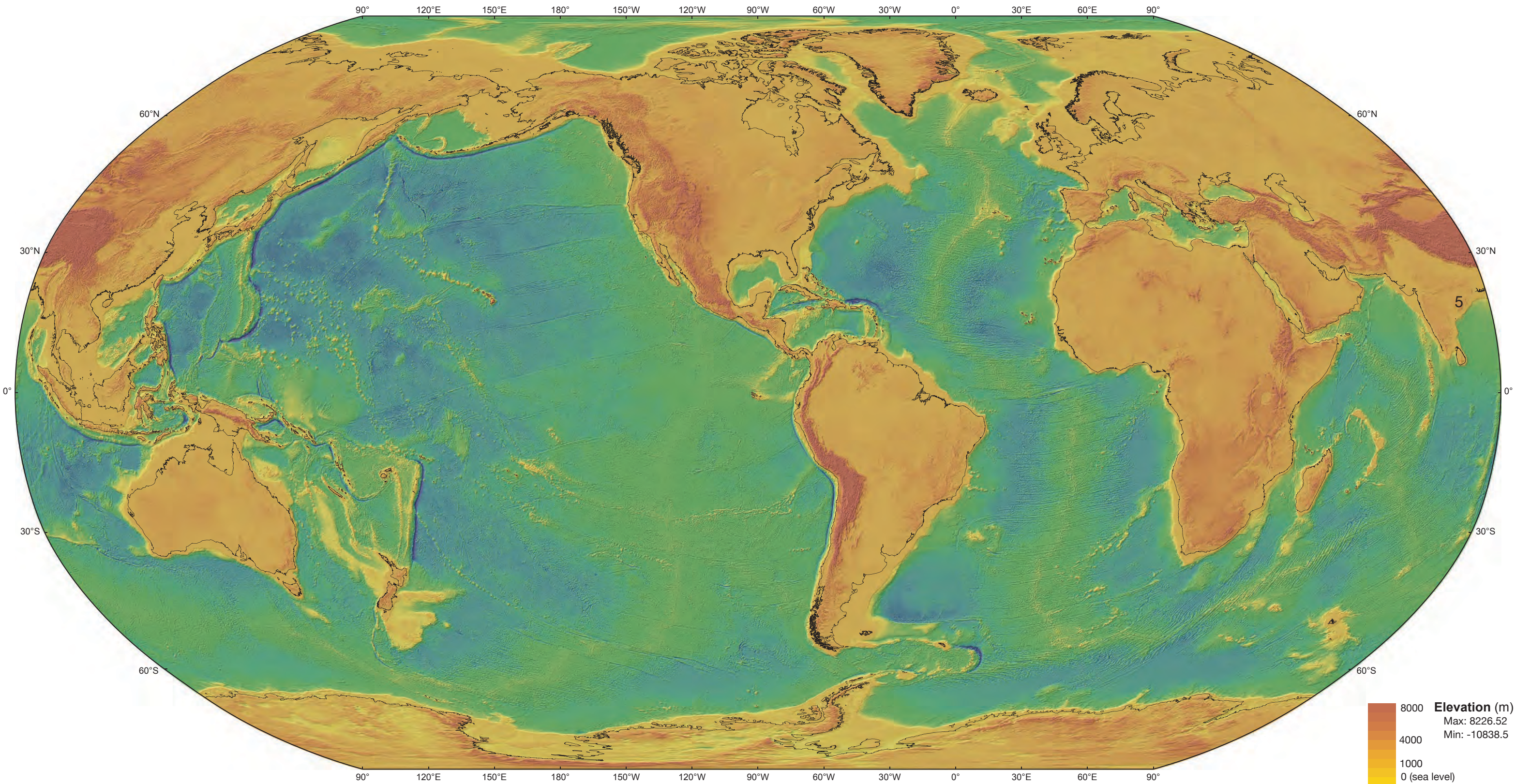
This map shows the predicted heat flow from Earth's interior based on surface measurements combined with 14 other observable features.

Data from Lucazeau, 2019

Heat flow (mW/m^2)

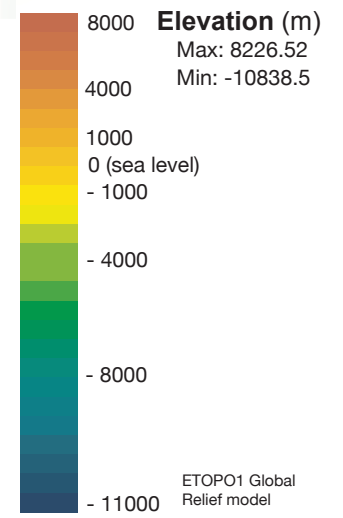


Map D



Map E

Topography and Bathymetry



Modified from Anne E. Egger, 2017

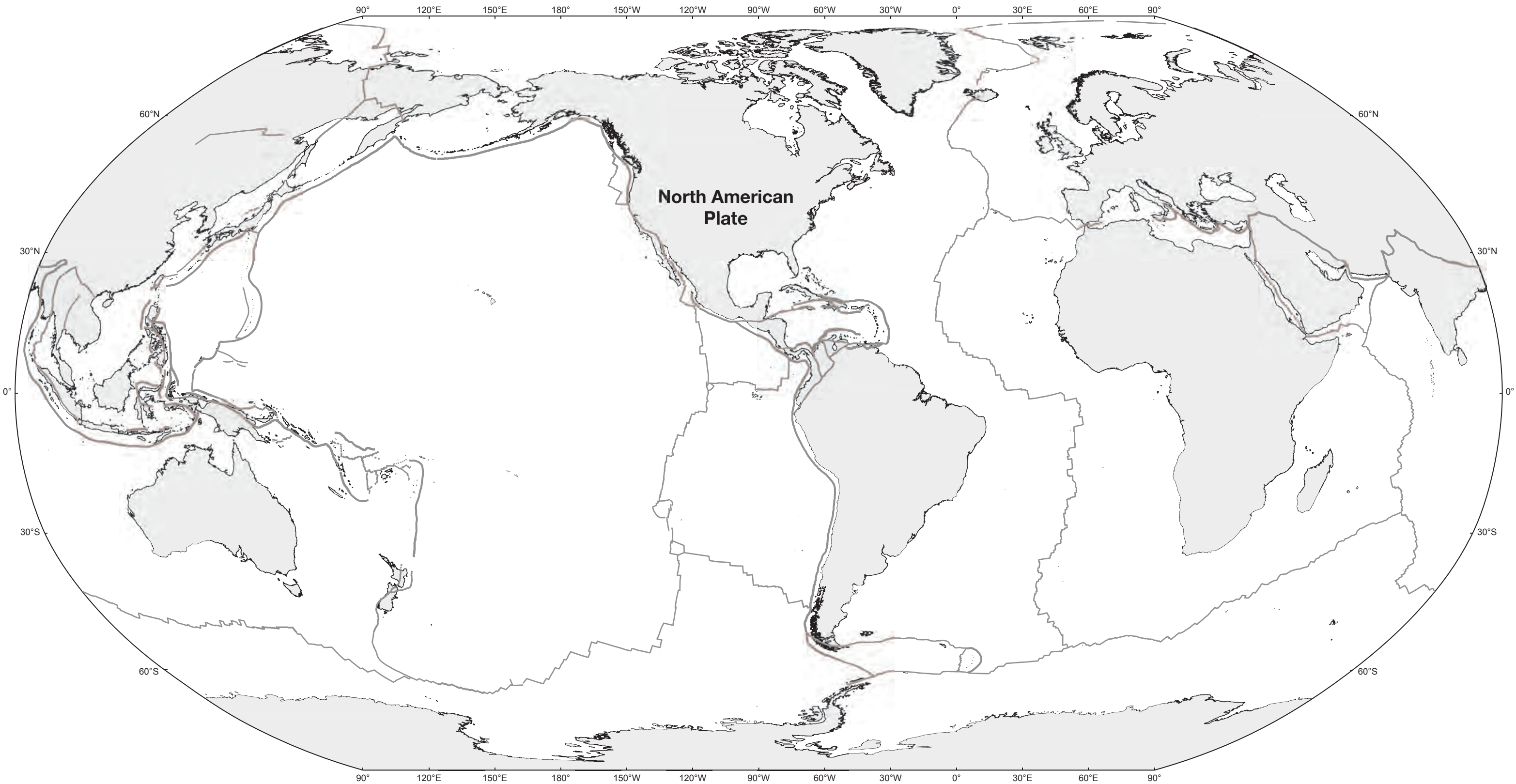


Plate boundaries

Plate boundaries



Data from the US Geological Survey

Map F