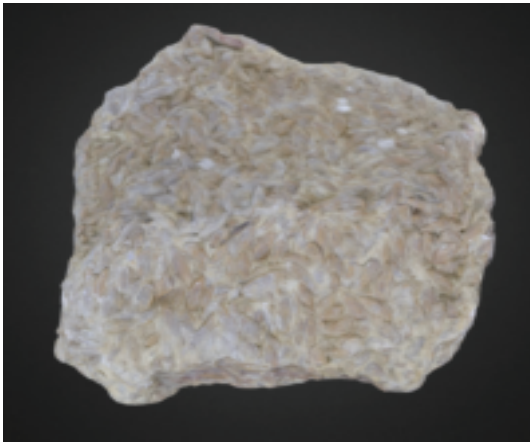
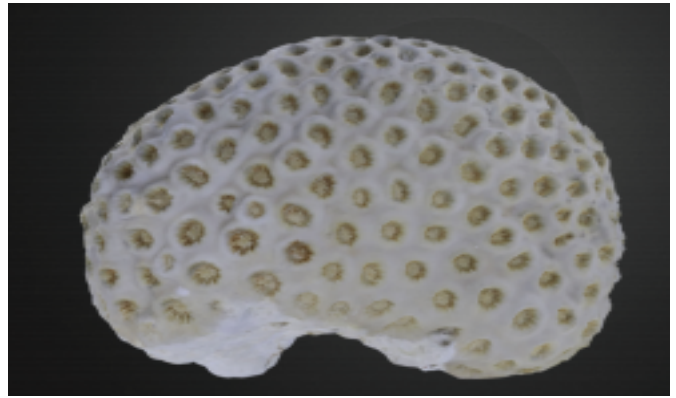


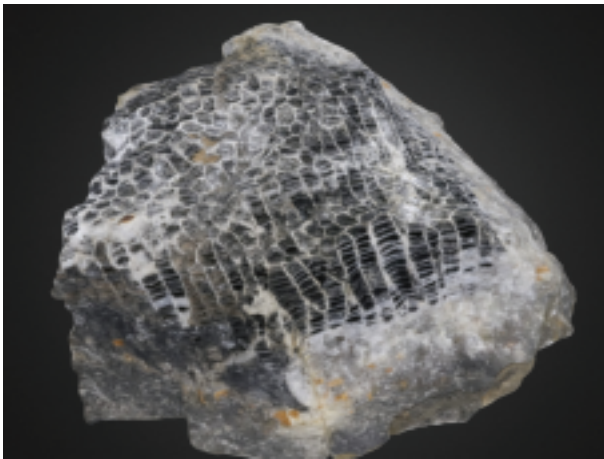
Fossils from the Digital Atlas Virtual Collection



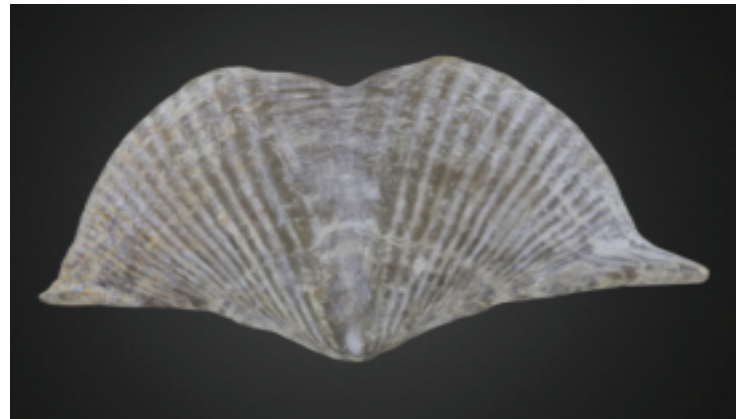
FUSULINIDAE (FORAMINIFERA) - Numerous specimens of *Fusulina* sp.; Longest dimension of rock is ~9 cm. Marine.



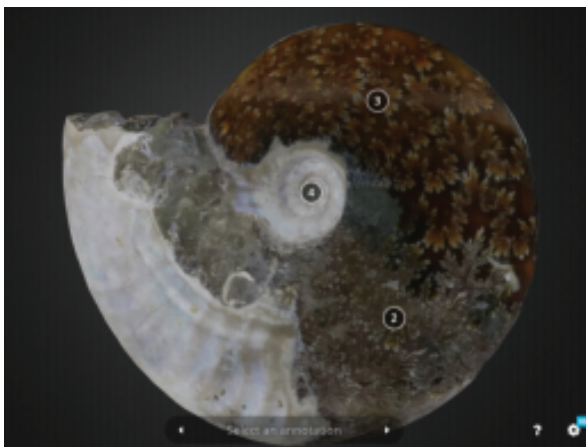
SCLERACTINIA CORAL - Modern *Montastraea cavernosa*; Maximum dimension is ~11 cm. Marine.



TABULATA CORAL - Fossil specimen of *Emmonsia emmonsii*; Longest dimension of specimen is ~8.5 cm. Marine.



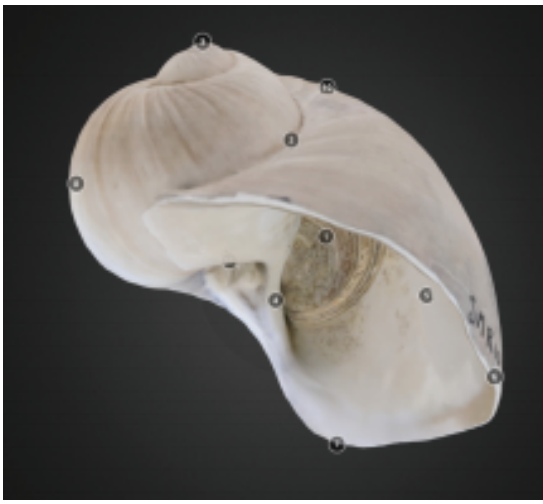
BRACHIOPODA - Fossil specimen of *Spinocyrtia iowensis*; Longest dimension of specimen is ~7cm. Marine.



AMMONOIDEA - Fossil specimen of *Cleonicerus besairiei*; Maximum diameter of specimen is ~12 cm. Marine. For numeric label information see descriptions on the descriptions and links page.



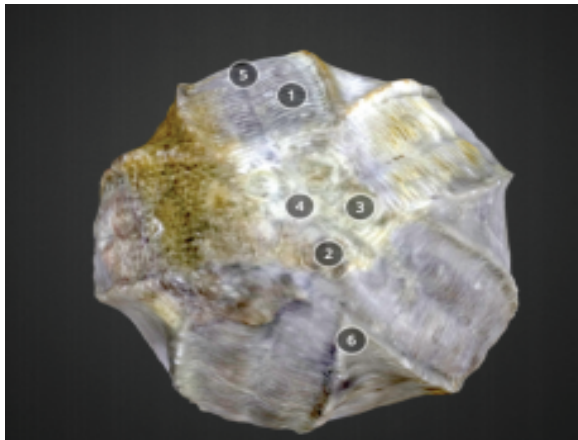
PELECYPODA (a.k.a. BIVALVIA) - Model of a fossil *Anadara lienosa*; Width of specimen is ~11.5 cm. Marine.



GASTROPODA - Fossil specimen of *Naticarius plicantella*; Length of specimen is ~3.5 cm. Marine. For numeric label information see descriptions on the descriptions and links page.



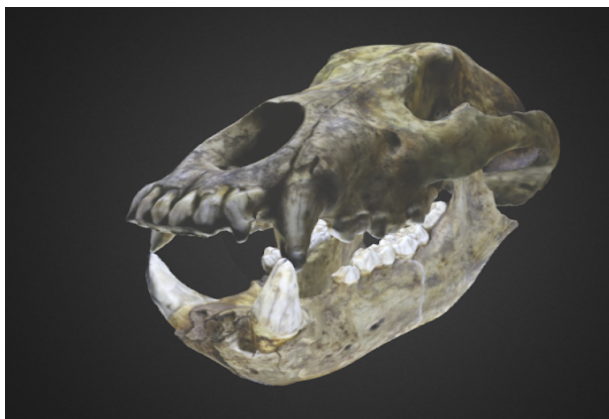
TRILOBITA - Fossil specimen of *Eldredgeops rana*; Trilobite is ~3 cm in length. Marine.



BLASTOIDEA - Fossil specimen of *Pentremites godani*; Specimen is ~2 cm in length. Marine. For numeric label information see descriptions on the descriptions and links page.



TYRANNOSAURIDAE (DINOSAURIA) - Tyrannosaurus rex skull. Terrestrial.



MAMMALIA - Cave bear (*Ursus spelaeus*) skull. Terrestrial.

This PDF includes screenshots of the Digital Atlas of Ancient Life (www.digitalatlasofancientlife.org/). All students are strongly encouraged to explore the fossils in Virtual Reality through the links in the next pages. Links are provided for both the Digital Atlas of Ancient Life and Sketchfab.

Each model is licensed under a Creative Commons Attribution -ShareAlike 4.0 International License.

Links and Descriptions for Fossils in Digital Atlas of Ancient Life Virtual Collection

PDF attachment includes screenshots of the collection, although all students are strongly encouraged to explore the fossils in Virtual Reality through the links below.

FUSULINIDAE (FORAMINIFERA) – Example: Numerous specimens of the fusulinid foraminiferan *Fusulina sp.* from the Pennsylvanian Graham Fm. of Coleman County, Texas (PRI 49886). Specimen is on display at the Museum of the Earth, Ithaca, New York. Longest dimension of rock is approximately 9 cm.

<https://www.digitalatlasofancientlife.org/vc/foraminifera/>

<https://sketchfab.com/3d-models/foraminifera-fusulina-sp-pri-49886-960ac3f9ee754d3a889ad9579c922ff7>

SCLERACTINIA CORAL – Example: Modern specimen of the Scleractinian coral *Montastraea cavernosa* from off Monroe County, Florida (PRI 13355). Specimen is from the collections of the Paleontological Research Institution, Ithaca, New York. Maximum dimension of specimen is approximately 11 cm.

<https://www.digitalatlasofancientlife.org/vc/cnidaria/anthozoa/scleractinia/>

<https://sketchfab.com/3d-models/coral-montastrea-cavernosa-pri-13355-682099ca1ccb4e15bc881f2fbfb2a83a>

TABULATA CORAL – Example: Fossil specimen of the tabulate coral *Emmonsia emmonsii* from the Devonian Onondaga Limestone of Genesee County, New York (PRI 76736). Specimen from the collections of the Paleontological Research Institution, Ithaca, New York. Longest dimension of specimen is approximately 8.5 cm.

<https://www.digitalatlasofancientlife.org/vc/cnidaria/anthozoa/tabulata/>

<https://sketchfab.com/3d-models/emmonsia-emmonsii-pri-76736-b12bd868a34e4b38adcab46a15311f17>

BRACHIOPODA – Example: Fossil specimen of the brachiopod *Spinocyrtia iowensis* from the Devonian of Benton County, Iowa (PRI 70766). Specimen is from the collections of the Paleontological Research Institution, Ithaca, New York. Longest dimension of specimen is approximately 7 cm.

<https://www.digitalatlasofancientlife.org/vc/brachiopoda/rhynchonellata/>

<https://sketchfab.com/3d-models/brachiopod-spinocyrtia-iowensis-pri-70766-1c18d985532246fcacac07437dbc4b70>

AMMONOIDEA – Example: Fossil specimen of the ammonoid cephalopod *Cleoniceras besairiei* from the Cretaceous period. Specimen is from the collections of the Paleontological Research Institution, Ithaca, New York. Maximum diameter of specimen is approximately 12 cm. Labels: 1 - Original Shell, 2 - Ammonite Suture, 3 - Umbilicus, 4 - Artificially Polished Surface.

<https://www.digitalatlasofancientlife.org/vc/mollusca/cephalopoda/>

<https://sketchfab.com/3d-models/cephalopod-cleoniceras-besairiei-a478a7dd64cc43b4a542b1923c45e374>

PELECYPODA (a.k.a. BIVALVIA) – Example: Animated model of a fossil specimen of the bivalve *Anadara lienosa* from the Pliocene Tamiami Formation (Pinecrest Beds) of Sarasota County, Florida (PRI 70070). Specimen is from the collections of the Paleontological Research Institution, Ithaca, New York. Width of specimen is approximately 11.5 cm.

<https://www.digitalatlasofancientlife.org/vc/mollusca/bivalvia/pteriomorphia/>

<https://sketchfab.com/3d-models/bivalve-anadara-lienosa-pri-70070-6487e861290247fe9ec4fb3ad70f0a0a>

GASTROPODA – Example: Fossil specimen of the gastropod *Naticarius plicatella* from the Pliocene Pinecrest Beds of Sarasota County, Florida (PRI 70745). Specimen is from the collections of the Paleontological Research Institution, Ithaca, New York (PRI 70745). Length of specimen is approximately 3.5 cm. Note that operculum (trap door) is remarkably preserved *in situ*. Labels: 1 - Operculum, 2 - Suture, 3 - Apex, 4 - Columella, 5 - Aperture, 6 - Lip, 7 - Anterior, 8 - Body Whorl, 9 - Body Whorl (Dorsal), 10 - Growth Line, 11 - Umbilicus

<https://www.digitalatlasofancientlife.org/vc/mollusca/gastropoda/>

<https://sketchfab.com/3d-models/gastropod-naticarius-plicatella-pri-70745-dbcab7f7cfc74efdb5cc74087ecd8301>

TRILOBITA – Example: Fossil specimen of the trilobite *Eldredgeops rana* from the Devonian Ludlowville Formation of Genesee County, New York (PRI 49811). Specimen is from the collections of the Paleontological Research Institution, Ithaca, New York. Trilobite is approximately 3 cm in length.

<https://www.digitalatlasofancientlife.org/vc/arthropoda/trilobita/>

<https://sketchfab.com/3d-models/trilobite-eldredgeops-rana-pri-49811-c8660b8b14364e1d9ff19372fd5fa052>

BLASTOIDEA – Example: Fossil specimen of the blastoid *Pentremites godani* from the Mississippian Paint Creek Formation of St. Clair County, Illinois (PRI 70771). Specimen is from the collections of the Paleontological Research Institution, Ithaca, New York. Specimen is approximately 2 cm in length. Labels: 1 - Amulacrum, 2 - Anus, 3 - Spiracle, 4 - Mouth, 5 - Food Groove, 6 - Deltoid Plate, 7 - Radial Plate, 8 - Basal Plate.

<https://www.digitalatlasofancientlife.org/vc/echinodermata/blastoidea/>

<https://sketchfab.com/3d-models/blastoid-pentremites-godani-pri-70771-d470399390d84c81ad409c4f33f21a24>

TYRANNOSAURIDAE (DINOSAURIA) – Example: *Tyrannosaurus rex* skull on display at the Museum of the Earth, Ithaca, New York.

<https://www.digitalatlasofancientlife.org/vc/chordata/dinosaurs-and-birds/>

<https://sketchfab.com/3d-models/vertebrate-tyrannosaurus-rex-skull-mote-cf48487de55d454b8adc92dce2840a0d>

MAMMALIA – Example cave bear (*Ursus spelaeus*) from the collections of the Paleontological Research Institution, Ithaca, New York (PRI 50009).

<https://www.digitalatlasofancientlife.org/vc/chordata/mammals/>

<https://sketchfab.com/3d-models/vertebrate-ursus-splaeus-pri-50009-3fb00c98c70845a9bb2d989d0656a8>

Each model is licensed under a Creative Commons Attribution-ShareAlike 4.0 International License.