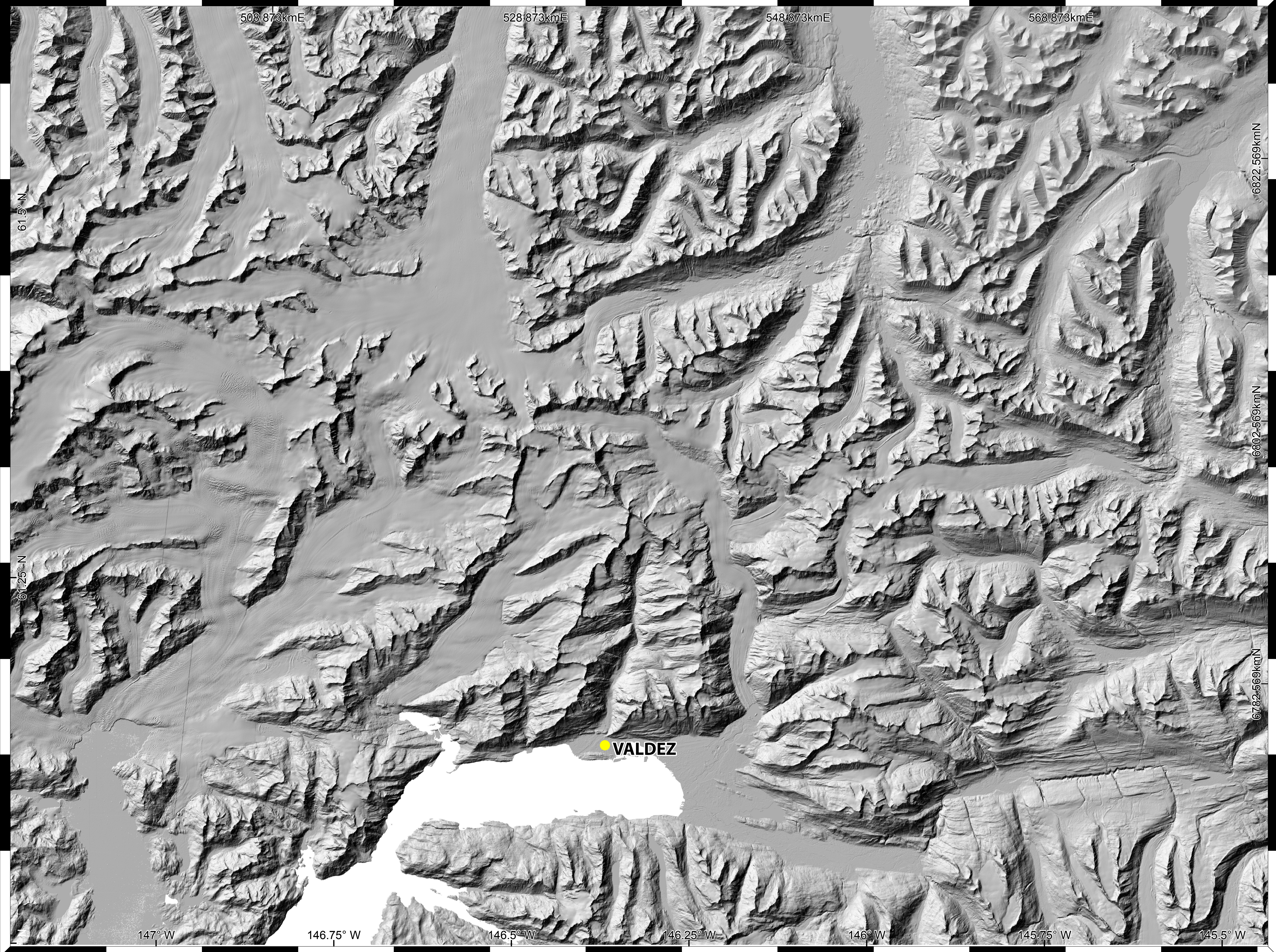



Prince William Sound Alaska Hillshade

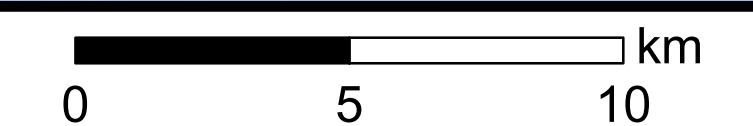
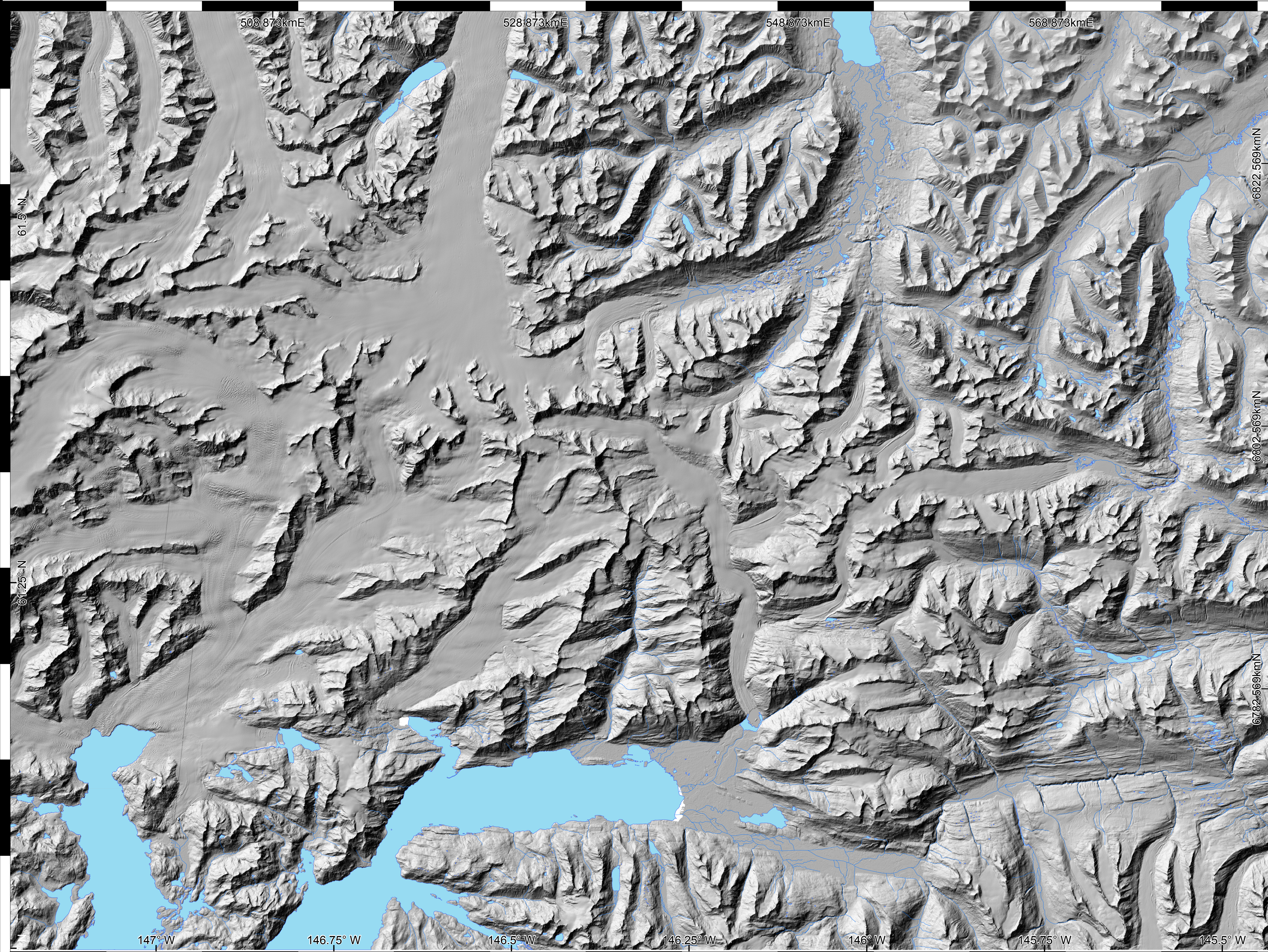


0 5 10 km

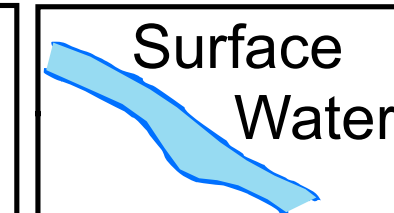
Sources:
Country and state boundaries provided by ESRI.
DEM data provided by the GINA.

1:138,000 

Prince William Sound Alaska Hillshade + Water



Sources:
Country and state boundaries
provided by ESRI.
Hydrologic data provided by the
USGS.
DEM data provided by the GINA.



1:138,000

Prince William Sound Alaska Aerial Imagery



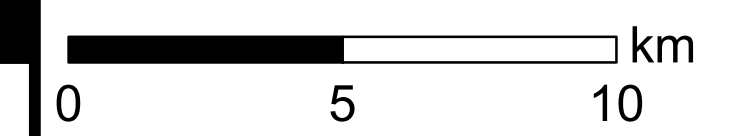
Sources:
Country and state boundaries
provided by ESRI.
DEM data provided by the GINA.
Imagery provided by ESRI.

1:138,000 

Prince William Sound Alaska Topography



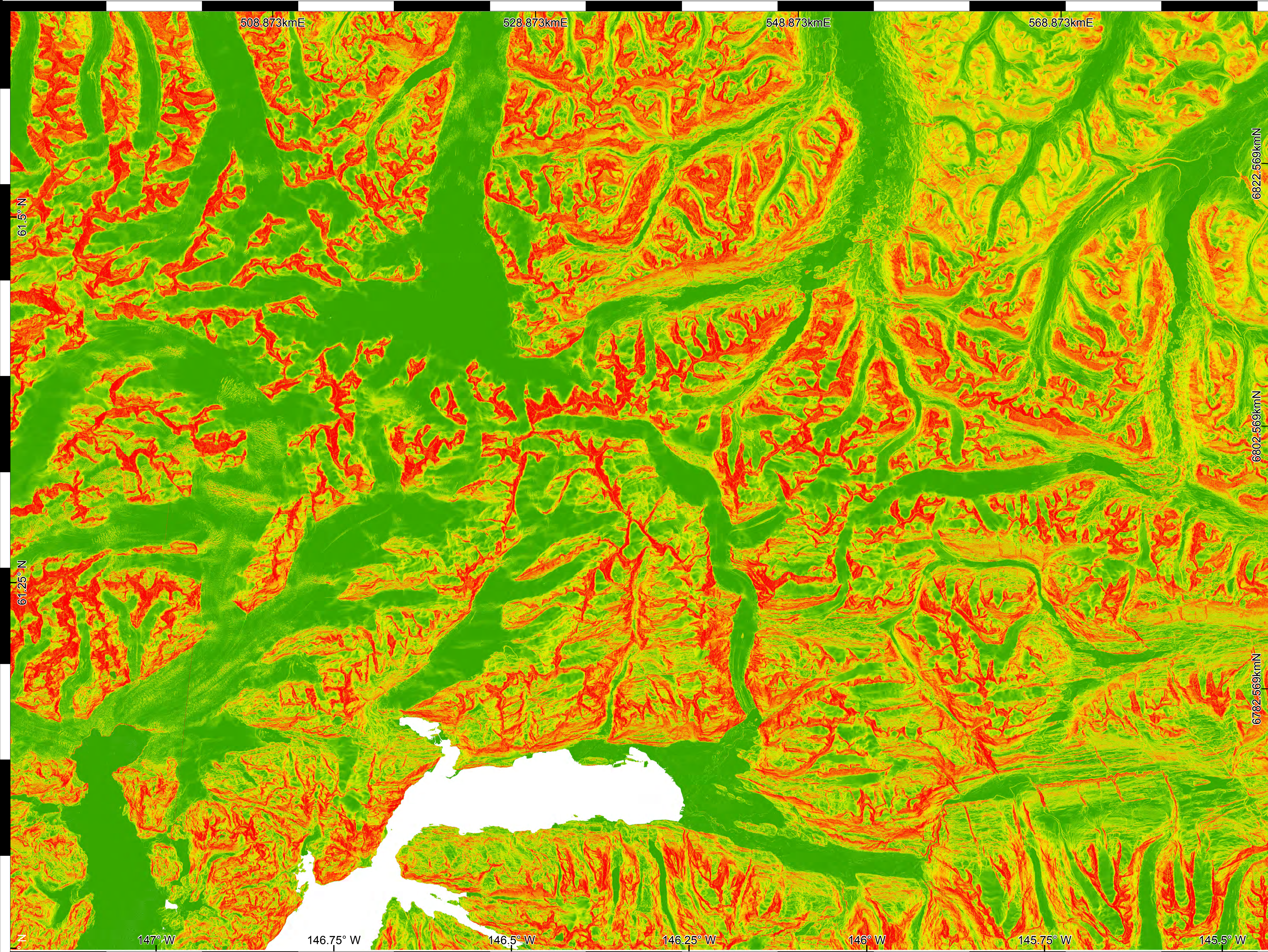
Contour Interval: 100 m



Sources:
Country and state boundaries
provided by ESRI.
All other data provided by the
USGS through ESRI.

1:138,000 

Prince William Sound Alaska Slope



0 5 10 km

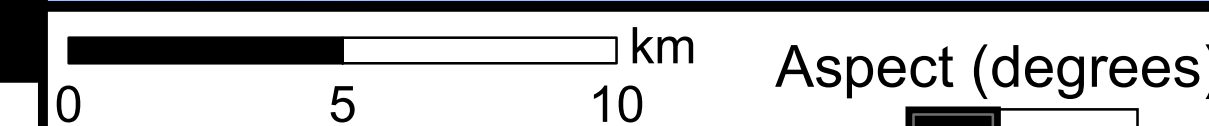
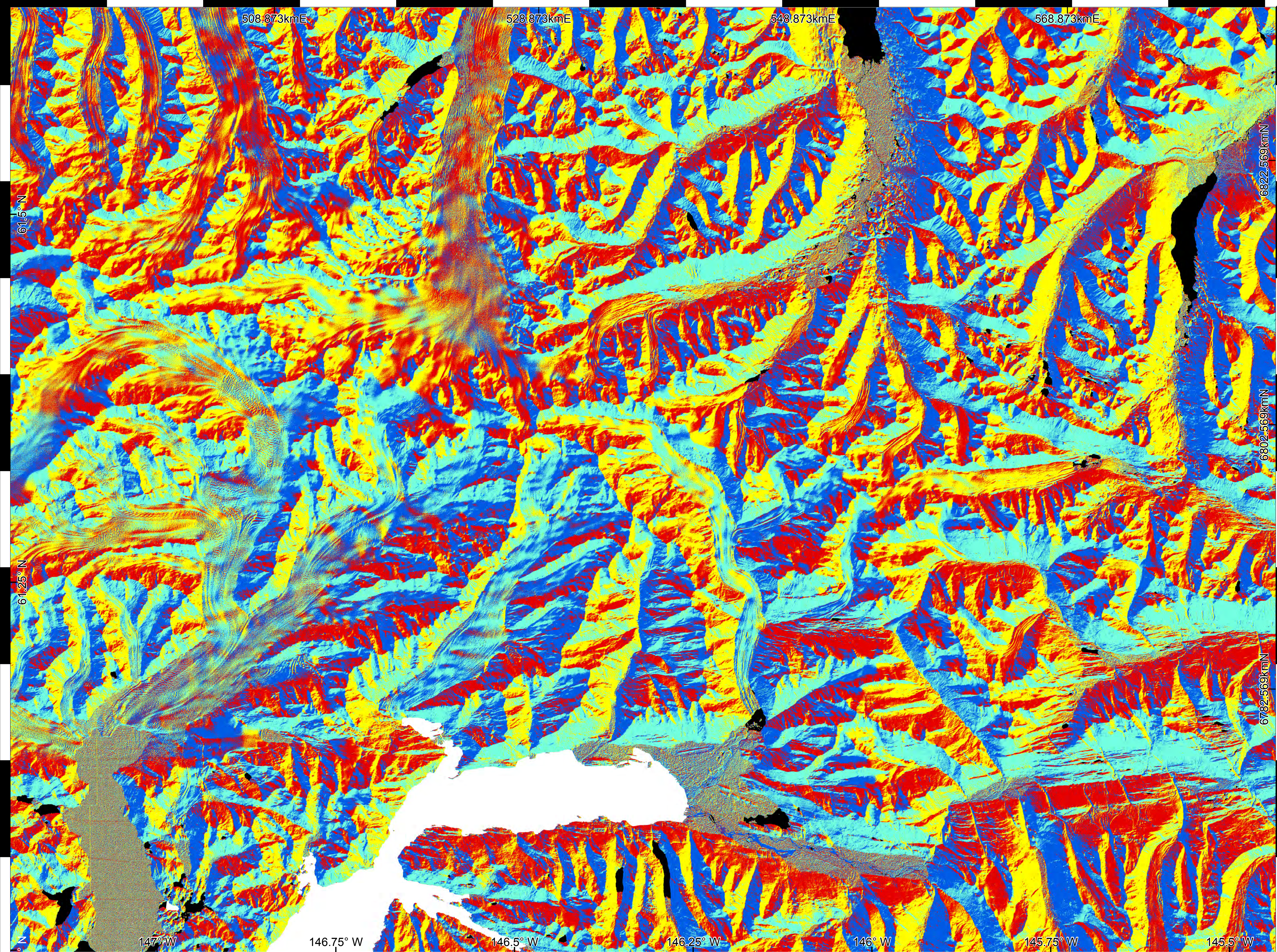
Sources:
Country and state boundaries provided by ESRI.
DEM data provided by the GINA.

Slope (degrees)

0° - 5°	25° - 30°
5° - 10°	30° - 35°
10° - 15°	35° - 40°
15° - 20°	40° - 45°
20° - 25°	45° - 84°

1:138,000

Prince William Sound Alaska Aspect



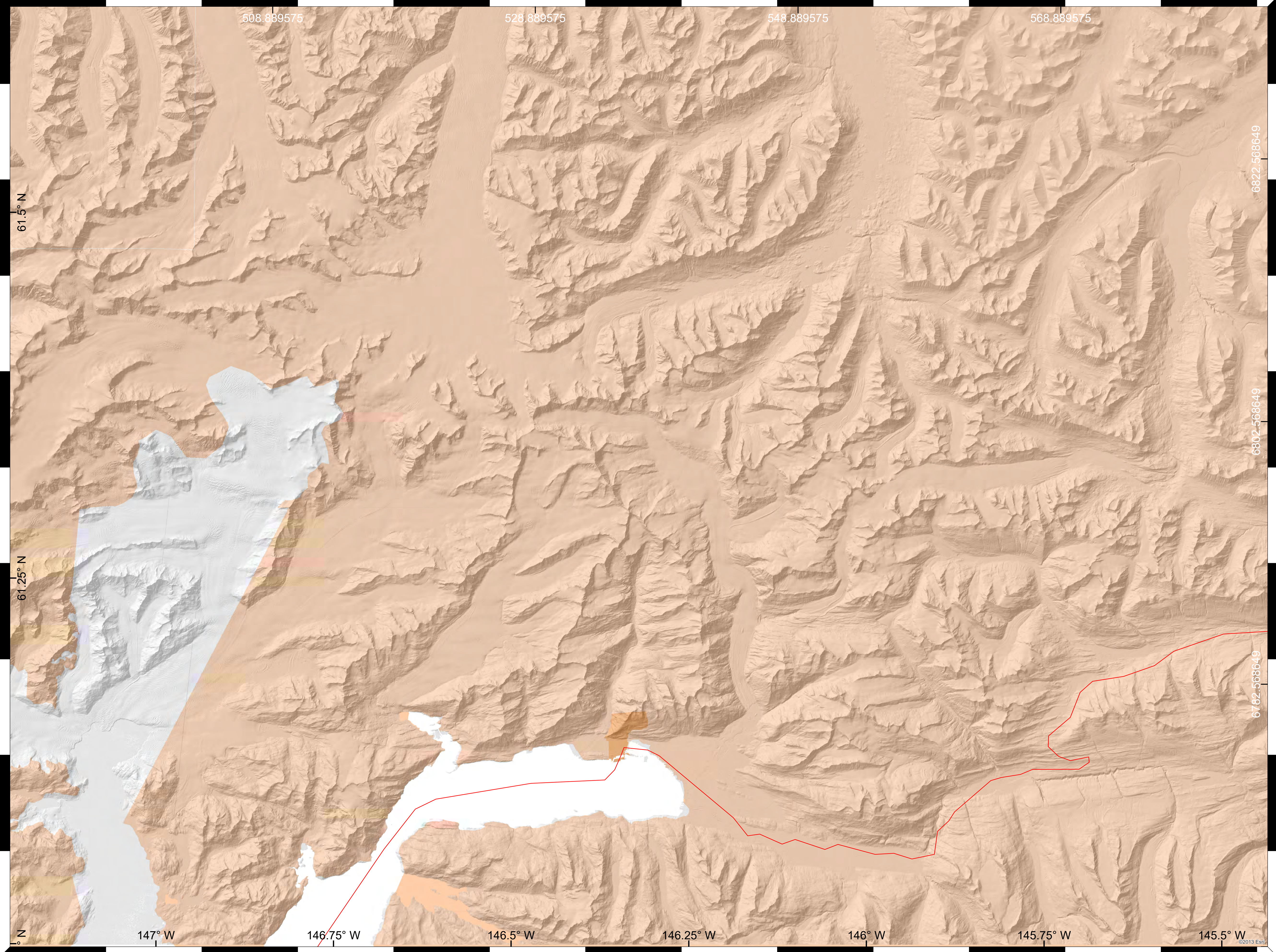
Sources:
Country and state boundaries provided by ESRI.
Hydrologic data provided by the USGS.
DEM data provided by the GINA.

Aspect (degrees)

Black	Flat
Red	315° - 45°
Yellow	45° - 135°
Cyan	135° - 225°
Blue	225° - 315°
Grey	No Data

1:138,000

Prince William Sound Alaska Population 2012

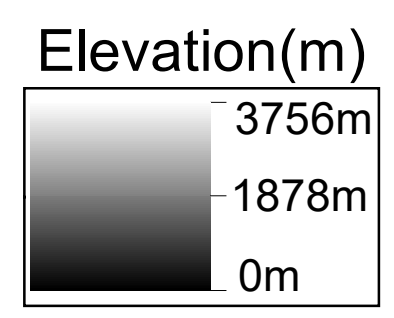
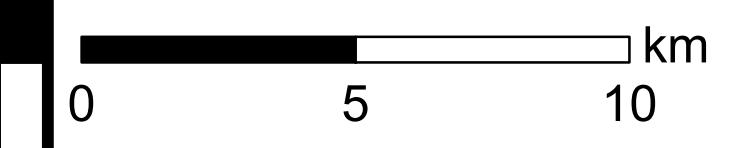


Legend

2012 Population Density (Pop per Square Mile) (Esri)

- 100,001 or more people
- 25,001 to 100,000 people
- 10,001 to 25,000 people
- 1,001 to 10,000 people
- 101 to 1,000 people
- 100 or less people
- No population
- Roads

Population Density data provided by ESRI

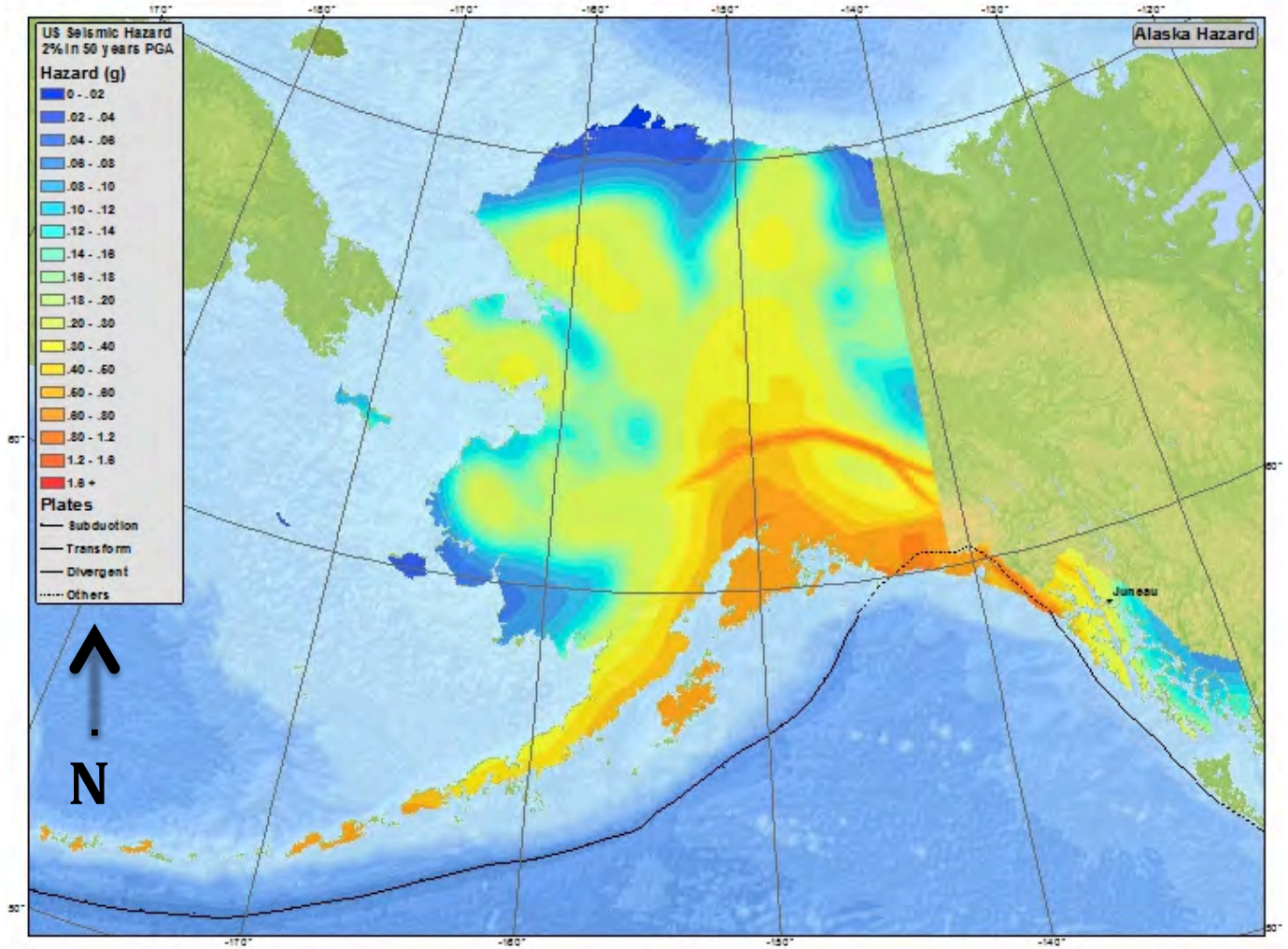


Sources:
Country and state boundaries provided by ESRI.
SRTM DEM data provided by OpenTopography.

1:138,000

Alaska

2014 Seismic Hazard Map



Seismic Hazards Map of AK state from the USGS Earthquake Hazards Program website: <http://earthquake.usgs.gov/earthquakes/states/alaska/hazards.php>