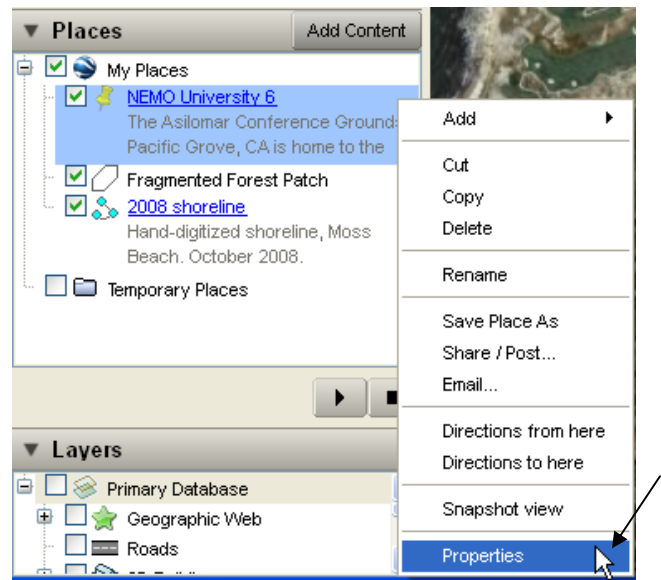


6. Editing a Feature

Congratulations! You have created a point, line and polygon feature inside Google Earth. The tough part is done. However, you may find that you wish to make a change the location, shape, description or style of an existing feature. It's very easy to update features in Google Earth.

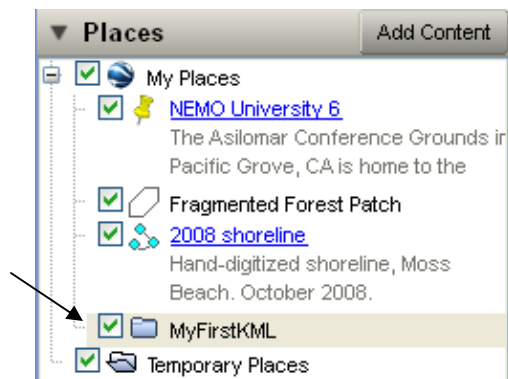
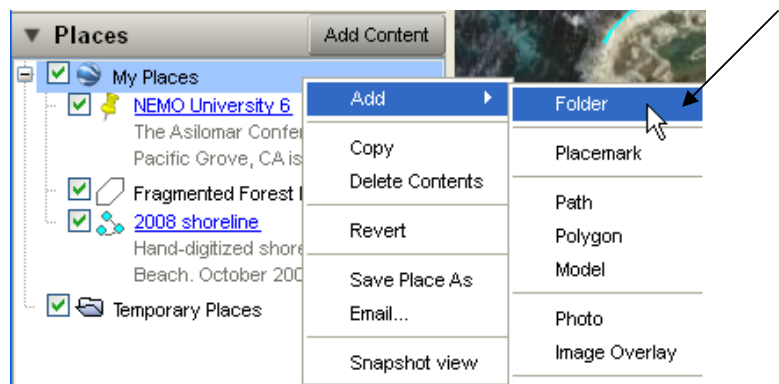
To edit a feature, **right-click** on the placemark, path or polygon in the **Places** window and select **Properties** from the menu that appears. This will open the **Properties** window that you worked with when you created the feature. You will also notice that the geographic properties of the feature (the location of the point or the vertices of the path and polygon) are able to be edited in the map. Make any changes you wish and then click **OK** in the **Properties** window to save your edits.



7. Save Your Features to KML

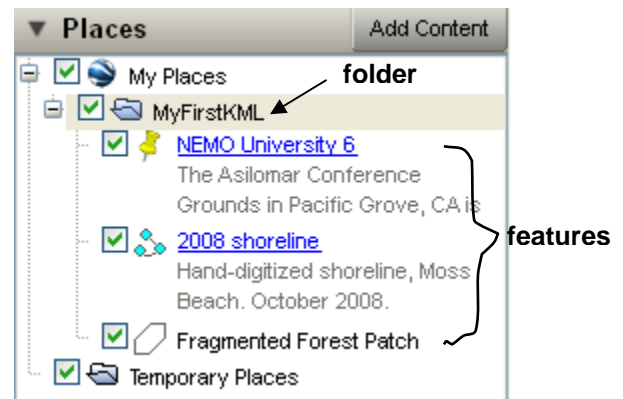
Data that you create within Google Earth can be saved to KML or KMZ (compressed KML). Individual features can be saved in separate files or together within the same file. In order to save all three features together within the same file, first we will create a folder and then place all three features within that folder. The folder will then be saved to a KML file.

Right-click on **My Places** under the **Places** window. Select **Add > Folder** from the window that appears. Name the folder, "MyFirstKML" and click **OK**. A folder will be added to the bottom of your **My Places** list.

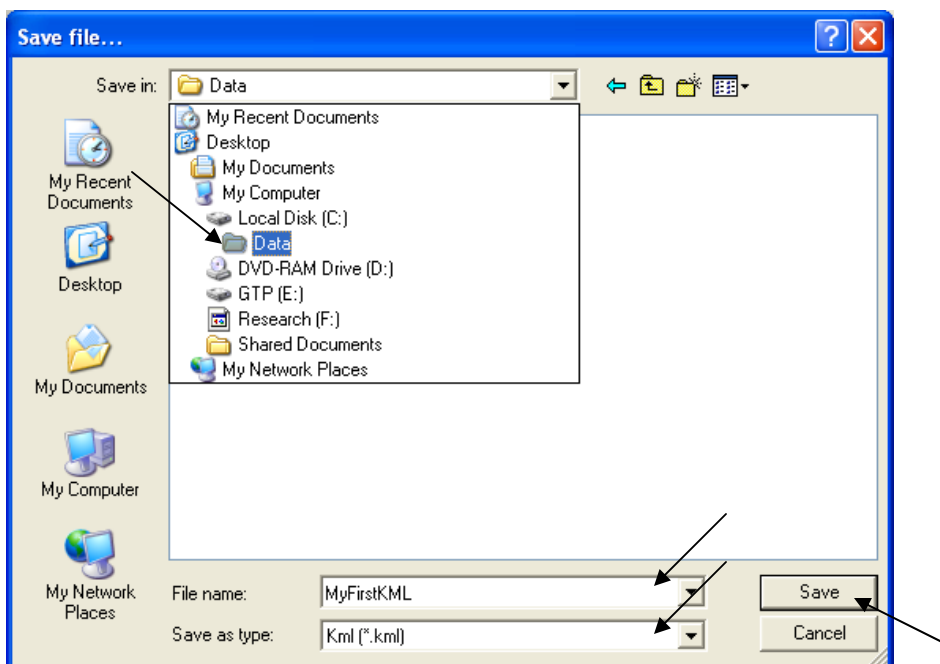
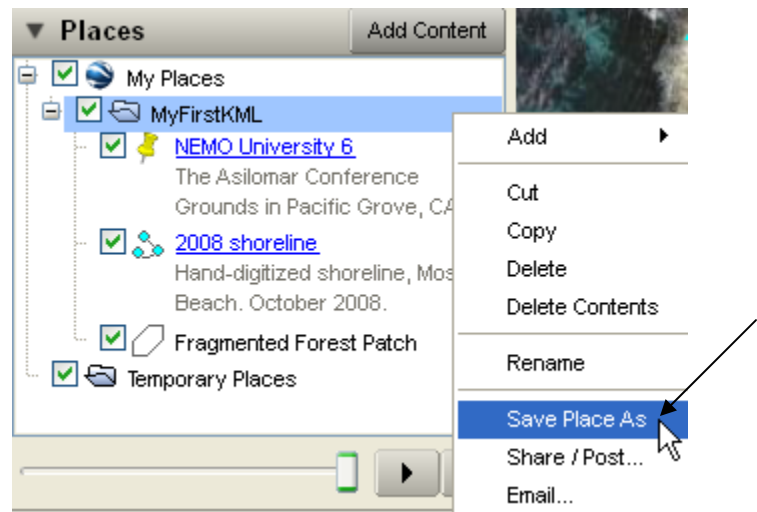


Putting Maps, Images and Data on the Web

Click on each of your placemarks (**NEMO University 6**, **Fragmented Forest Patch**, **2008 shoreline**) in the Places window and **drag and drop** them into your **MyFirstKML** folder under the My Places heading. All of your features should now be contained within the folder.




To save all of your features to the same KML, **right-click** on the **MyFirstKML** folder and select **Save Place As** in the menu that appears.



Navigate to your **C:\Data** folder on your hard drive and verify that your file name is **MyFirstKML** and the **Save as type** is **Kml (*.kml)**. Click **Save**.

7. Verify Your Data

Remove the folder **MyFirstKML** from your **MyPlaces** by right-clicking it and selecting **Delete**. Choose **OK** in the window that opens asking if you are sure you wish to delete the folder and all its descendants. The folder will be removed from your Google Earth session. **Close** Google Earth by click on the **red X**  in the upper right corner of the window.

Open **My Computer** on your desktop or use the **Windows Explore** function (right-click on the start menu, select Explore) to view your computer's file system. Browse to your **C:\Data** folder. You should see your new KML, titled "**MyFirstKML.kml**" in this folder. **Double-click** on it.

This will prompt Google Earth to open and fly to the location of the features that are described in the KML. Pretty awesome – you did that all yourself!

