

FINDING GIS DATA FOR THE CLASSROOM

Shannon H. White, PhD
University of Missouri



OVERVIEW

- ❖ Searching for Data
- ❖ Bringing in Internet Data
- ❖ Finding World, National and Local Data



SEARCHING FOR DATA

- * Simplicity can yield results
- * Search terms:
 - * gis data gisdata
 - * gis data + *your topic*
 - * *file type (i.e. .shp .eoo dem txt xls)*

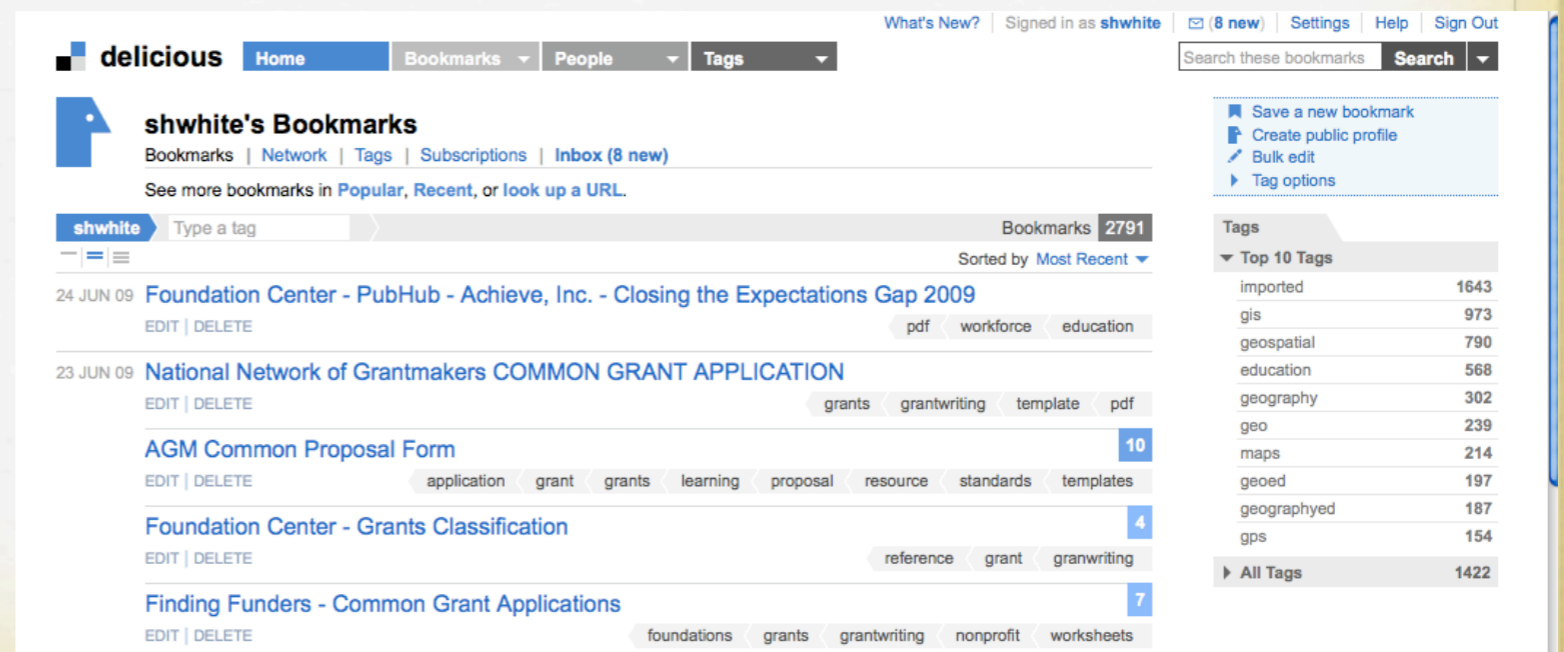
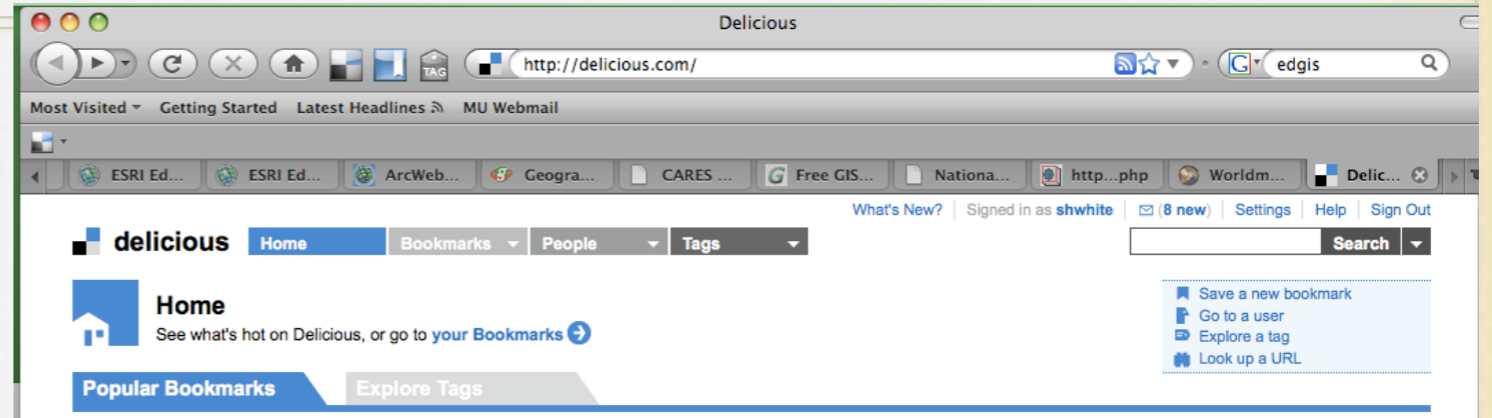
The Google logo, featuring the word "Google" in its characteristic multi-colored font (blue, red, yellow, blue, green, red).The YAHOO! logo, with the word "YAHOO!" in a bold, red, sans-serif font.The bing logo, with the word "bing" in a blue, lowercase, sans-serif font.The Ask logo, featuring the word "Ask" in white, bold, sans-serif font inside a red oval.The altavista logo, featuring a stylized red "A" above the word "altavista" in a blue, lowercase, sans-serif font.The dögpile logo, with the word "dögpile" in white, lowercase, sans-serif font on a blue rectangular background.

FINDING DATA ON DELICIOUS

❁ Delicious Social
Bookmarking
<http://delicious.com>

❁ My Delicious Account
[http://delicious.com/
shwhite](http://delicious.com/shwhite)

❁ Examples of terms to
search:GIS, gisdata,
gis_data

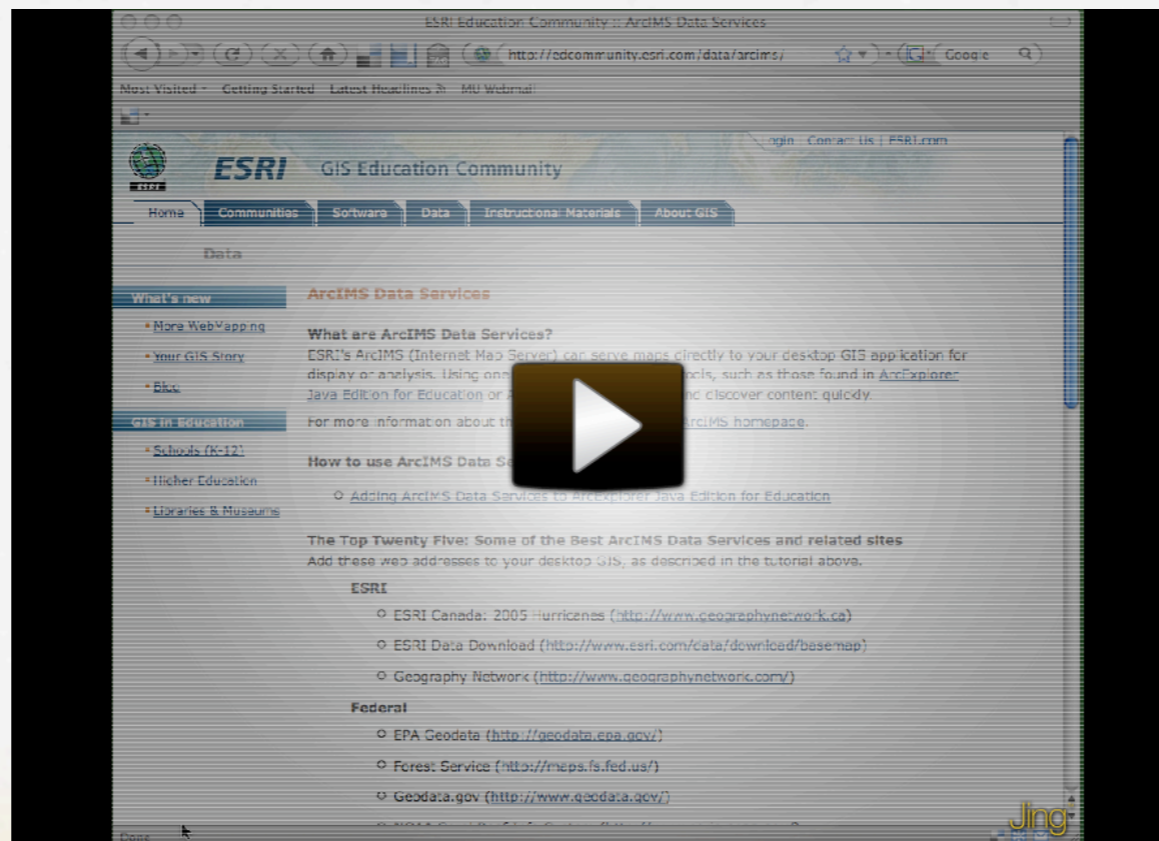


ADD ARCIMS DATA

❖ ArcIMS Data (Internet Mapping Services)

❖ Adding an IMS to AEJEE

<http://edcommunity.esri.com/data/arcims/tutorial/>



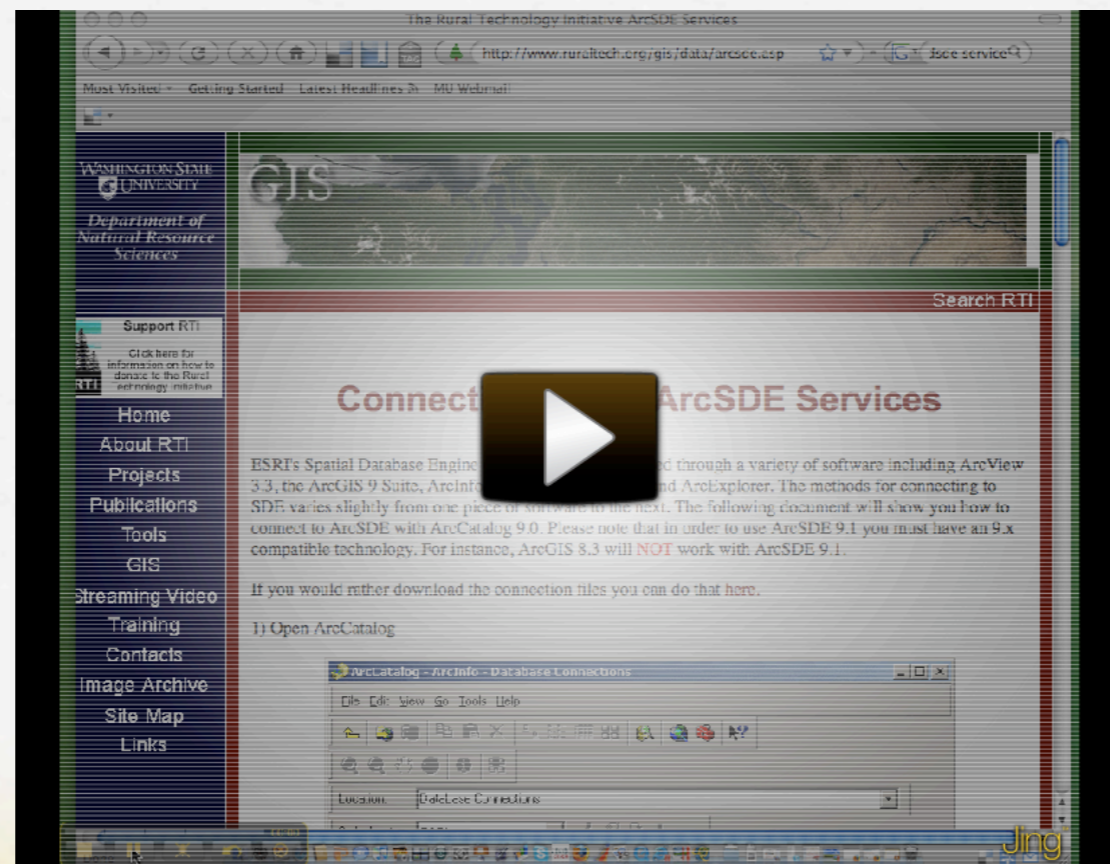
Movie above will open to http://geospatial.missouri.edu/media/AEJEE_ArcIMS.swf

ADD SDE DATA

❁ SDE Data (Spatial Database Engines)

❁ Adding SDE data to AEJEE

<http://www.mapteach.org/tutorials/AddArcSDE.php>



Movie above will open to http://geospatial.missouri.edu/media/AEJEE_ArcSDE.swf

THE BIG GIS DATA LOCATIONS

❁ Geography Network
(<http://geographynetwork.com>)

❁ GIS Data Depot
(<http://data.geocomm.com/>)

❁ Geospatial OneStop (US Govt data)
<http://gos2.geodata.gov/wps/portal/gos>

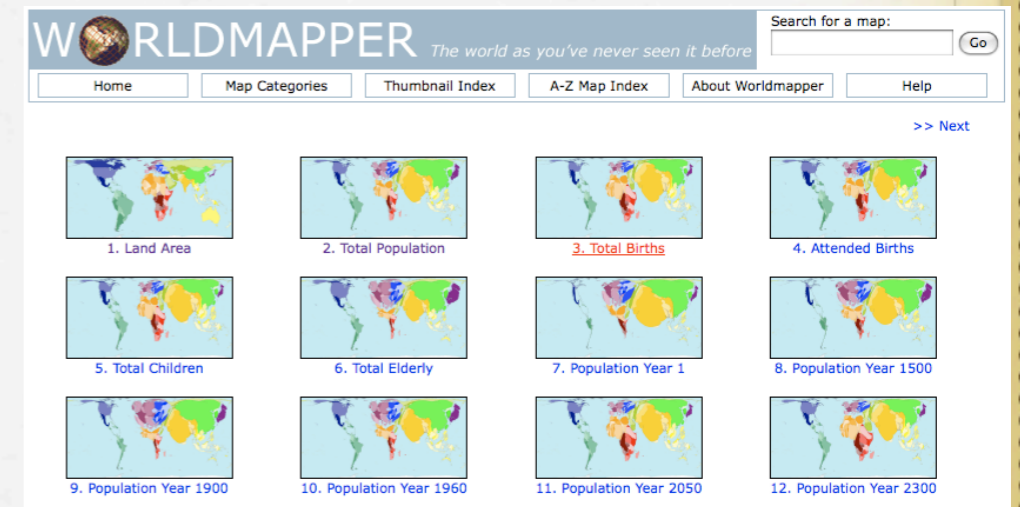
❁ National Atlas
(<http://www.nationalatlas.gov/>)



What you can do in the National Atlas of the United States®	
Customize your own map for printing or viewing.	Map Maker
Investigate the layers that you can mix and match when making your own map.	Map Layers
Print pre-formatted maps on a variety of topics.	Printable Maps
Order larger maps suitable for the wall of your office, home, or classroom.	Wall Maps
Play with interactive maps.	Dynamic Maps
Learn about topics that interest you.	Articles
Download documented, accurate, reliable, and integrated data to use in your GIS application.	Mapping Professionals

WORLD DATA

✿ World Mapper
<http://www.worldmapper.org/>



✿ United Nations Environmental Programme
<http://geodata.grid.unep.ch/>

✿ Global Map
<http://www.globalmap.org/english/>

COOL TOOLS ONLINE

❖ Google Spreadsheets
<http://docs.google.com>

❖ BatchGeocode
<http://batchgeocode.com>

❖ ArcWeb Explorer
<http://www.arcwebservices.com/awx/>

❖ DNR Garmin
<http://www.dnr.state.mn.us/mis/gis/tools/arcview/extensions/DNRGarmin/DNRGarmin.html>

❖ Finding Lat/Long
(Maporama, Google Maps, ESRI Ed Geocode)



OTHER RESOURCES

- ✿ EdGIS ListServ (This is a MUST for the GIS educator)

<https://list.terc.edu/mailman/listinfo/edgis>

- ✿ GeoTools for Spatial Analysis in ArcLessons (12 page PDF)

<http://edcommunity.esri.com/arclessons/lesson.cfm?id=305>

- ✿ Missouri Geospatial Extension Website

<http://geospatial.missouri.edu>

MAP@SYST

- ✿ eXtension Map@Syst website

http://www.extension.org/pages/Map@Syst_Community_Page

CONTACT ME

ShannonW@missouri.edu

<http://geospatial.missouri.edu>

<http://delicious.com/shwhite>

Skype: shwhitenc

