

# McGee Creek 125k

118°52'0"W 118°50'0"W 118°48'0"W 118°46'0"W 118°44'0"W

37°38'0"N

37°38'0"N

37°36'0"N

37°36'0"N

37°34'0"N

37°34'0"N

37°32'0"N

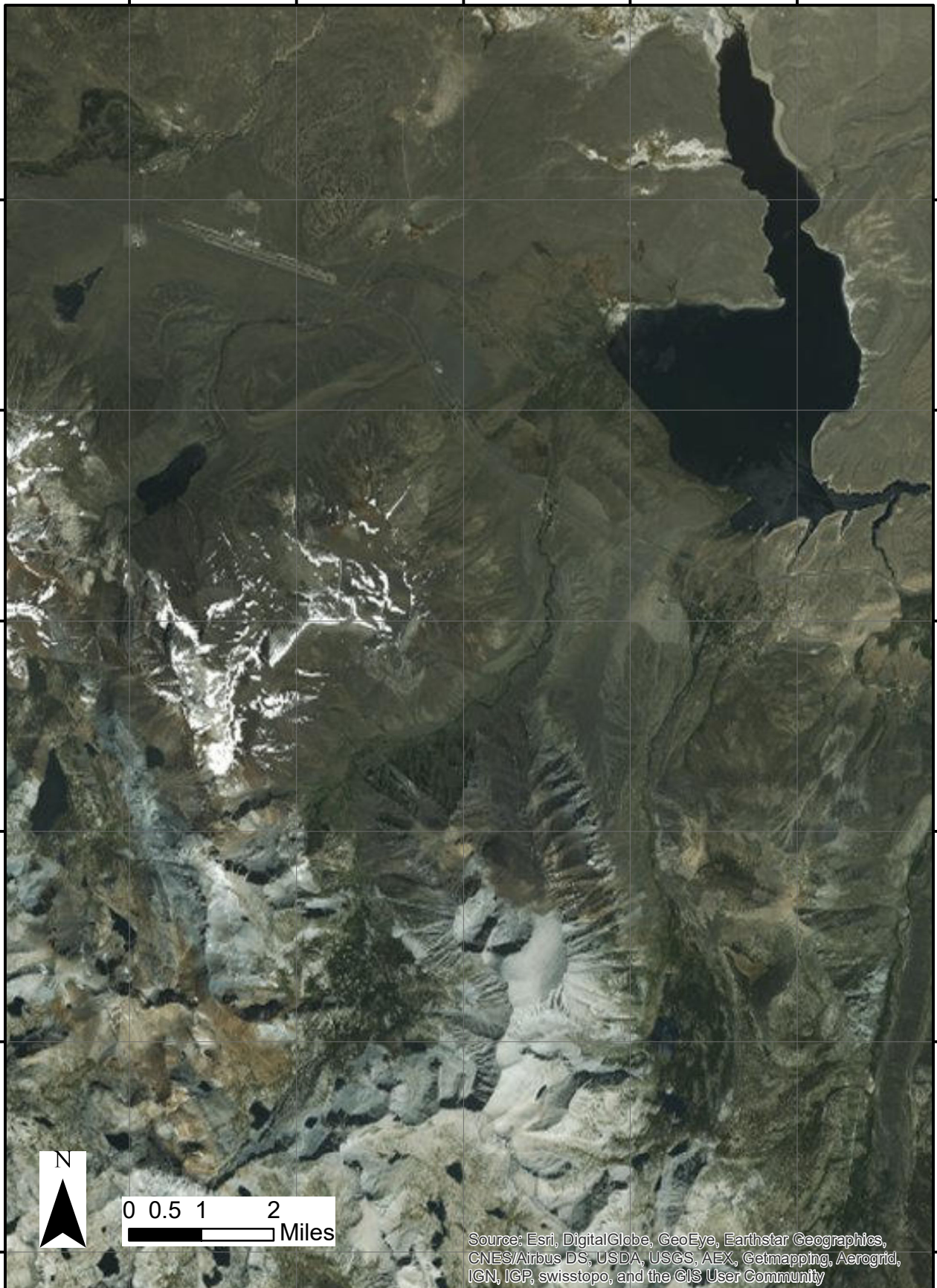
37°32'0"N

37°30'0"N

37°30'0"N

37°28'0"N

37°28'0"N



0 0.5 1 2  
Miles

Source: Esri, DigitalGlobe, GeoEye, Earthstar Geographics, CNES/Airbus DS, USDA, USGS, AEX, Getmapping, Aerogrid, IGN, IGP, swisstopo, and the GIS User Community

118°52'0"W 118°50'0"W 118°48'0"W 118°46'0"W 118°44'0"W

# McGee Creek 125k Topographic Map

118°52'0"W 118°50'0"W 118°48'0"W 118°46'0"W 118°44'0"W

37°38'0"N

37°38'0"N

37°36'0"N

37°36'0"N

37°34'0"N

37°34'0"N

37°32'0"N

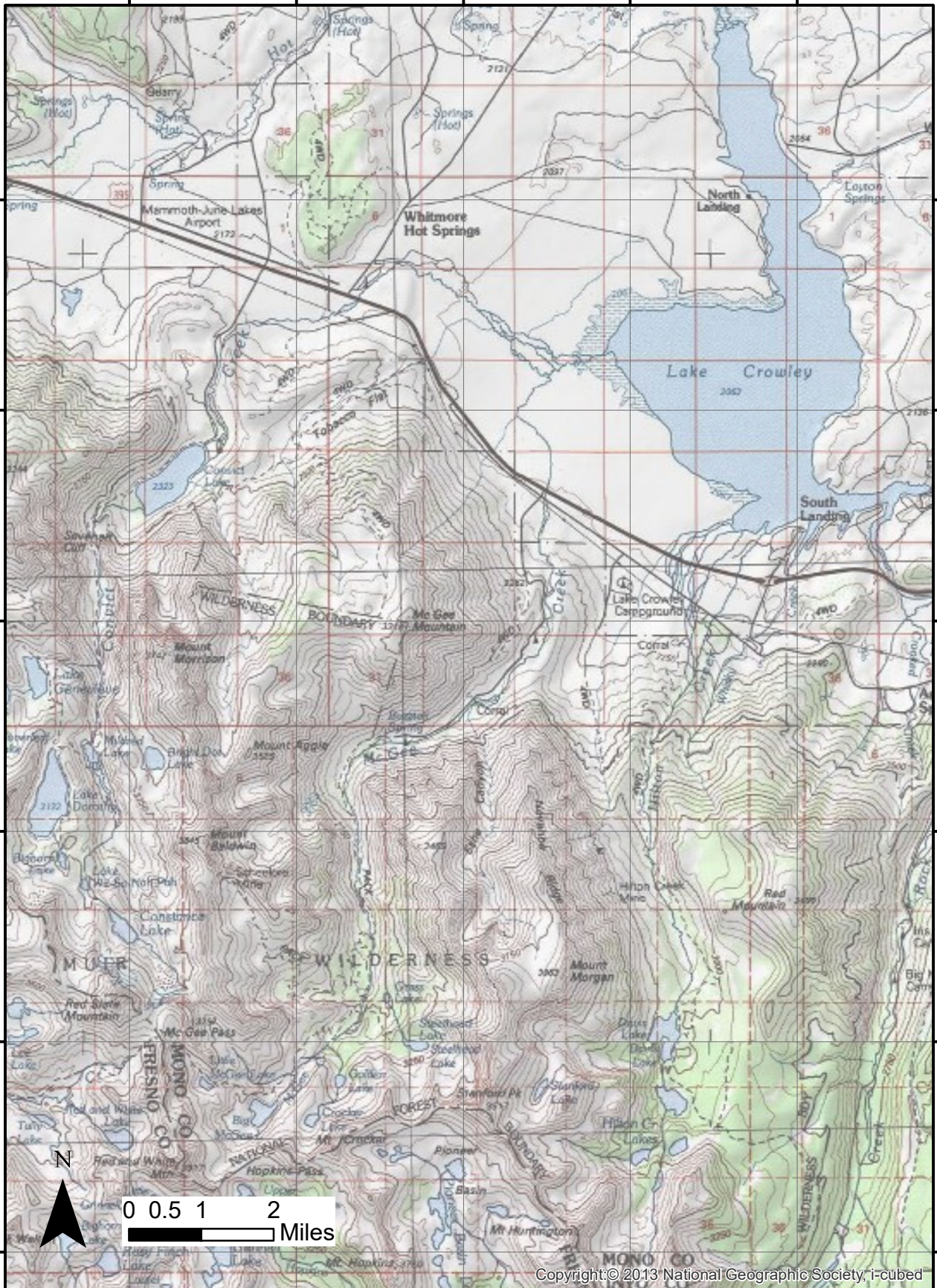
37°32'0"N

37°30'0"N

37°30'0"N

37°28'0"N

37°28'0"N



Copyright © 2013 National Geographic Society, i-cubed

118°52'0"W 118°50'0"W 118°48'0"W 118°46'0"W 118°44'0"W

# McGee Creek 80k

118°52'0"W      118°50'0"W      118°48'0"W      118°46'0"W

37°36'0"N

37°36'0"N

37°34'0"N

37°34'0"N

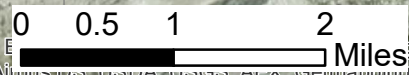
37°32'0"N

37°32'0"N

37°30'0"N

37°30'0"N

118°52'0"W      118°50'0"W      118°48'0"W      118°46'0"W



Source: ESRI, DeLorme, GeoEye, , CNES/Airbus DS, USDA, USGS, AeroGRID, IGN, IGP, swisstopo, and the GIS User Community



# McGee Creek 80k Topographic Map

118°52'0"W      118°50'0"W      118°48'0"W      118°46'0"W

37°36'0"N

37°36'0"N

37°34'0"N

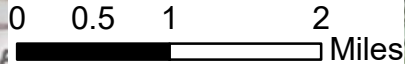
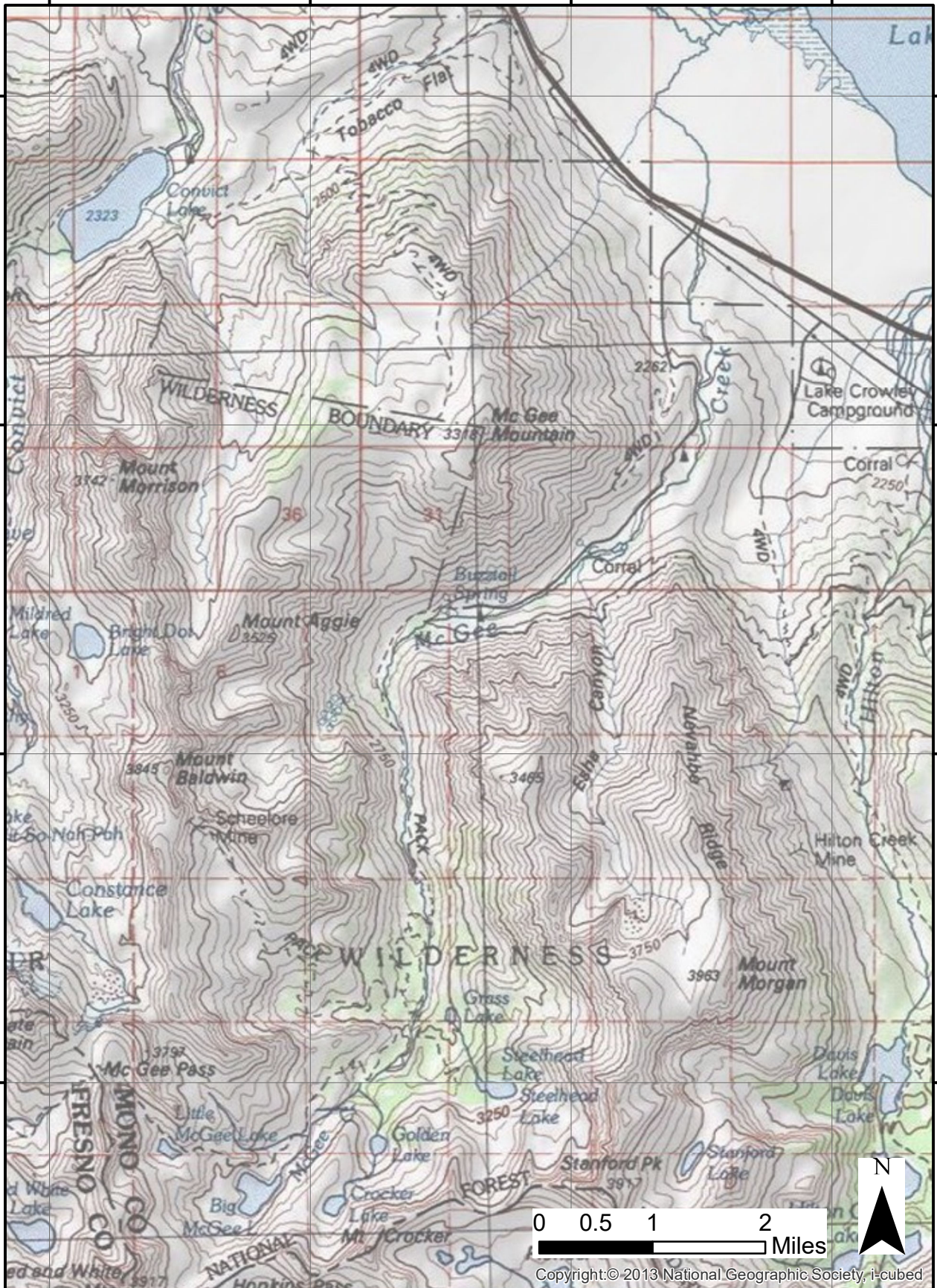
37°34'0"N

37°32'0"N

37°32'0"N

37°30'0"N

37°30'0"N



Copyright © 2013 National Geographic Society, i-cubed

118°52'0"W      118°50'0"W      118°48'0"W      118°46'0"W

# McGee Creek 50k

118°48'0"W

118°46'0"W



37°34'0"N

37°34'0"N

37°32'0"N

37°32'0"N

0 0.5 1 2 Miles

Source: Esri, DigitalGlobe, GeoEye, Earthstar Geographics, CNES/Airbus DS, USDA, USGS, AEX, Getmapping, Aerogrid, IGN, IGP, swisstopo, and the GIS User Community

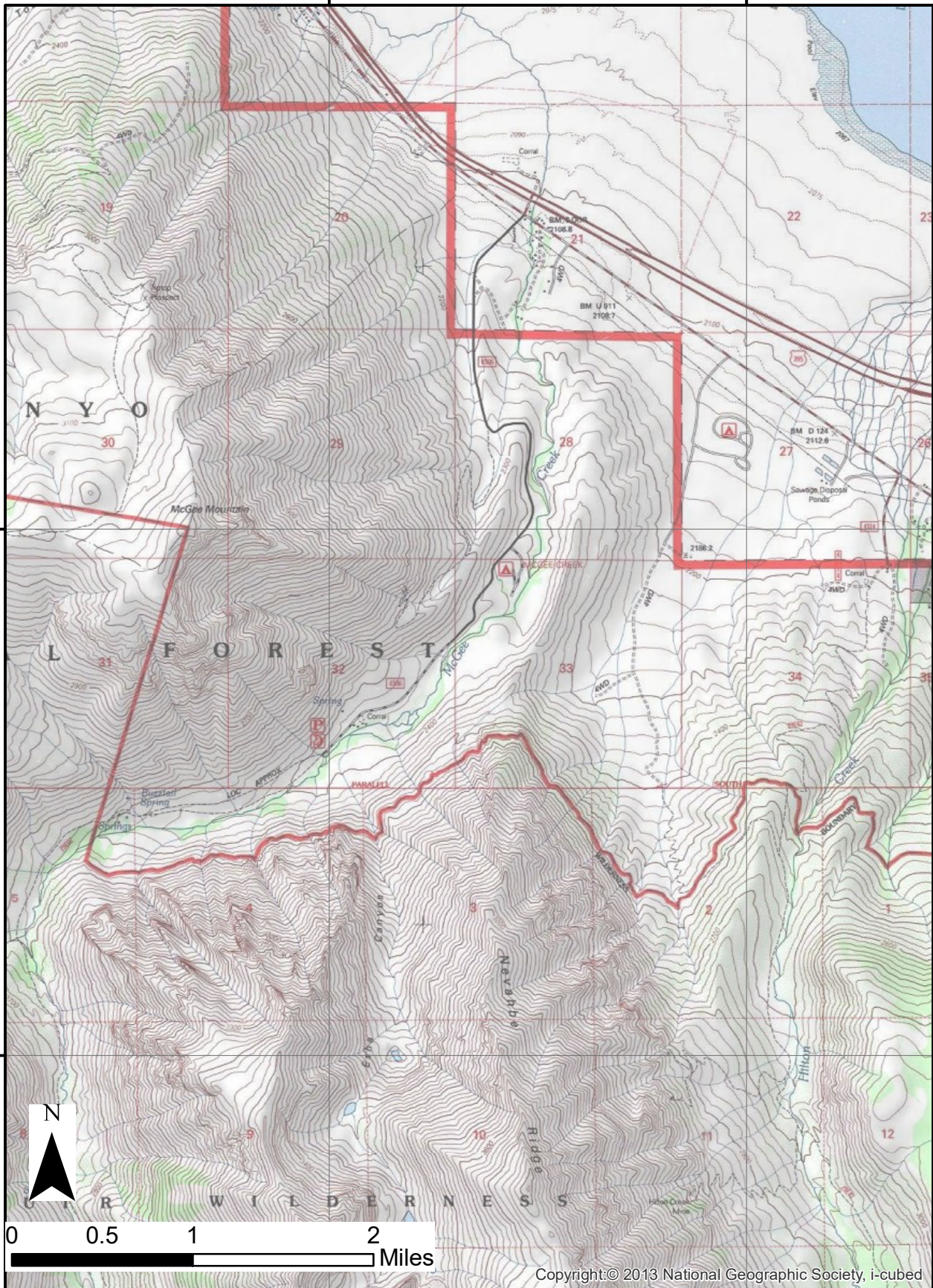
118°48'0"W

118°46'0"W

# McGee Creek 50k Topographic Map

118°48'0"W

118°46'0"W



37°34'0"N

37°34'0"N

37°32'0"N

37°32'0"N

0 0.5 1 2 Miles

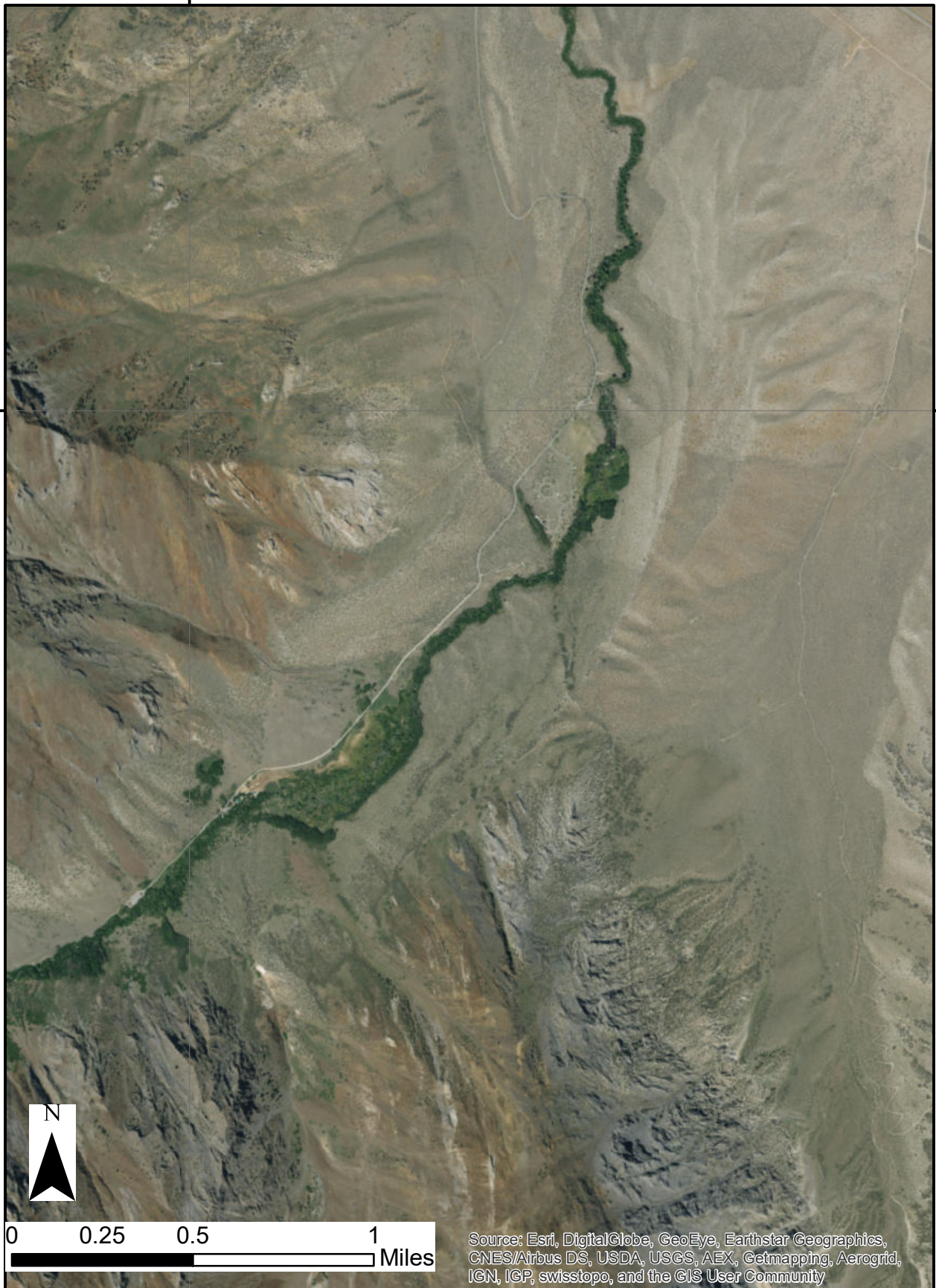
Copyright © 2013 National Geographic Society, i-cubed

118°48'0"W

118°46'0"W

# McGee Creek 25k

118°48'0"W



37°34'0"N

37°34'0"N

0 0.25 0.5 1 Miles

Source: Esri, DigitalGlobe, GeoEye, Earthstar Geographics, CNES/Airbus DS, USDA, USGS, AEX, Getmapping, Aerogrid, IGN, IGP, swisstopo, and the GIS User Community

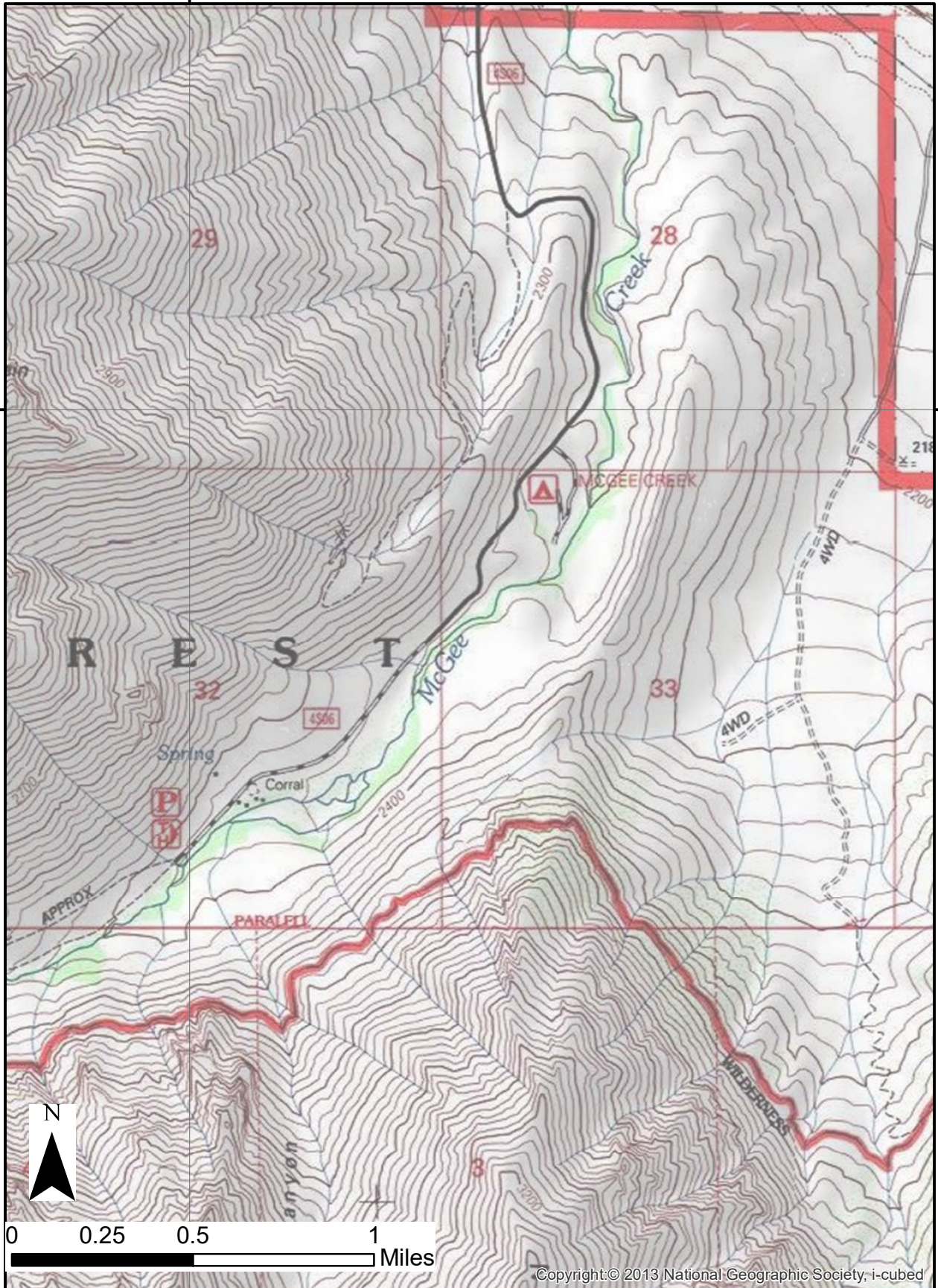
118°48'0"W

# McGee Creek 25k Topographic Map

118°48'0"W

37°34'0"N

37°34'0"N



Copyright © 2013 National Geographic Society, i-cubed

118°48'0"W