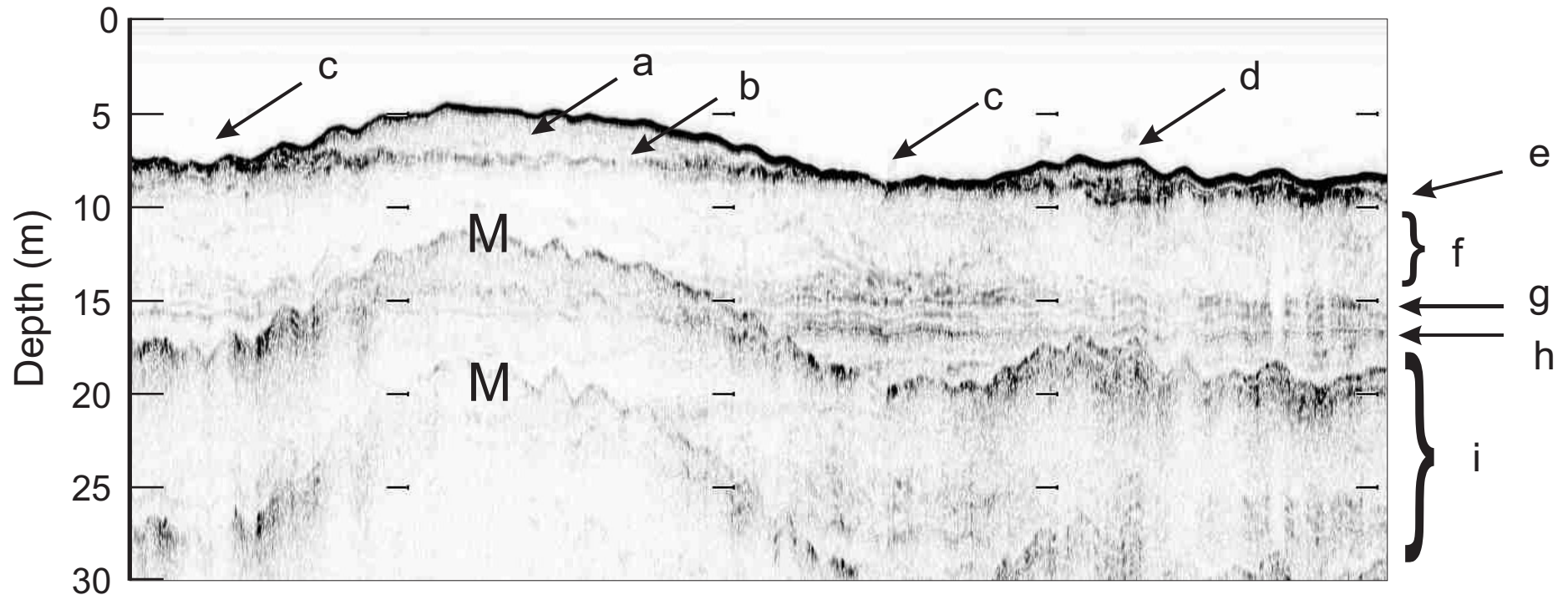


Interpreted stratigraphic section from AI-04.01



Interpretation

- a shoal, ~4 m thick
- b ravinement surface
- c ravinement exposed on seafloor
- d small shoal or sand wave, ~1.5 m thick
- e missing from section: overwash sheet, removed by ravinement

- f back-barrier muddy sand
- g base of unit f
- g-h lagoon silt between surfaces g & h
- h base of Holocene sequence
- i Pleistocene section

M multiples (of seafloor reflection)