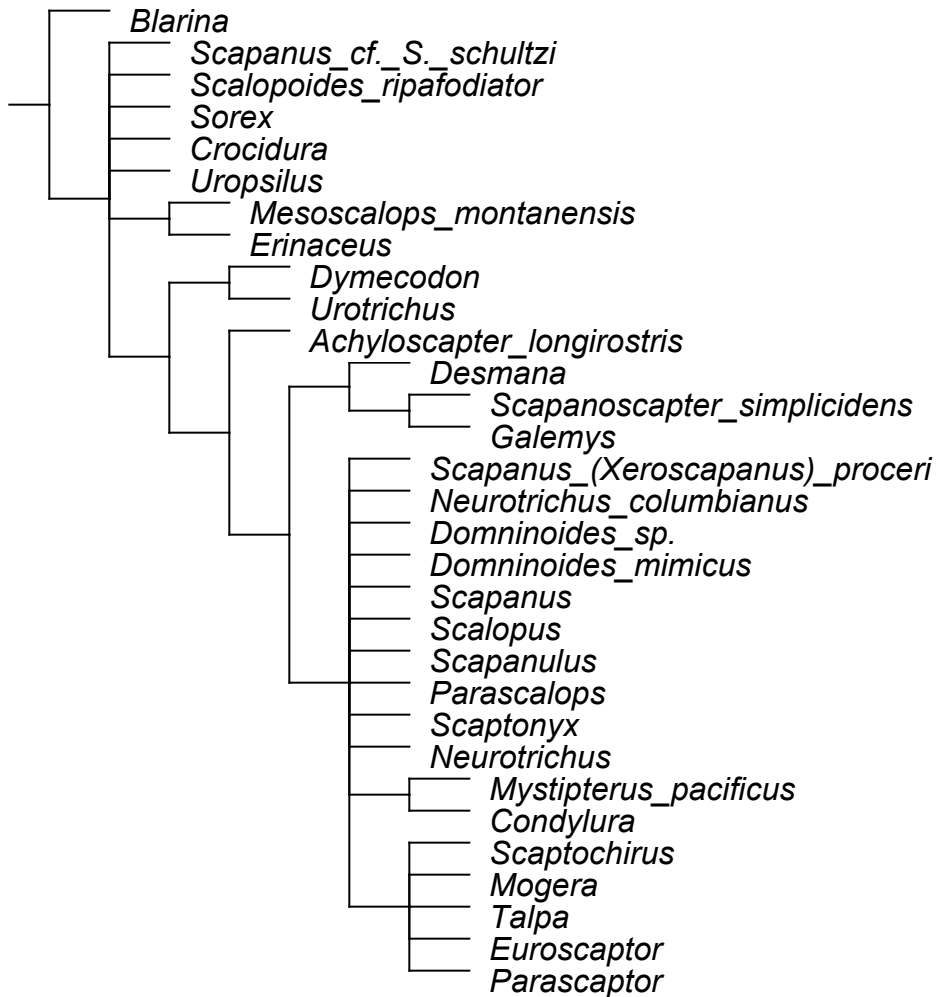


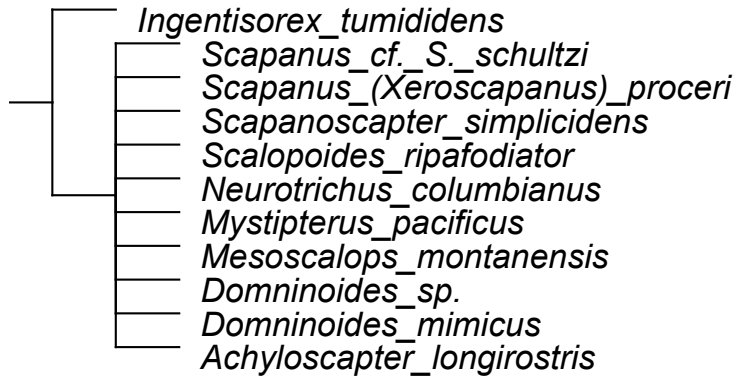
All taxa and characters included

Strict consensus of 116 trees (0 taxa excluded)

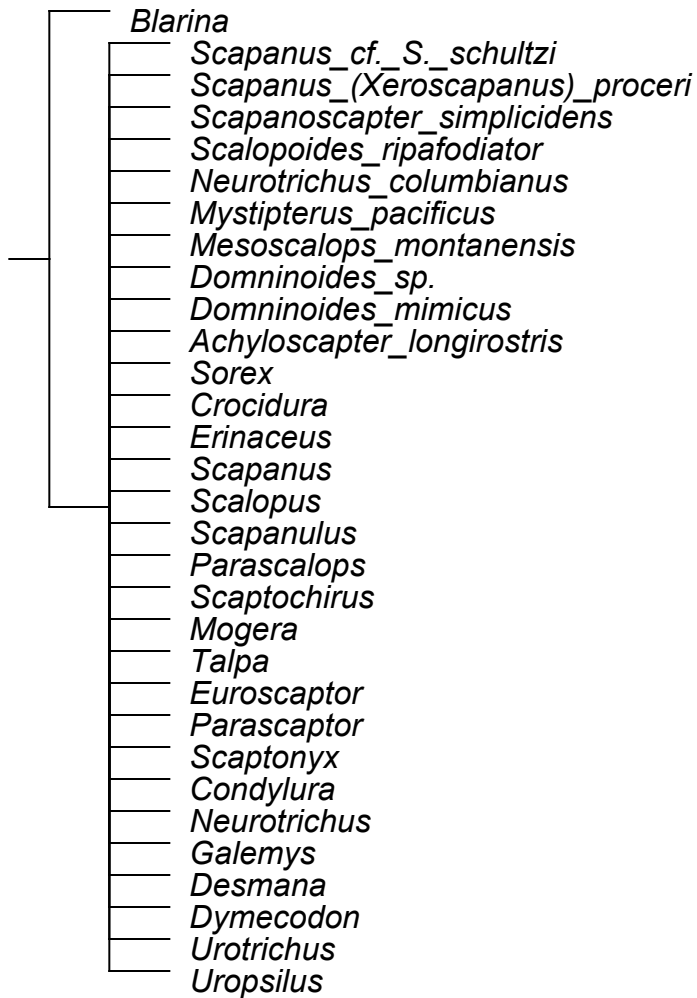


Fossil taxa only, all characters

Strict consensus of 4 trees (0 taxa excluded)

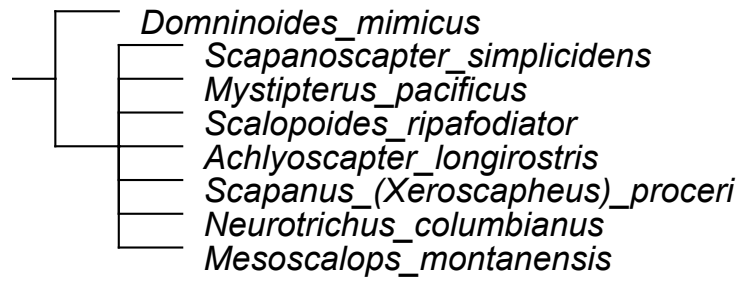


Strict consensus of 8600 trees (0 taxa excluded)



All taxa, but only a single character subset, in this case only characters of the lower teeth. All other character subsets yielded the same result, but with differing numbers of trees.

Strict consensus of 4 trees (0 taxa excluded)



Analysis from a single student group's dataset, fossil taxa only and, in this case, only skull and jaw characters