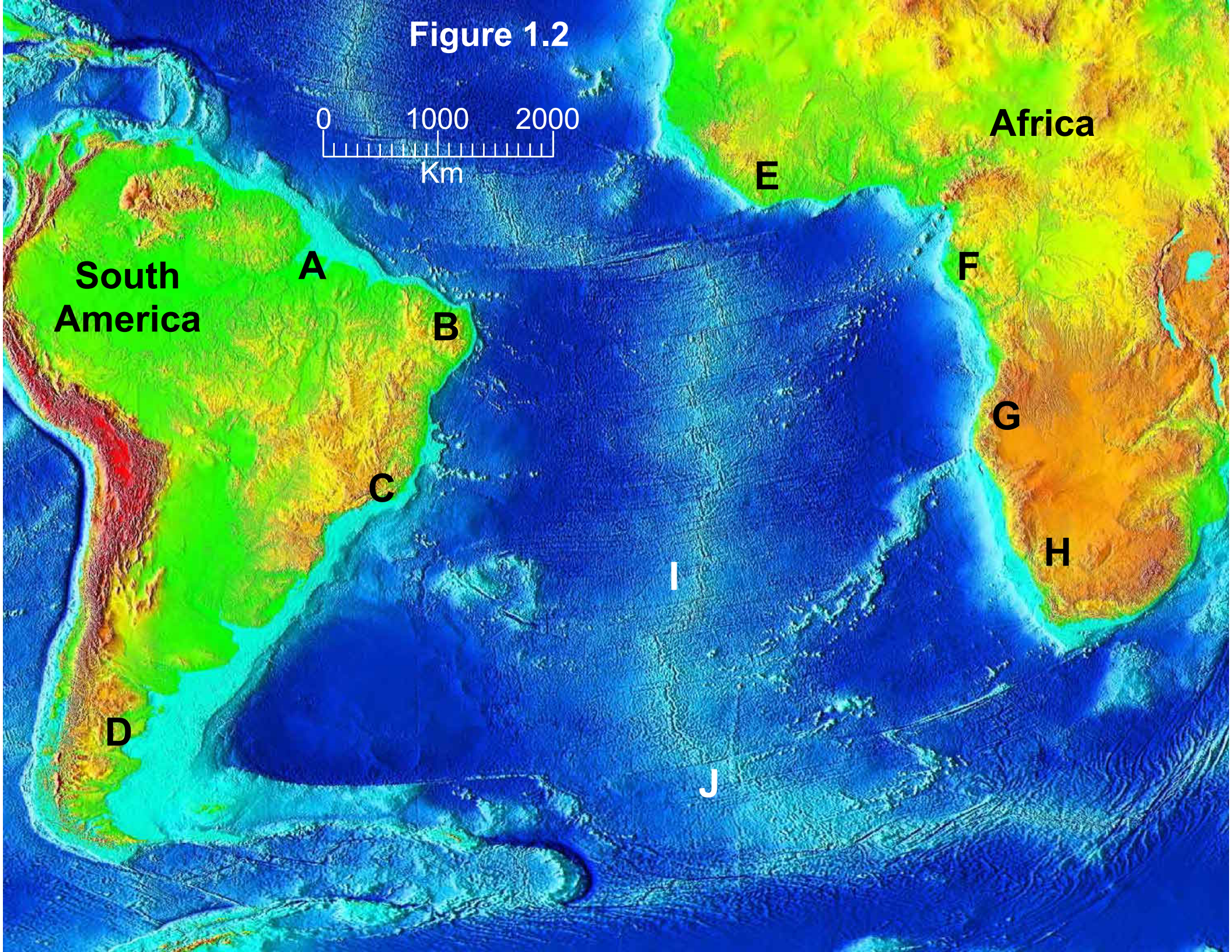


Figure 1.2



Seafloor Age

- 0-10 Ma
- 10-20 Ma
- 20-30 Ma
- 30-40 Ma
- 40-50 Ma
- 50-60 Ma
- 60-70 Ma
- 70-80 Ma
- 80-90 Ma
- 90-100 Ma
- 100-110 Ma
- 110-120 Ma
- 120-130 Ma
- 130-140 Ma
- 140-150 Ma
- 150-160 Ma
- 160-170 Ma
- 170-180 Ma

South America

Mid-Atlantic Ridge

Africa

Next image

Data SIO, NOAA, U.S. Navy, NGA, GEBCO
Image Landsat / Copernicus

Google Earth

Imagery Date: 12/13/2015 25°50'19.81" S 20°55'35.84" W elev -15193 ft eye alt 4658.77 mi

Deep Sea Drilling Program Sites

Seafloor Age

- 0-10 Ma
- 10-20 Ma
- 20-30 Ma
- 30-40 Ma
- 40-50 Ma
- 50-60 Ma
- 60-70 Ma
- 70-80 Ma
- 80-90 Ma
- 90-100 Ma
- 100-110 Ma
- 110-120 Ma
- 120-130 Ma
- 130-140 Ma
- 140-150 Ma
- 150-160 Ma
- 160-170 Ma
- 170-180 Ma

Mid-Atlantic Ridge

Site 21

Site 20

Site 19

Site 14

Site 15

Site 16

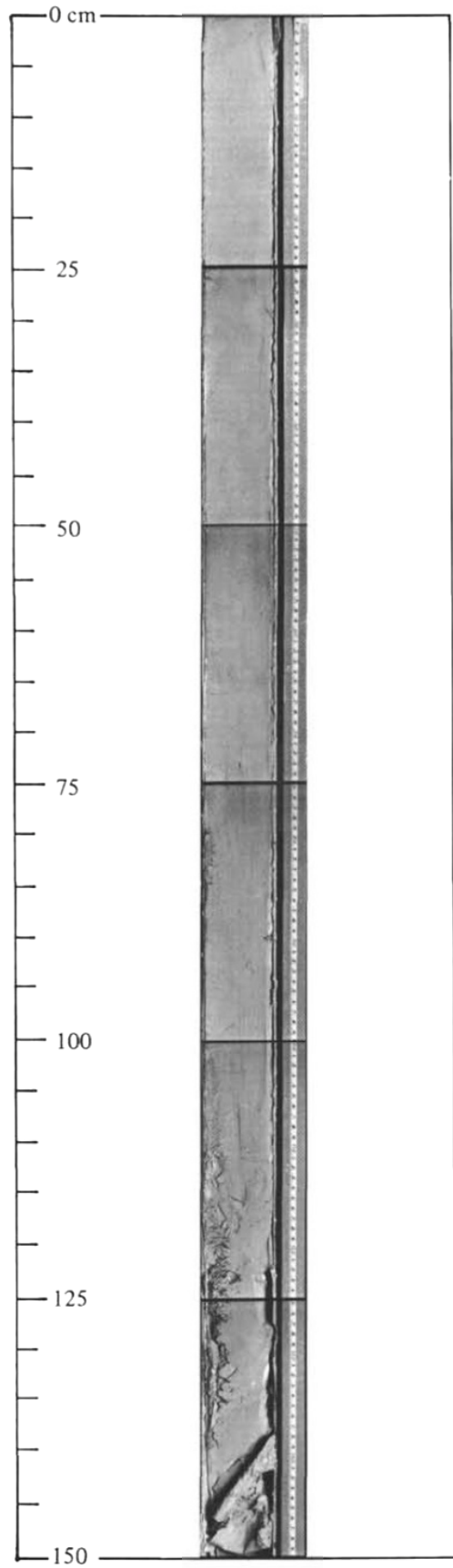
Data SIO, NOAA, U.S. Navy, NGA, GEBCO

Google Earth

Deep Sea Drilling Project
Leg 3
Site 14
Core 3

Paleontological age =
38 Ma (million years)

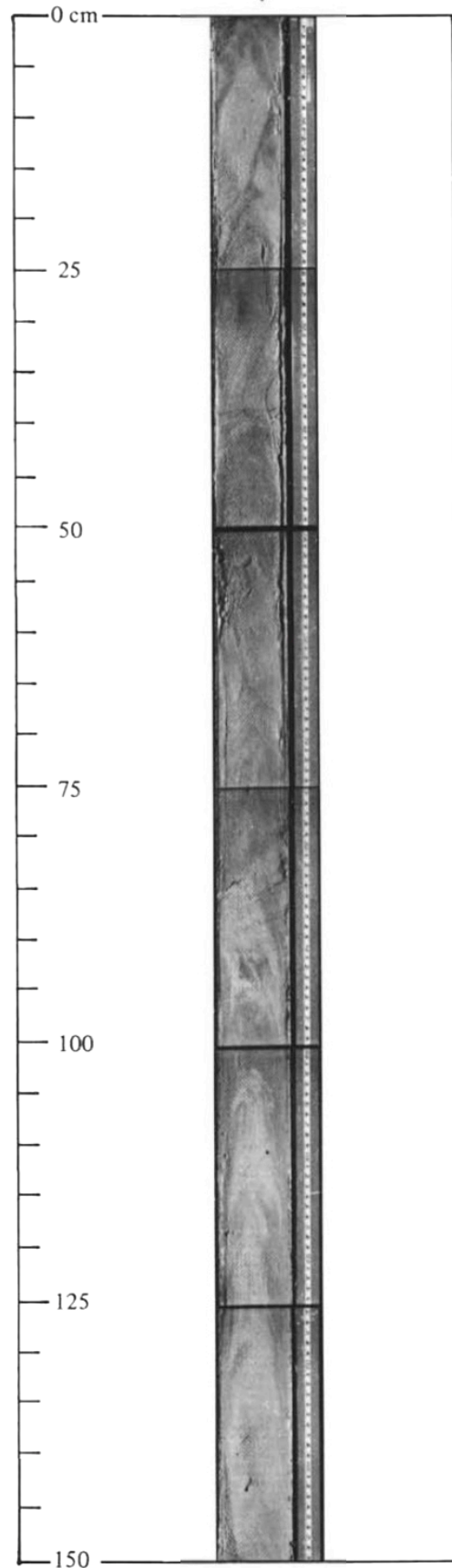
Distance west of the Mid-
Atlantic Ridge = 745 km



Deep Sea Drilling Project
Leg 3
Site 15
Core 1

Paleontological age =
24 Ma (million years)

Distance west of the Mid-
Atlantic Ridge = 422 km

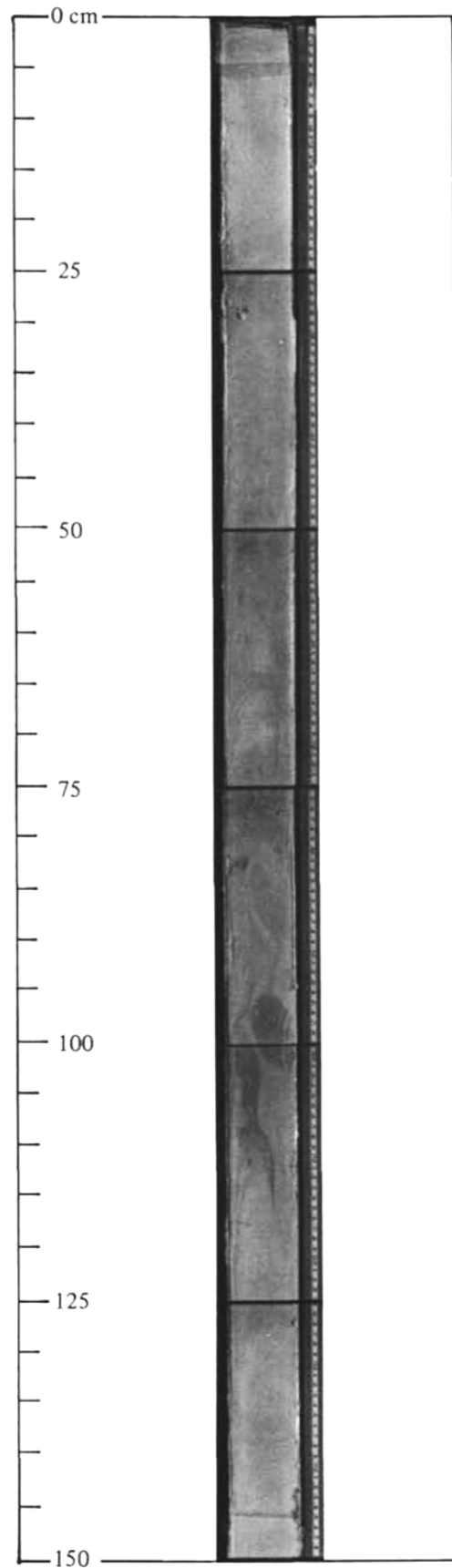


http://www.deepseadrilling.org/03/dsdp_toc.htm
Chapter 5, p. 126

Deep Sea Drilling Project
Leg 3
Site 16
Core 2

Paleontological age =
11 Ma (million years)

Distance west of the Mid-
Atlantic Ridge = 221 km

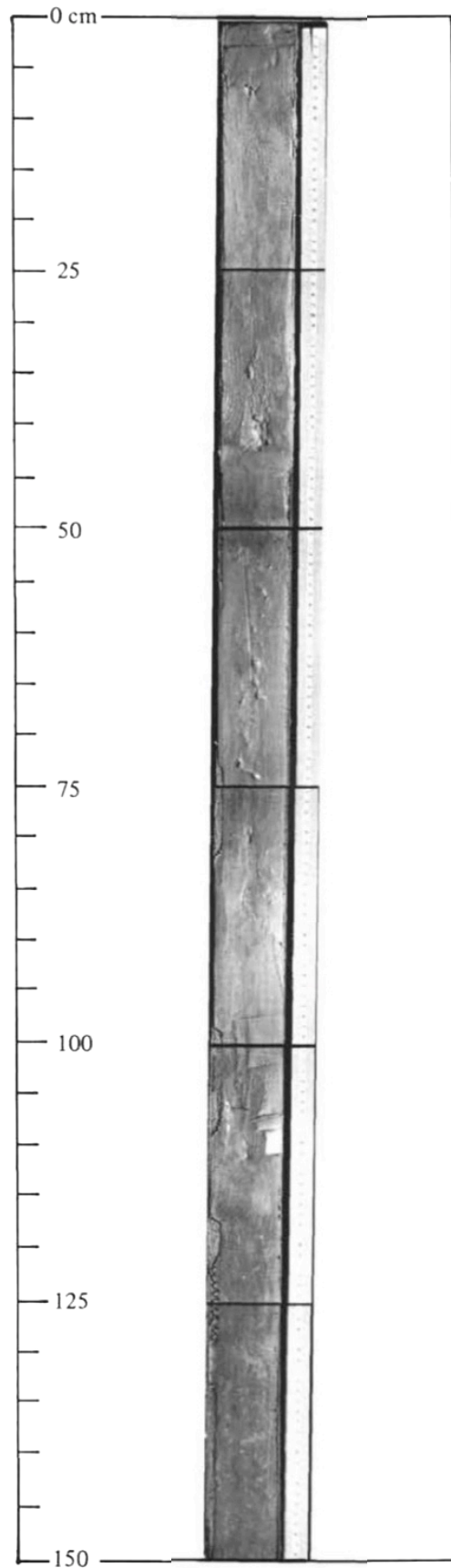


http://www.deepseadrilling.org/03/dsdp_toc.htm
Chapter 6, p. 169

Deep Sea Drilling Project
Leg 3
Site 19
Core 3

Paleontological age =
49 Ma (million years)

Distance west of the Mid-
Atlantic Ridge = 1010 km

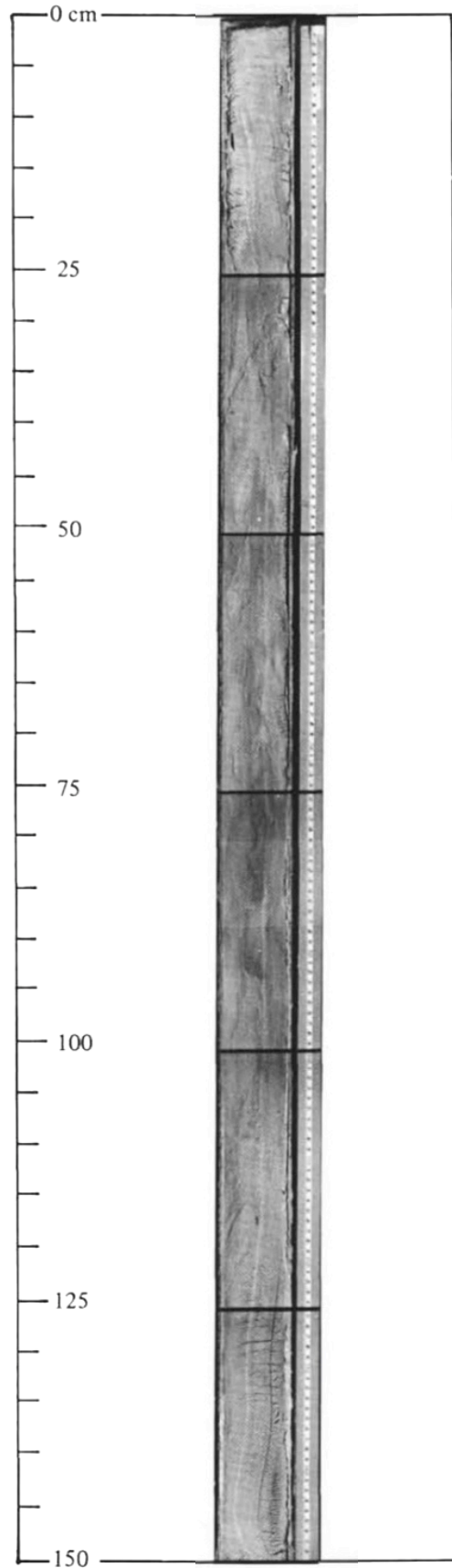


http://www.deepseadrilling.org/03/dsdp_toc.htm
Chapter 9, p. 294

Deep Sea Drilling Project
Leg 3
Site 20
Core 2

Paleontological age =
67 Ma (million years)

Distance west of the Mid-
Atlantic Ridge = 1303 km



http://www.deepseadrilling.org/03/dsdp_toc.htm
Chapter 10, p. 340

Deep Sea Drilling Project
Leg 3
Site 21
Core 1

Paleontological age =
76 Ma (million years)

Distance west of the Mid-
Atlantic Ridge = 1686 km

http://www.deepseadrilling.org/03/dsdp_toc.htm
Chapter 11, p. 384

